



NW/c of Kellogg & Tyler

Wichita, Kansas

Property Features

- Space available:
 - Building 1: 1,900 SF
- Total site area of 74,488 SF (1.71 Acres)
- Area users include: Sticky Bird Red Barn Farms Chicken, Subway, Holland Paving, Vrana Chiropractic, Papa John's, Home Depot, Edward Jones, Mr. Goodcents, MidAmerican Credit Union, Vanderbilt's and Bombardier Learjet
- Zoned General Commercial
- Located within a high concentration of retail and restaurant users
- Excellent access and visibility to Kellogg (US Hwy 54) and I-235
- Traffic count: 57,500 VPD on Kellogg & Tyler
- Lease rate: \$19.00/SF NNN

Demographics

	1 Mile	5 Miles	10 Miles
Total Households	1,382	45,868	127,166
Total Population	3,180	115,731	320,120
Average HH Income	\$62,562	\$69,198	\$57,007

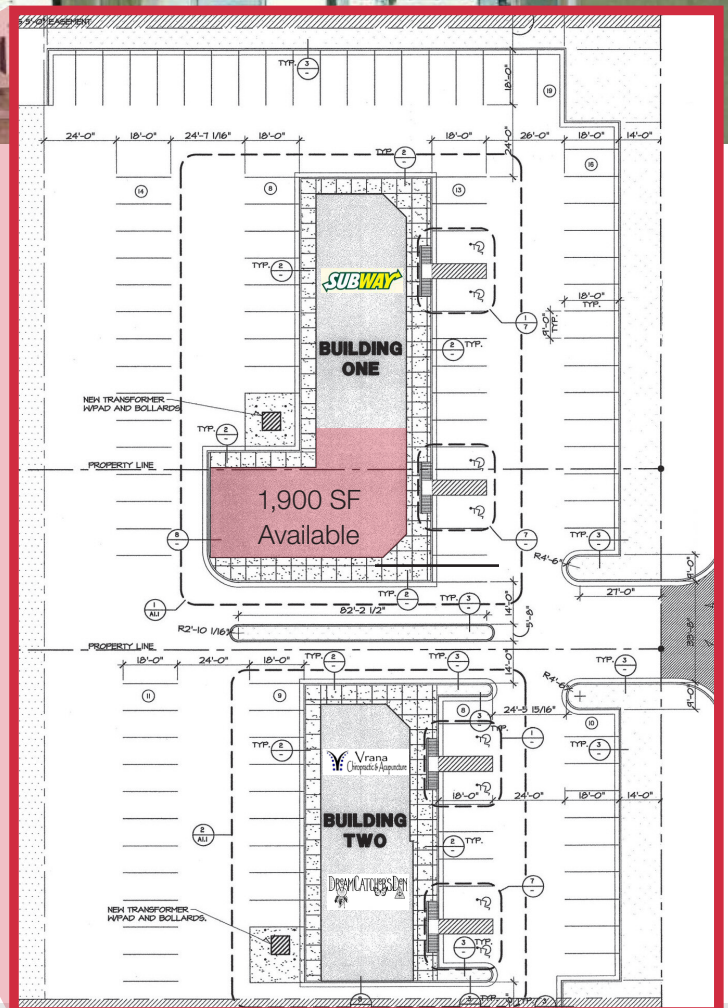
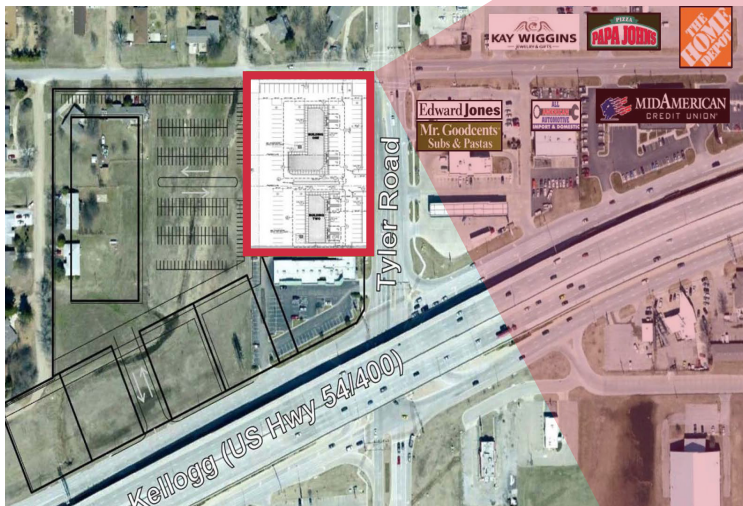
For more information:

Troy Farha

316.847.4904 • tfarha@naimartens.com

For Lease
NW Wichita
Retail Center
Wichita, Kansas

NAIMartens



For more information:

Troy Farha

316.847.4904 • tfarha@naimartens.com

NAI Martens
1330 E. Douglas
Wichita, KS 67214
316.262.0000

NAIMartens.com

Independently Owned and Operated. The information contained herein was obtained from sources believed reliable; however, NAI Martens Company makes no guarantees, warranties or representations as to the completeness or accuracy thereof. The presentation of this property is submitted subject to errors, omissions, change of price or conditions prior to sale or lease, or withdrawal without notice.