

**OFFICE FOR LEASE**  
**3320 N. MILWAUKEE ST.**  
Boise, ID 83704



**LISTING DATA**

**AVAILABLE SF:** +/- 5,000 SF  
**LEASE RATE:** \$12.50 - \$16.00 SF/yr  
(FSEJ)

**PROPERTY INFORMATION**

**COUNTY:** Ada  
**MARKET:** Boise City / Nampa  
**SUBMARKET:** West Boise

**BUILDING DATA**

**TOTAL BUILDING SF:** 5,888 SF  
**ZONING:** R-1C

**DRIVING TIMES**

**DOWNTOWN BOISE:** 12 minutes  
**MERIDIAN:** 16 minutes  
**EAGLE:** 16 minutes  
**NAMPA:** 25 minutes  
**CALDWELL:** 31 minutes



**PROPERTY OVERVIEW**

Lee & Associates is pleased to present this centrally located office building For Lease. Close to prime Boise shopping and freeway access with good parking. Recently remodeled interior features a practical, open floor plan and attractive finishes. Exterior is contemporary with mature landscaping. Tenant improvements available. Suites may be combined.

Mike Vance | Associate  
mikev@leeidaho.com  
C 208.871.0636

Chase Erkins | Principal  
chasee@leeidaho.com  
C 208.789.4900

All information furnished regarding property for sale, rental or financing is from sources deemed reliable, but no warranty or representation is made to the accuracy thereof and same is submitted to errors, omissions, change of price, rental or other conditions prior to sale, lease or financing or withdrawal without notice.  
No liability of any kind is to be imposed on the broker herein.



**OFFICE FOR LEASE**  
**3320 N. MILWAUKEE ST.**  
Boise, ID 83704

**LEE & ASSOCIATES**  
COMMERCIAL REAL ESTATE SERVICES  
LEE & ASSOCIATES IDAHO, LLC

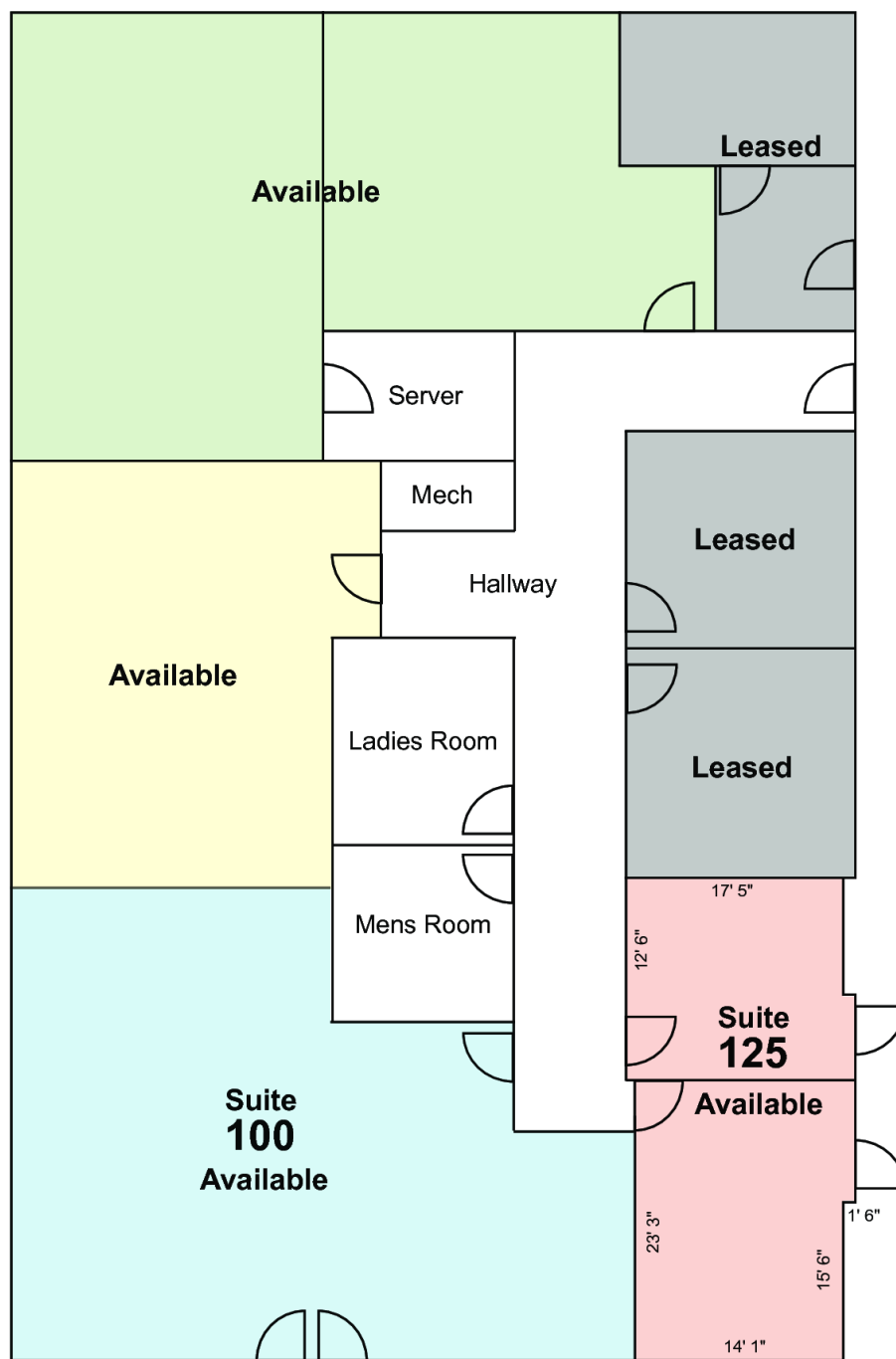


Mike Vance | Associate  
mikev@leeidaho.com  
C 208.871.0636

Chase Erkins | Principal  
chasee@leeidaho.com  
C 208.789.4900

All information furnished regarding property for sale, rental or financing is from sources deemed reliable, but no warranty or representation is made to the accuracy thereof and same is submitted to errors, omissions, change of price, rental or other conditions prior to sale, lease or financing or withdrawal without notice.  
No liability of any kind is to be imposed on the broker herein.

OFFICE FOR LEASE  
**3320 N. MILWAUKEE ST.**  
Boise, ID 83704



\* Floorplan not to scale

Mike Vance | Associate  
mikev@leeidaho.com  
C 208.871.0636

Chase Erkins | Principal  
chasee@leeidaho.com  
C 208.789.4900

All information furnished regarding property for sale, rental or financing is from sources deemed reliable, but no warranty or representation is made to the accuracy thereof and same is submitted to errors, omissions, change of price, rental or other conditions prior to sale, lease or financing or withdrawal without notice.  
No liability of any kind is to be imposed on the broker herein.



OFFICE FOR LEASE  
**3320 N. MILWAUKEE ST.**  
Boise, ID 83704

**LEE & ASSOCIATES**  
COMMERCIAL REAL ESTATE SERVICES  
LEE & ASSOCIATES IDAHO, LLC



Mike Vance | Associate  
mikev@leeidaho.com  
C 208.871.0636

Chase Erkins | Principal  
chasee@leeidaho.com  
C 208.789.4900

All information furnished regarding property for sale, rental or financing is from sources deemed reliable, but no warranty or representation is made to the accuracy thereof and same is submitted to errors, omissions, change of price, rental or other conditions prior to sale, lease or financing or withdrawal without notice.  
No liability of any kind is to be imposed on the broker herein.