



HORIZON OFFICE CENTER

1815 SCHAFER ST
BISMARCK, ND 58501

CHUCK HUBER, COMMERCIAL REALTOR®

Broker Associate | Advisor
701.391.9575
chuck@thecragroup.com

FOR LEASE



HORIZON OFFICE CENTER

1815 SCHAFER ST BISMARCK, ND 58501



OFFERING SUMMARY

Lease Rate:	\$9,939.00 per month (Full Service)
Building Size:	30,015 SF
Available SF:	6,039 SF
Zoning:	CG
Tenant Responsibility:	Janitorial
Landlord Responsibility:	Utilities, taxes, insurance

PROPERTY HIGHLIGHTS

- 6,039 Rentable SF / 5,345 Usable SF
- Good views from property
- Professional setting/ building



CHUCK HUBER, COMMERCIAL REALTOR®

Broker Associate | Advisor
701.391.9575
chuck@thecragroup.com

FOR LEASE



HORIZON OFFICE CENTER

1815 SCHAFER ST BISMARCK, ND 58501



CHUCK HUBER, COMMERCIAL REALTOR®

Broker Associate | Advisor

701.391.9575

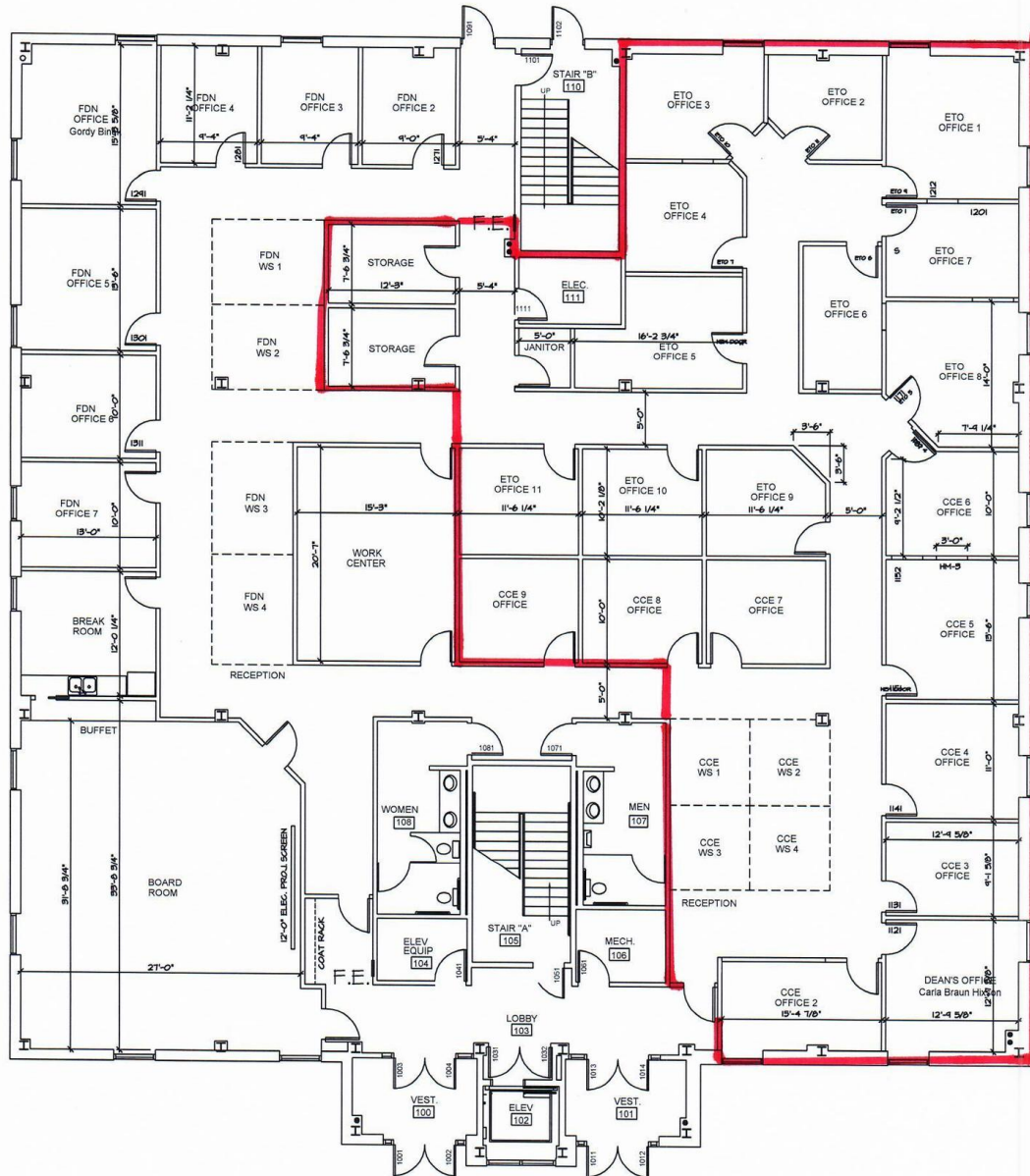
chuck@thecragroup.com

FOR LEASE



HORIZON OFFICE CENTER

1815 SCHAFER ST BISMARCK, ND 58501



FIRST FLOOR PLAN
1/8" = 1'-0"



CHUCK HUBER, COMMERCIAL REALTOR®

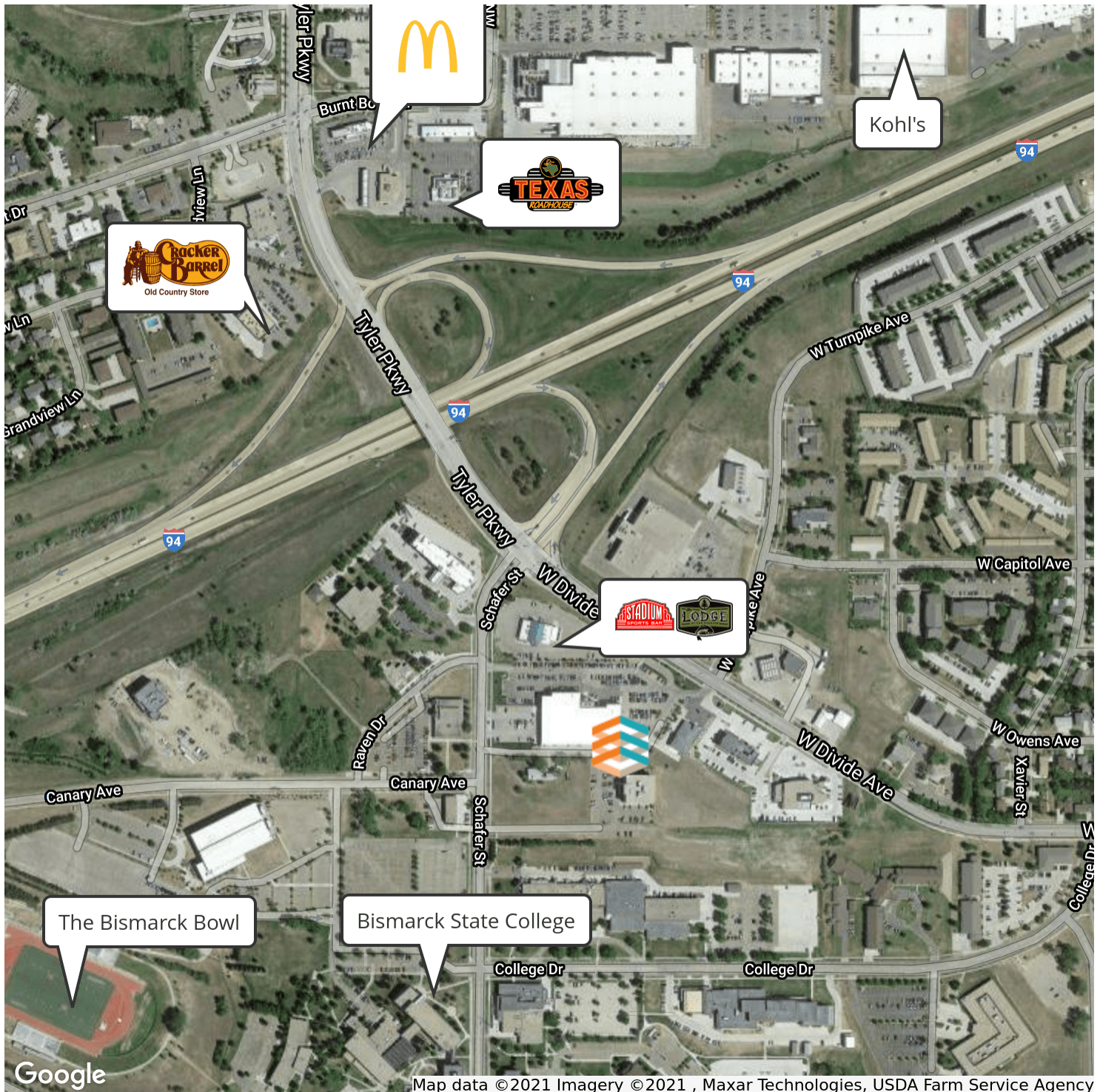
Broker Associate | Advisor
701.391.9575
chuck@thecragroup.com

FOR LEASE



HORIZON OFFICE CENTER

1815 SCHAFER ST BISMARCK, ND 58501



Map data ©2021 Imagery ©2021, Maxar Technologies, USDA Farm Service Agency



CHUCK HUBER, COMMERCIAL REALTOR®

Broker Associate | Advisor

701.391.9575

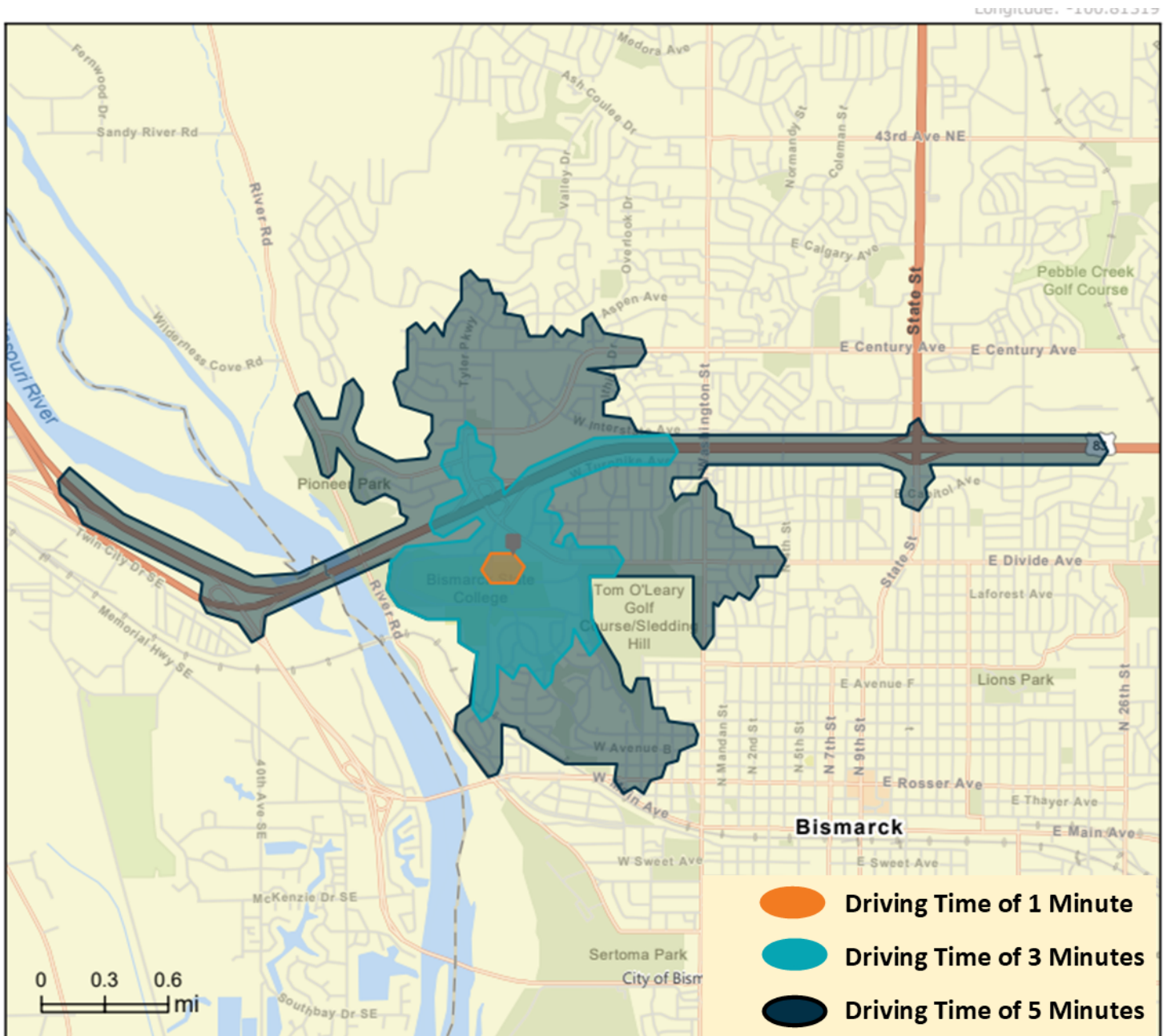
chuck@thecragroup.com

FOR LEASE



HORIZON OFFICE CENTER

1815 SCHAFER ST BISMARCK, ND 58501

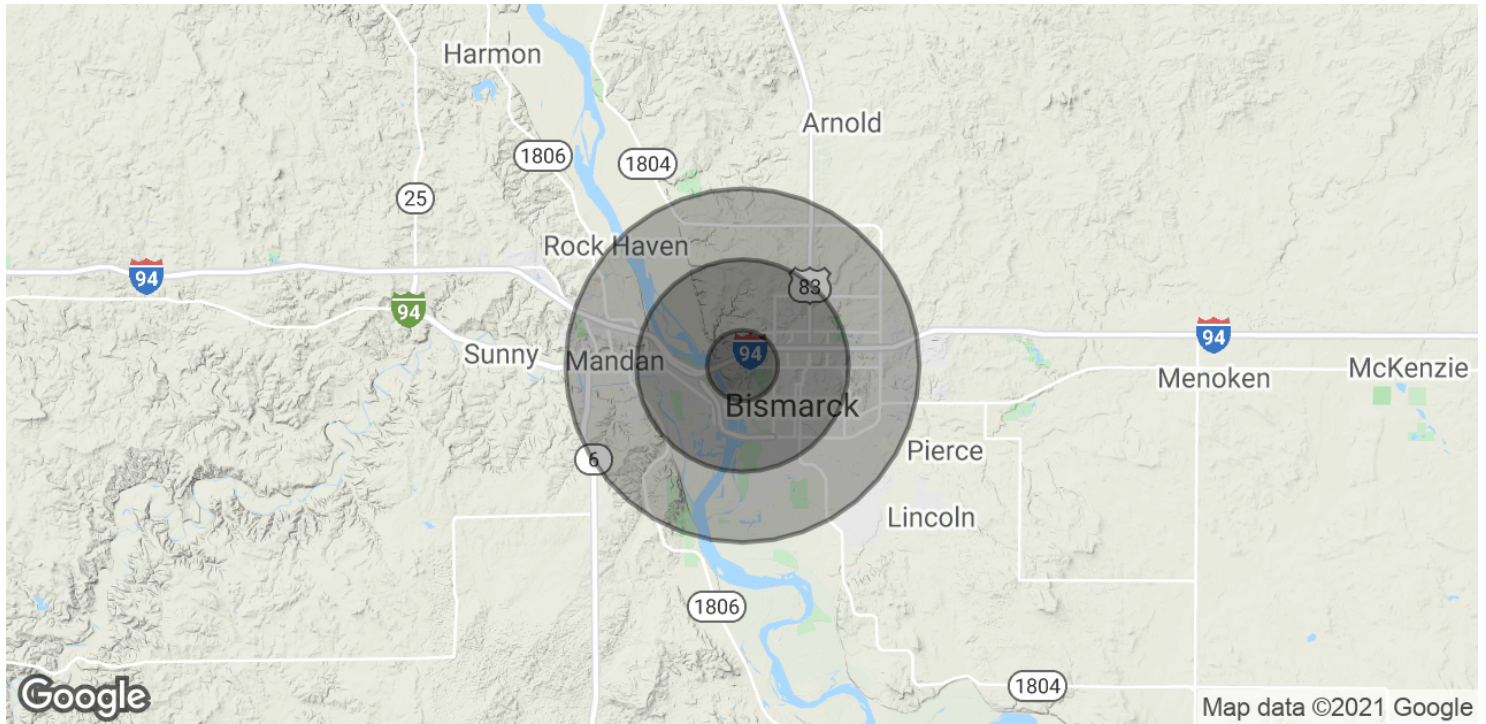


FOR LEASE



HORIZON OFFICE CENTER

1815 SCHAFER ST BISMARCK, ND 58501



POPULATION	1 MILE	3 MILES	5 MILES
Total Population	6,891	44,691	85,236
Average age	36.7	40.1	38.4
Average age (Male)	34.6	38.0	36.3
Average age (Female)	36.4	41.7	40.9
HOUSEHOLDS & INCOME	1 MILE	3 MILES	5 MILES
Total households	3,010	20,484	37,656
# of persons per HH	2.3	2.2	2.3
Average HH income	\$75,762	\$67,098	\$62,762
Average house value	\$190,014	\$164,700	\$147,510

* Demographic data derived from 2010 US Census



CHUCK HUBER, COMMERCIAL REALTOR®

Broker Associate | Advisor
701.391.9575
chuck@thecragroup.com

BUILDING RELATIONSHIPS. BUILDING THE COMMUNITY.™



**CHUCK HUBER, COMMERCIAL
REALTOR®**

Broker Associate | Advisor

701.391.9575

chuck@thecragroup.com

STAY IN TOUCH



@THECRAGROUP



@THECRAGROUP



THE CRA GROUP

THECRAGROUP.com

THE CRA GROUP | 216 N 2ND ST | BISMARCK, ND 58501

Although information has been obtained from sources deemed reliable, neither Owner nor CRA makes any guarantees, warranties, or representations, express or implied, as to the completeness or accuracy as to the information contained herein. You should conduct a careful, independent investigation of the property and verify all information. Any reliance on this information is solely at your own risk. The Property may be withdrawn without notice. Neither Owner nor CRA accepts any liability for any loss or damage suffered by any party resulting from reliance on this information. Photos, logos, and other images herein are the property of their respective owners. Use of these images without the express written consent of the owner is prohibited.