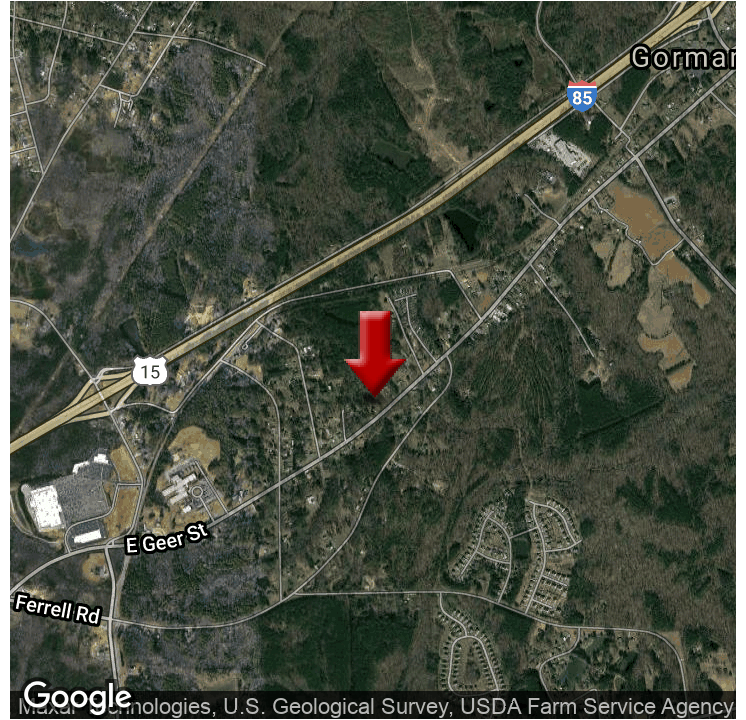
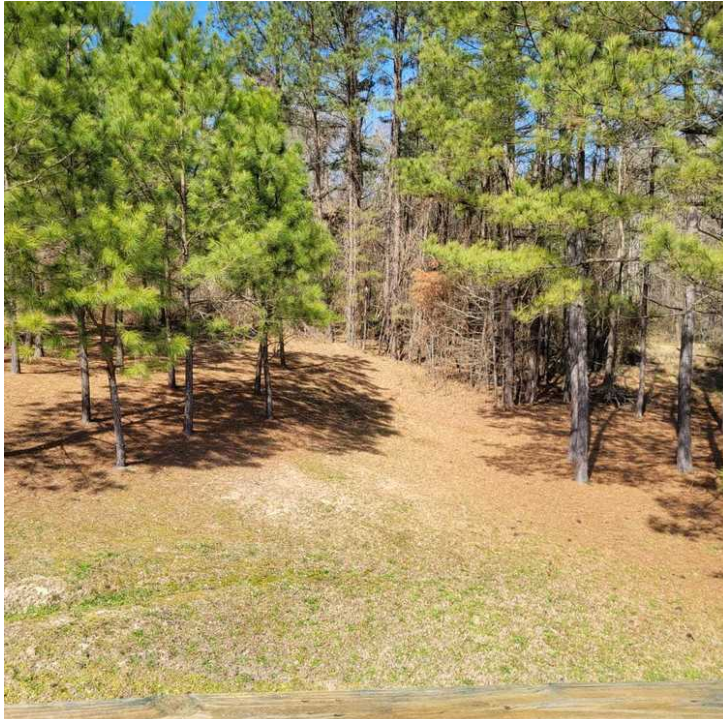


## LAND FOR SALE

± 0.5 ACRE PARCEL - MINUTES FROM DOWNTOWN DURHAM

2631 E Geer St, Durham, NC 27704



### OFFERING SUMMARY

<b>SALE PRICE:</b>	\$20,000
<b>LOT SIZE:</b>	0.43 Acres
<b>YEAR BUILT:</b>	1960
<b>ZONING:</b>	NC
<b>MARKET:</b>	Raleigh
<b>SUBMARKET:</b>	Durham
<b>PRICE / SF:</b>	\$1.08

### PROPERTY OVERVIEW

This ± 0.5 acre land parcel is just minutes from Downtown, Great location with easy access to I-85 Corridor and Downtown Durham!

### PROPERTY HIGHLIGHTS

- Easy Access to I-85 Corridor
- 10 Miles from Duke University

**KW COMMERCIAL**  
245 NC-54 Suite 101  
Durham, NC 27713

**VANDAN GANDHI, CCIM**  
Commercial Broker  
O: 919.475.5769  
van.kwcommercial@gmail.com  
NC #247850

We obtained the information above from sources we believe to be reliable. However, we have not verified its accuracy and make no guarantee, warranty or representation about it. It is submitted subject to the possibility of errors, omissions, change of price, rental or other conditions, prior sale, lease or financing, or withdrawal without notice. We include projections, opinions, assumptions or estimates for example only, and they may not represent current or future performance of the property. You and your tax and legal advisors should conduct your own investigation of the property and transaction.

Each Office Independently Owned and Operated [kwcommercial.com/commercial/index.html](http://kwcommercial.com/commercial/index.html)