



# RETAIL PROPERTY FOR LEASE

1340 W. Main St., Danville,  
VA 24541

PRESENTED BY:

**LOUISE JENNINGS**

404.606.3285

[louise@resellc.com](mailto:louise@resellc.com)



REAL ESTATE  SOUTHEAST<sub>LLC</sub>

**REAL ESTATE SOUTHEAST**

404.606.3285

P. O. Box 681955

Prattville, AL 36068

# Executive Summary

DAN RIVER PLAZA | 1340 W. MAIN ST., DANVILLE, VA 24541

REAL ESTATE  SOUTHEAST<sub>LLC</sub>



## OFFERING SUMMARY

Available SF: 4,220 - 36,585 SF

Lease Rate: Negotiable

Lot Size: 5.0 Acres

Year Built: 1980

Building Size: 54,605

Market: Winston-Salem

## PROPERTY OVERVIEW

Well located neighborhood center, just south of the high growth historic downtown Danville River district. Anchored by Family Dollar adjacent to Hardee's. Out parcel available. Great access and visibility off W. Main Street. Near Schoolfield Elementary, Ballou Park, Sovah Health Center and Danville Community College

## PROPERTY HIGHLIGHTS

- Well located neighborhood center, just south of the high growth historic downtown Danville River district.
- Anchored by Family Dollar adjacent to Hardee's. .054 AC +/- out parcel available.
- 36K SF Anchor space available (former Kroger).
- Great access and visibility off W. Main Street.
- Near Schoolfield Elementary, Ballou Park, Sovah Health Center and Danville Community College



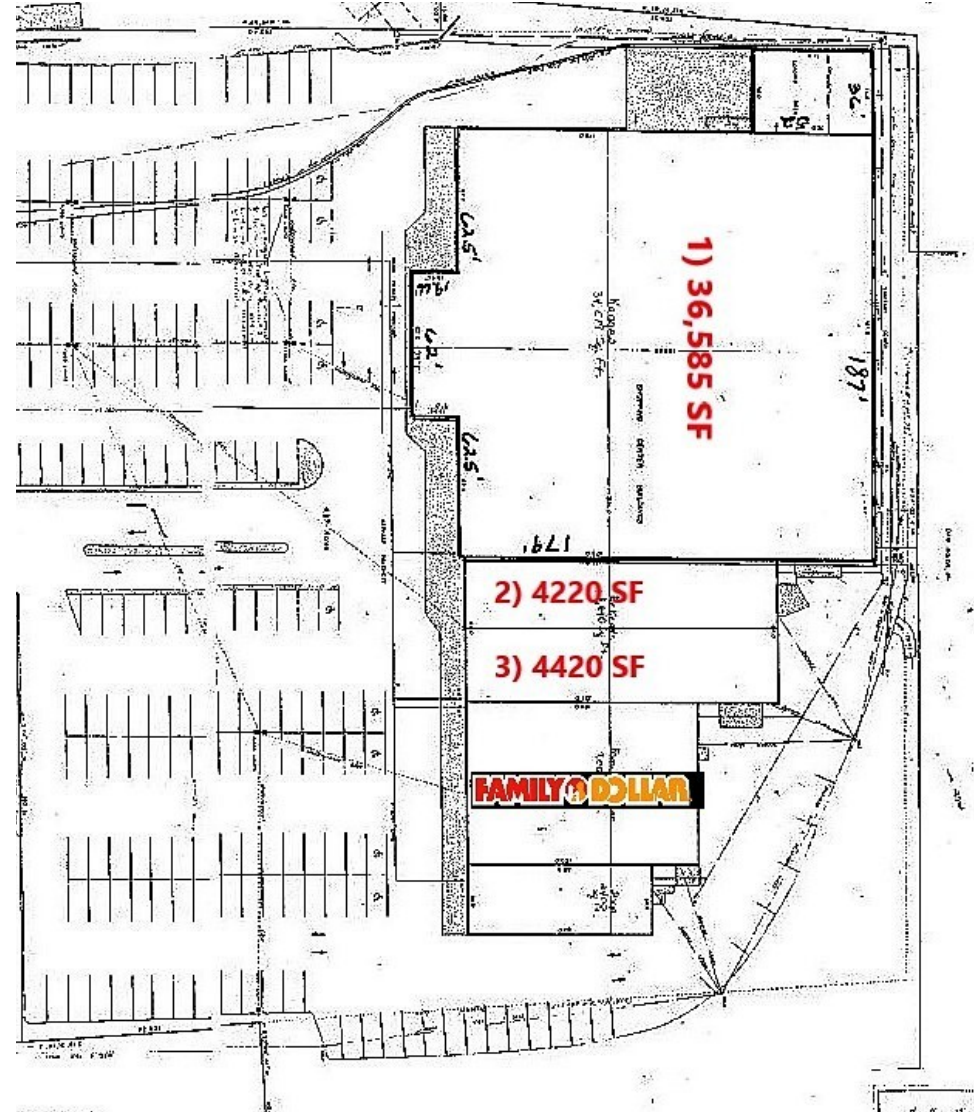
# Available Spaces

DAN RIVER PLAZA | 1340 W. MAIN ST., DANVILLE, VA 24541

REAL ESTATE  SOUTHEAST LLC

LEASE TYPE		NNN	LEASE SPACE		4,220 - 36,585 SF
LEASE TERM		Negotiable	LEASE RATE		Negotiable

SUITE	TENANT	SIZE (SF)	DESCRIPTION
1	Available	10,000 - 36,585 SF	Former Kroger. Open space, ready for renovation. LL will divide.
2	Available	4,220 - 8,640 SF	Former pharmacy space. Space has been divided. Can be combined to create 8640 SF.
3	Available	4,420 - 8,640 SF	Former pharmacy space. Space has been divided. Can be combined to create 8640 SF.





# Retailer Map

DAN RIVER PLAZA | 1340 W. MAIN ST., DANVILLE, VA 24541

REAL ESTATE  SOUTHEAST LLC

