



FALCON PLAZA

10052-10098 WOODLAND RD, LENEXA, KS 66220

FOR LEASE

» **WESTLAKE HARDWARE IS OPEN!**

» 1,257 SF - 3,761 SF of Retail/Office Space Available

» Join CVS, Blue Moose, Casey's Convenience Store, El Toro Loco, etc.

» Significant Traffic Generated From K-10 & Neighboring Price Chopper

» Median HHI - \$123,000 Within 1 Mile

» 7.18% Estimated Household Growth From 2019-2023

» \$17.50/SF NNN

RYAN SCHULTEIS

Brokerage Associate

913.945.3741

ryans@reececommercial.com

JOHN SWEENEY, CCIM

Senior Broker Associate

913.945.3718

john@reececommercial.com



REECE
COMMERCIAL REAL ESTATE

a Berkshire Hathaway Affiliate

FALCON PLAZA

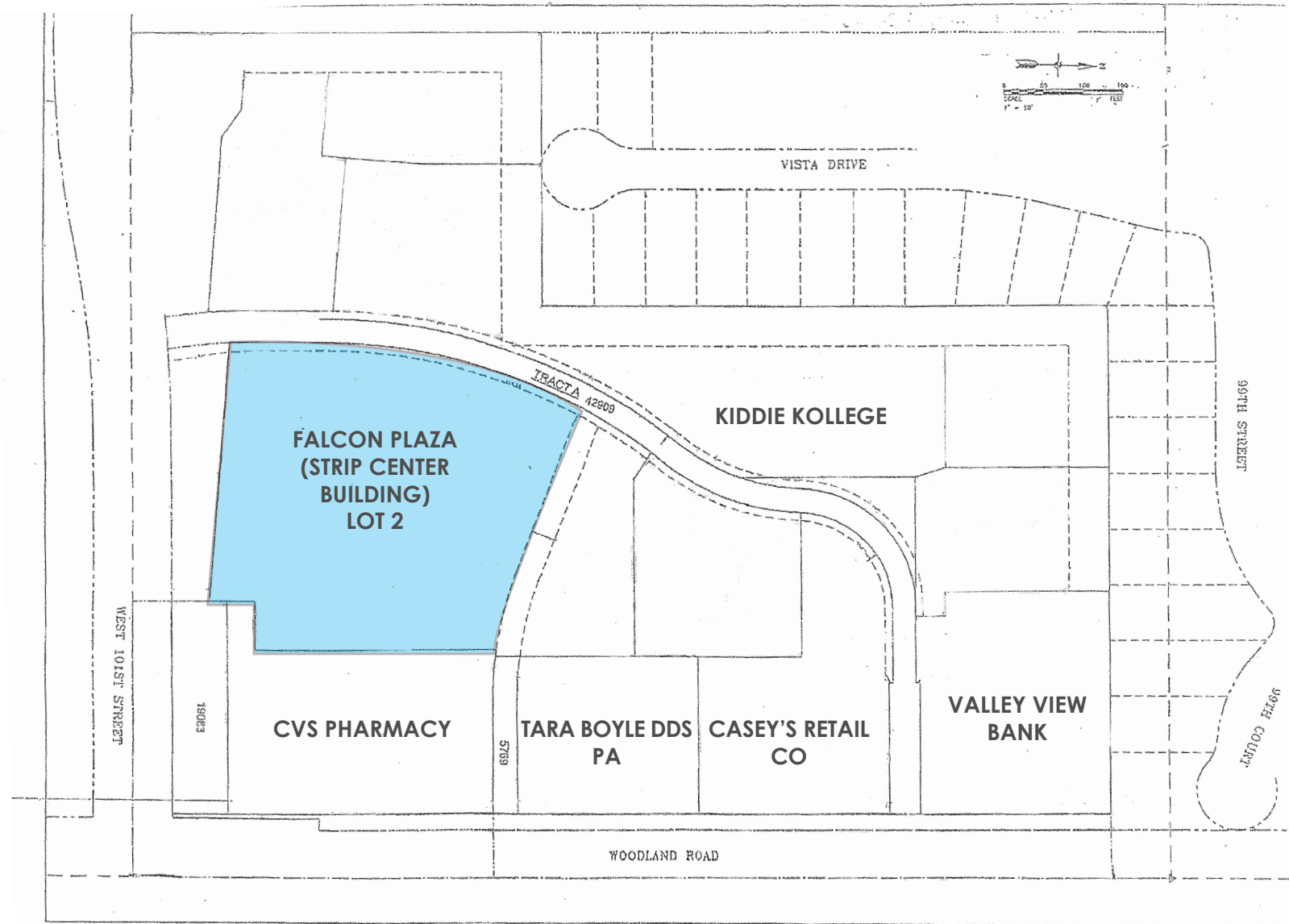
MAPS



The information in this package has been obtained from sources believed reliable. While we do not doubt its accuracy we have not verified it and make no guarantee, warranty or representation about it. It is your responsibility to independently confirm its accuracy and completeness. Any projections, opinions, assumptions, or estimates used are for example only and do not represent the current or future performance of the property. You and your advisors should conduct a careful, independent investigation of the property to determine to your satisfaction the suitability of the property for your needs. © 2019

SITE PLAN & AVAILABLE

MAPS



The information in this package has been obtained from sources believed reliable. While we do not doubt its accuracy we have not verified it and make no guarantee, warranty or representation about it. It is your responsibility to independently confirm its accuracy and completeness. Any projections, opinions, assumptions, or estimates used are for example only and do not represent the current or future performance of the property. You and your advisors should conduct a careful, independent investigation of the property to determine to your satisfaction the suitability of the property for your needs.



SITE PLAN & AVAILABLE

MAPS



AVAILABLE SUITES	
SUITE	SF
10070	1,510
10054	1,534-3,761
10068	1,257
10068-10070	2,767
10082	1,688

The information in this package has been obtained from sources believed reliable. While we do not doubt its accuracy we have not verified it and make no guarantee, warranty or representation about it. It is your responsibility to independently confirm its accuracy and completeness. Any projections, opinions, assumptions, or estimates used are for example only and do not represent the current or future performance of the property. You and your advisors should conduct a careful, independent investigation of the property to determine to your satisfaction the suitability of the property for your needs.

10052-10098 WOODLAND RD,

PHOTOS



The information in this package has been obtained from sources believed reliable. While we do not doubt its accuracy we have not verified it and make no guarantee, warranty or representation about it. It is your responsibility to independently confirm its accuracy and completeness. Any projections, opinions, assumptions, or estimates used are for example only and do not represent the current or future performance of the property. You and your advisors should conduct a careful, independent investigation of the property to determine to your satisfaction the suitability of the property for your needs.



GROWING RETAIL K-10 COR-

RETAIL MAP



AD-

101st St & Woodland Rd, Lenexa, KS



TRAFFIC

59,500 Vehicles/day on K-10



HOUSE-

12,019 - 3 Miles

The information in this package has been obtained from sources believed reliable. While we do not doubt its accuracy we have not verified it and make no guarantee, warranty or representation about it. It is your responsibility to independently confirm its accuracy and completeness. Any projections, opinions, assumptions, or estimates used are for example only and do not represent the current or future performance of the property. You and your advisors should conduct a careful, independent investigation of the property to determine to your satisfaction the suitability of the property for your needs.



REECE
COMMERCIAL REAL ESTATE

a Berkshire Hathaway Affiliate