

LEASE

Johnstown Station

**257 JOHNSTOWN CENTER DRIVE
UNIT 205**

Johnstown, CO 80534

PRESENTED BY:

COBEY WESS

O: 970.691.1140

cobey.wess@svn.com

CO #100024581



PROPERTY SUMMARY



OFFERING SUMMARY

BUILDING SIZE:	27,836 SF
YEAR BUILT:	2005
ZONING:	commercial
MARKET:	Northern Colorado
SUBMARKET:	Johnstown

PROPERTY OVERVIEW

This building consists of street level retail and second floor office space. The 27,836 SF building has an attractive tenant mix including medical, dental, and optometrist offices, restaurants, a salon and many small business offices. It shares a development with the town's main grocery store and McDonald's. The facility was built in 2005 and has been extremely well maintained.

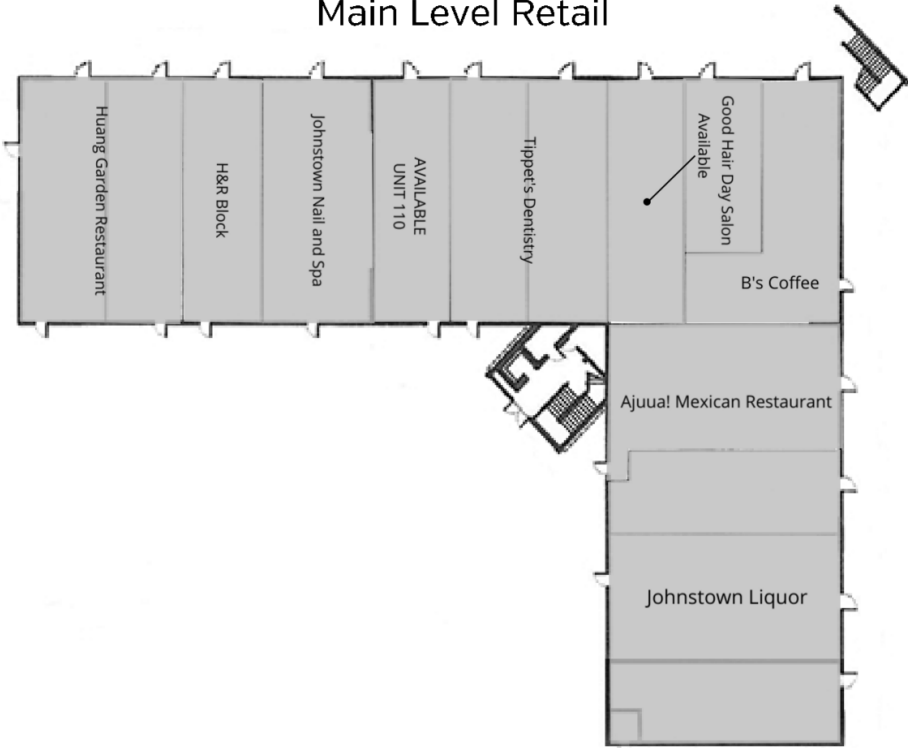
PROPERTY HIGHLIGHTS

- Unit 205 is an efficient office space with large open area and 2 private offices
- Flexible space configuration for a variety of Retail and Office uses
- This center contains the majority of the towns amenities
- Shadow anchored by Hay's Market and McDonald's

COBEY WESS
O: 970.691.1140
cobey.wess@svn.com
CO #100024581

PLANS

Main Level Retail



Second Floor- Office



LEGEND

Available
Common Area
Unavailable

COBEY WESS

O: 970.691.1140

cobey.wess@svn.com

CO #100024581

RETAILER MAP



Google

Map data © 2023 Google Imagery © 2023 , Airbus, Maxar Technologies, U.S. Geological Survey, USDA/FPAC/GEO

COBEY WESS

O: 970.691.1140

cobey.wess@svn.com

CO #100024581