

# Galleria Parkway

MADISON, MS 39110

## FOR SALE

Commercial Land

### PROPERTY FEATURES

- Smallest lot size: 1.3 acres
- Possibility of combining adjacent lots for larger projects. The largest contiguous lot size is 24.5 acres
- Ideal for retail businesses or office developments
- Great visibility from I-55
- Proximity to residential areas and other commercial establishments
- Opportunity for custom development and design
- **Co-Brokered with E. David Cox, Broker**  
[edavidcox@gmail.com](mailto:edavidcox@gmail.com)



Google

Google, U.S. Geological Survey, USDA/FPAC/Geo



**Jon-David Johnson, CCIM**

COMMERCIAL/INVESTMENT REAL ESTATE ADVISOR

601.707.5555

[jondavid.johnson@sperrycga.com](mailto:jondavid.johnson@sperrycga.com)

MS #B-17543

**Kim Bobbitt**

ASSOCIATE

601.209.6593

[kim.bobbitt@sperrycga.com](mailto:kim.bobbitt@sperrycga.com)

MS #24085

Each office independently owned and operated.

We obtained the information above from sources we believe to be reliable. However, we have not verified its accuracy and make no guarantee, warranty or representation about it. It is submitted subject to the possibility of errors, omissions, change of price, rental or other conditions, prior sale, lease or financing, or withdrawal without notice. We include projections, opinions, assumptions or estimates for example only, and they may not represent current or future performance of the property. You and your tax and legal advisors should conduct your own investigation of the property and transaction.

[www.SperryCGA.com](http://www.SperryCGA.com)



# Galleria Parkway

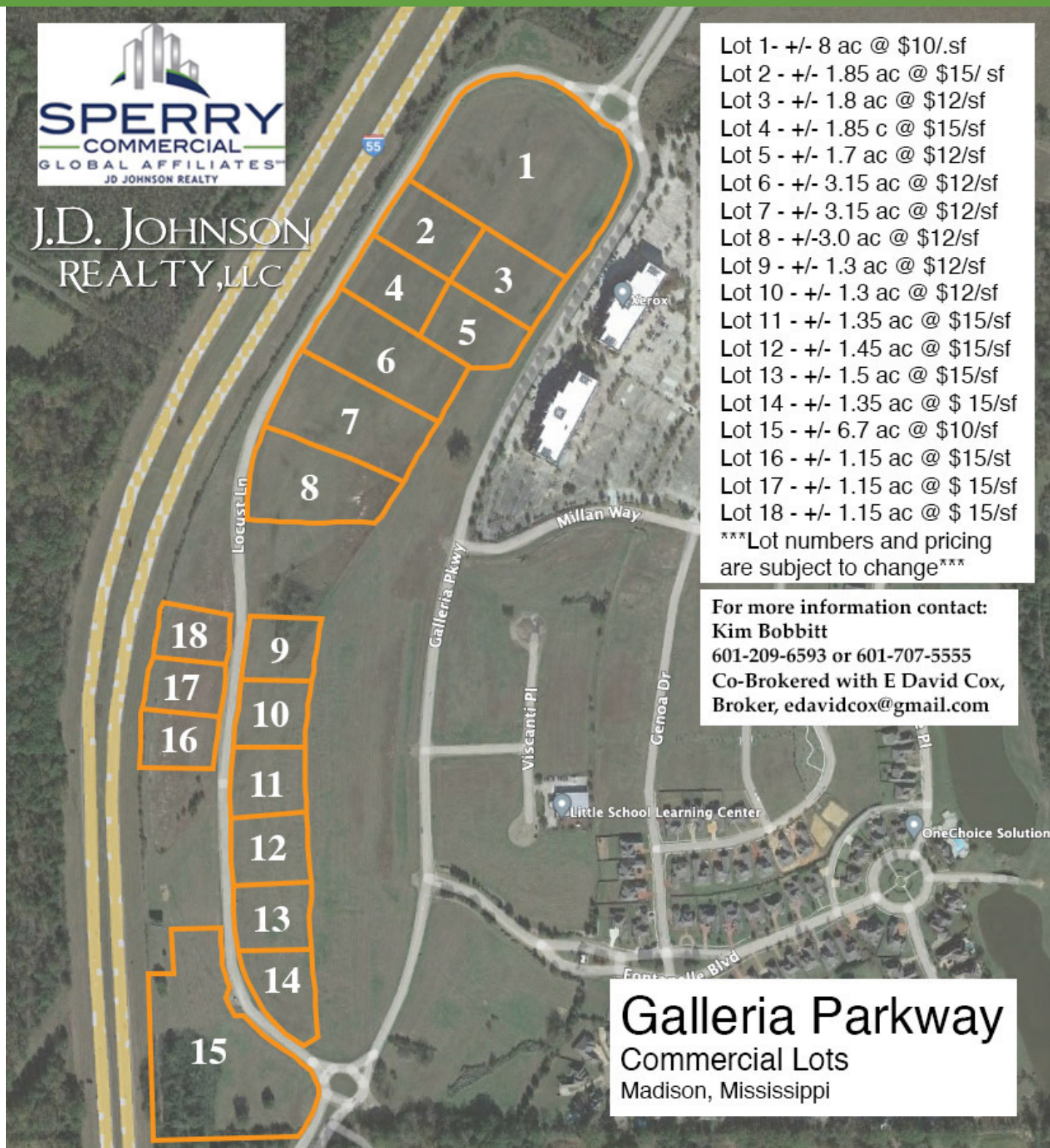
MADISON, MS 39110

## FOR SALE

Commercial Land



J.D. JOHNSON  
REALTY, LLC



Lot 1 - +/- 8 ac @ \$10/sf  
Lot 2 - +/- 1.85 ac @ \$15/sf  
Lot 3 - +/- 1.8 ac @ \$12/sf  
Lot 4 - +/- 1.85 c @ \$15/sf  
Lot 5 - +/- 1.7 ac @ \$12/sf  
Lot 6 - +/- 3.15 ac @ \$12/sf  
Lot 7 - +/- 3.15 ac @ \$12/sf  
Lot 8 - +/- 3.0 ac @ \$12/sf  
Lot 9 - +/- 1.3 ac @ \$12/sf  
Lot 10 - +/- 1.3 ac @ \$12/sf  
Lot 11 - +/- 1.35 ac @ \$15/sf  
Lot 12 - +/- 1.45 ac @ \$15/sf  
Lot 13 - +/- 1.5 ac @ \$15/sf  
Lot 14 - +/- 1.35 ac @ \$15/sf  
Lot 15 - +/- 6.7 ac @ \$10/sf  
Lot 16 - +/- 1.15 ac @ \$15/st  
Lot 17 - +/- 1.15 ac @ \$15/sf  
Lot 18 - +/- 1.15 ac @ \$15/sf  
\*\*\*Lot numbers and pricing are subject to change\*\*\*

For more information contact:

Kim Bobbitt

601-209-6593 or 601-707-5555

Co-Brokered with E David Cox,  
Broker, edavidcox@gmail.com

**Galleria Parkway**  
Commercial Lots  
Madison, Mississippi



**Jon-David Johnson, CCIM**

COMMERCIAL/INVESTMENT REAL ESTATE ADVISOR

601.707.5555

jondavid.johnson@sperrycga.com

MS #B-17543

**Kim Bobbitt**

ASSOCIATE

601.209.6593

kim.bobbitt@sperrycga.com

MS #24085

Each office independently owned and operated.

We obtained the information above from sources we believe to be reliable. However, we have not verified its accuracy and make no guarantee, warranty or representation about it. It is submitted subject to the possibility of errors, omissions, change of price, rental or other conditions, prior sale, lease or financing, or withdrawal without notice. We include projections, opinions, assumptions or estimates for example only, and they may not represent current or future performance of the property. You and your tax and legal advisors should conduct your own investigation of the property and transaction.

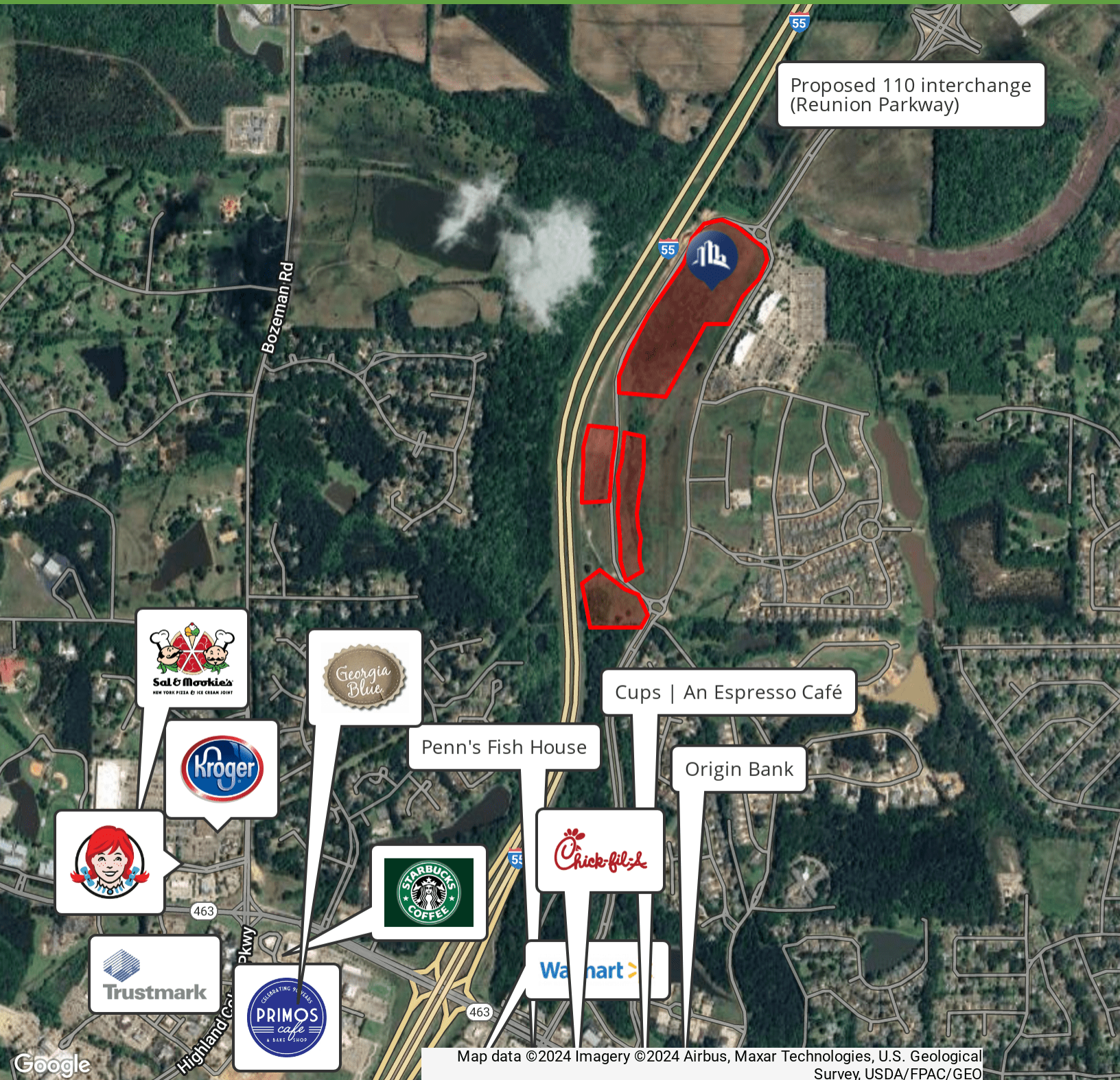


# Galleria Parkway

MADISON, MS 39110

**FOR SALE**

Commercial Land



**Jon-David Johnson, CCIM**  
COMMERCIAL/INVESTMENT REAL ESTATE ADVISOR  
601.707.5555  
jondavid.johnson@sperrycga.com  
MS #B-17543

**Kim Bobbitt**  
ASSOCIATE  
601.209.6593  
kim.bobbitt@sperrycga.com  
MS #24085

Each office independently owned and operated.

We obtained the information above from sources we believe to be reliable. However, we have not verified its accuracy and make no guarantee, warranty or representation about it. It is submitted subject to the possibility of errors, omissions, change of price, rental or other conditions, prior sale, lease or financing, or withdrawal without notice. We include projections, opinions, assumptions or estimates for example only, and they may not represent current or future performance of the property. You and your tax and legal advisors should conduct your own investigation of the property and transaction.

[www.SperryCGA.com](http://www.SperryCGA.com)