

5353 WAYZATA OFFICE CENTER

5353 WAYZATA BOULEVARD, ST. LOUIS PARK, MN 55416



OFFERING SUMMARY

Available SF: 787 - 2,150 SF

Lease Rate: \$14.00 - 16.00 SF/yr
(NNN)

2018 Tax & CAM: \$13.07 SF

Year Built: 1979

Building Size: 112,304 SF

Market: Minneapolis/St. Paul

Submarket: West

PROPERTY OVERVIEW

- Southwest quadrant of Highways 100/I-394 and adjacent to The Shops at West End
- Sheltered Bus Stop On-Site
- Park N' Ride
- Convenient lodging for your out of town clients and consultants; Hilton Homewood Suites next door
- Associated Bank is anchor tenant

AREA AMENITIES include over twelve restaurants within walking distance including CRAVE; Cooper; The Loop; Raku Sushi & Lounge; Rojo Mexican Grill; Yard house; and more
Four Hotels: SpringHill Suites, DoubleTree; TownHill Suites and Hilton Homewood
Cub Foods/Liquor adjacent to property
Showplace Icon Theatres
Anthropologie; Lululemon Athletica; Creative Kidstuff; White House|Black Market; Phresh Salon; Haute Barre and more...

PROPERTY HIGHLIGHTS

- Suite 202 - 1,100 SF (available 11/1/18)
- Suite 210 - 1,029 SF
- Suite 211 - 778 SF
- Suite 250 - 2,150 SF

BARRY BIRNBERG

952.820.1673

barry.birnberg@northcocommercial.com

The information above has been obtained from services we believe to be reliable, however, we accept no responsibility for its correctness.

5353 WAYZATA OFFICE CENTER
5353 WAYZATA BOULEVARD, ST. LOUIS PARK, MN 55416



BARRY BIRNBERG

952.820.1673

barry.birnberg@northcocommercial.com

The information above has been obtained from services we believe to be reliable, however, we accept no responsibility for its correctness.

5353 WAYZATA OFFICE CENTER

5353 WAYZATA BOULEVARD, ST. LOUIS PARK, MN 55416



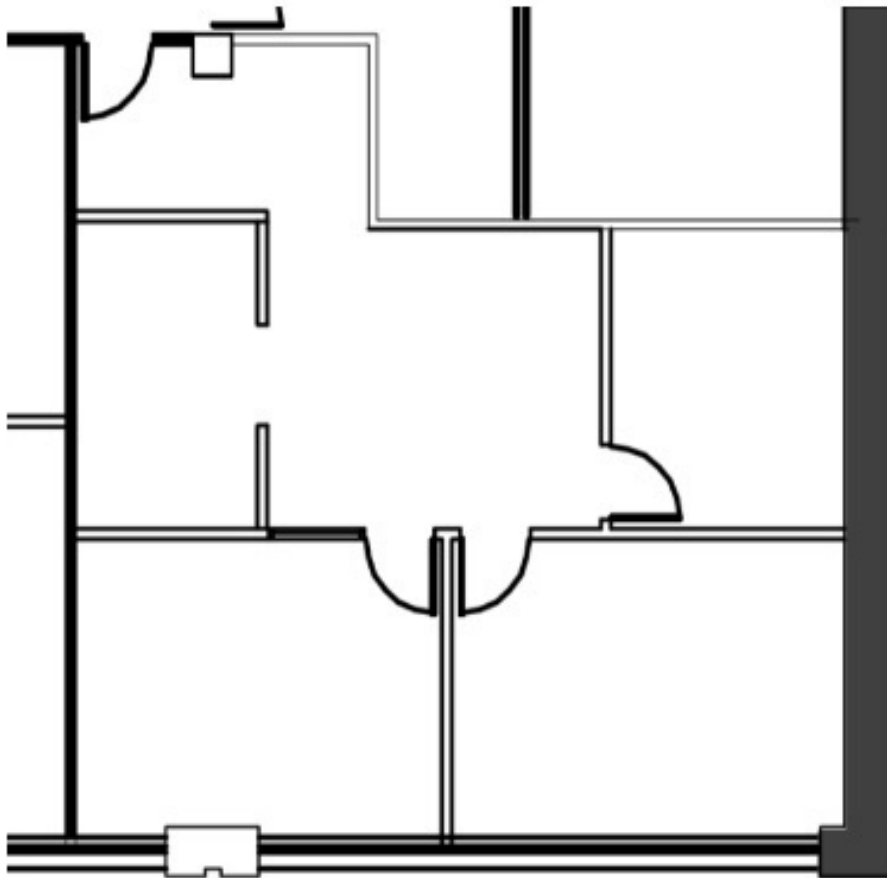
BARRY BIRNBERG

952.820.1673

barry.birnberg@northcocommercial.com

The information above has been obtained from services we believe to be reliable, however, we accept no responsibility for its correctness.

5353 WAYZATA OFFICE CENTER
5353 WAYZATA BOULEVARD, ST. LOUIS PARK, MN 55416



Suite 202
1,100 SF



(NOT TO SCALE)

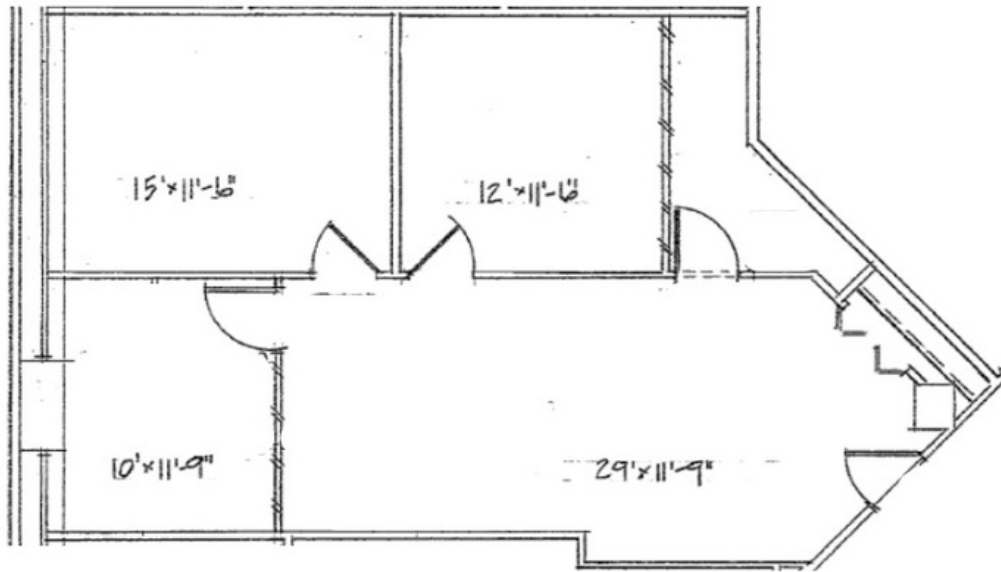
BARRY BIRNBERG

952.820.1673

barry.birnberg@northcocommercial.com

The information above has been obtained from services we believe to be reliable, however, we accept no responsibility for its correctness.

5353 WAYZATA OFFICE CENTER
5353 WAYZATA BOULEVARD, ST. LOUIS PARK, MN 55416



Suite 210
1,029 SF

(NOT TO SCALE)

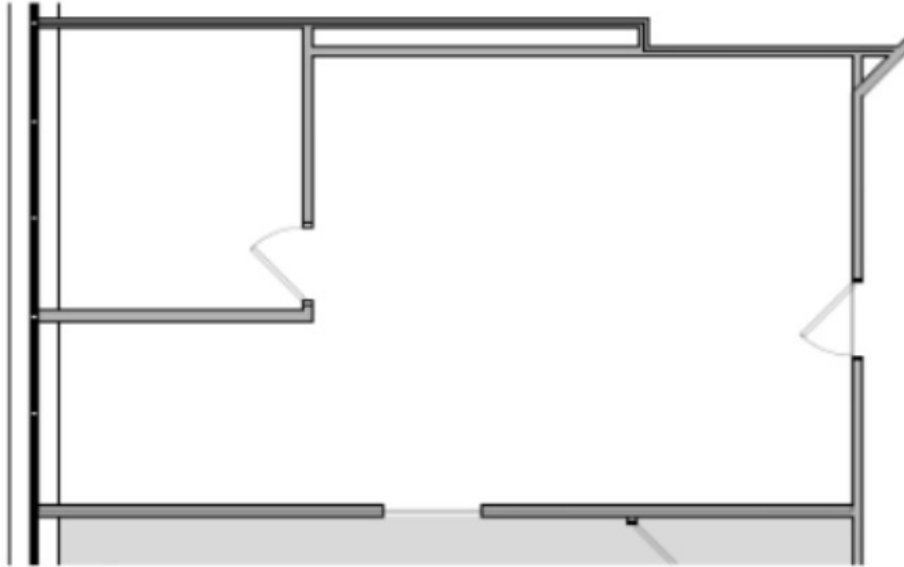
BARRY BIRNBERG

952.820.1673

barry.birnberg@northcocommercial.com

The information above has been obtained from services we believe to be reliable, however, we accept no responsibility for its correctness.

5353 WAYZATA OFFICE CENTER
5353 WAYZATA BOULEVARD, ST. LOUIS PARK, MN 55416



Suite 211
787 SF

(NOT TO SCALE)

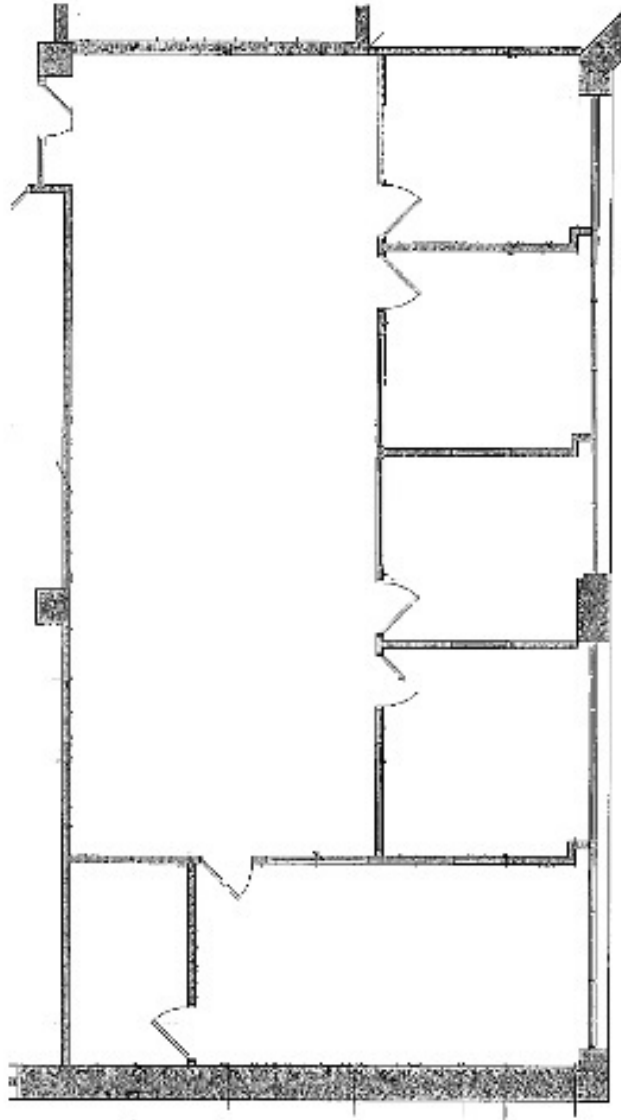
BARRY BIRNBERG

952.820.1673

barry.birnberg@northcocommercial.com

The information above has been obtained from services we believe to be reliable, however, we accept no responsibility for its correctness.

5353 WAYZATA OFFICE CENTER
5353 WAYZATA BOULEVARD, ST. LOUIS PARK, MN 55416



Suite 250
2,150 SF



(NOT TO SCALE)

BARRY BIRNBERG

952.820.1673

barry.birnberg@northcocommercial.com

The information above has been obtained from services we believe to be reliable, however, we accept no responsibility for its correctness.