



23280 Mynard Road

Greenwood, NE 68366

AVAILABLE SF: 6,000 - 12,000 SF

LEASE RATE: \$6.95 SF/yr (NNN)

BUILDING SIZE: 12,000 SF

LOT SIZE: 2.0 Acres

Property Features

- New flex building
- Clear span
- 20' Ceiling height
- 4 - 14'x14' overhead doors
- 6,000-12,000 SF available
- 2 acre lot with outdoor storage
- Convenient location between Omaha and Lincoln
- Estimated NNN \$2.00 PSF
- 2023 Q2 completion



Kyle Pelster

Senior Vice President

+1 402 255 6084

kpelster@npdodge.com

12915 West Dodge Road

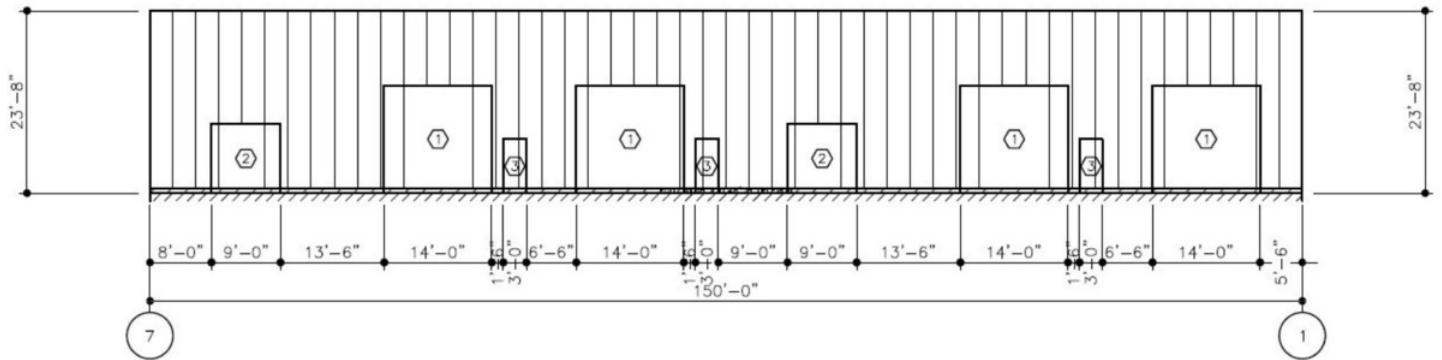
Omaha, NE 68154

+1 402 255 6060

www.nainpdodge.com

For Lease

23280 Mynard Road



Kyle Pelster
Senior Vice President
+1 402 255 6084
kpelster@npdodge.com

12915 West Dodge Road
Omaha, NE 68154
+1 402 255 6060
www.nainpdodge.com

NO WARRANTY OR REPRESENTATION, EXPRESS OR IMPLIED, IS MADE AS TO THE ACCURACY OF THE INFORMATION CONTAINED HEREIN, AND THE SAME IS SUBMITTED SUBJECT TO ERRORS, OMISSIONS, CHANGE OF PRICE, RENTAL OR OTHER CONDITIONS, PRIOR SALE, LEASE OR FINANCING, OR WITHDRAWAL WITHOUT NOTICE, AND OF ANY SPECIAL LISTING CONDITIONS IMPOSED BY OUR PRINCIPALS NO WARRANTIES OR REPRESENTATIONS ARE MADE AS TO THE CONDITION OF THE PROPERTY OR ANY HAZARDS CONTAINED THEREIN ARE ANY TO BE IMPLIED.