

Office | For Lease



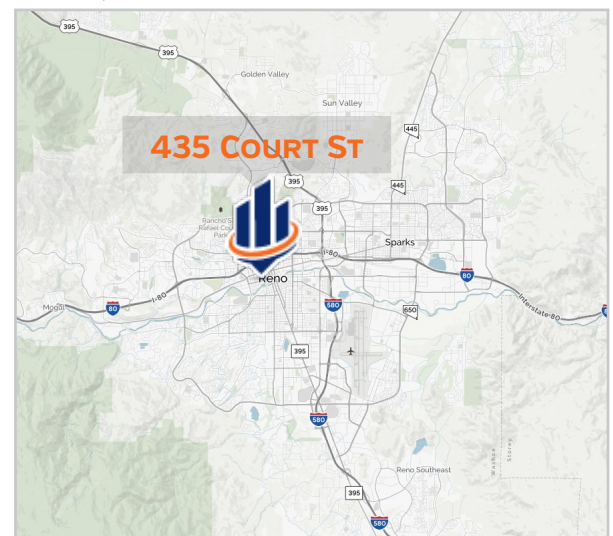
Lease Rate | \$1.80 PSF/Mo. (MG)

Property Features

- » ±2,941 square feet available
- » First floor contains a lobby, 3 large offices, a bathroom and a kitchen with access to the yard overlooking the river.
- » The second floor has 5.5 offices, 2 bathrooms, storage and a covered balcony.
- » The yard overlooking the river is landscaped with a covered "green" workspace.
- » The property has a garage, basement, and attic for storage or a creative mind.
- » Onsite parking, signage on Court St and Charter internet.
- » Located on the north end of Court St west of Arlington, overlooking the Truckee River and Downtown.

Downtown Office Building

435 Court St,
Reno, NV 89501

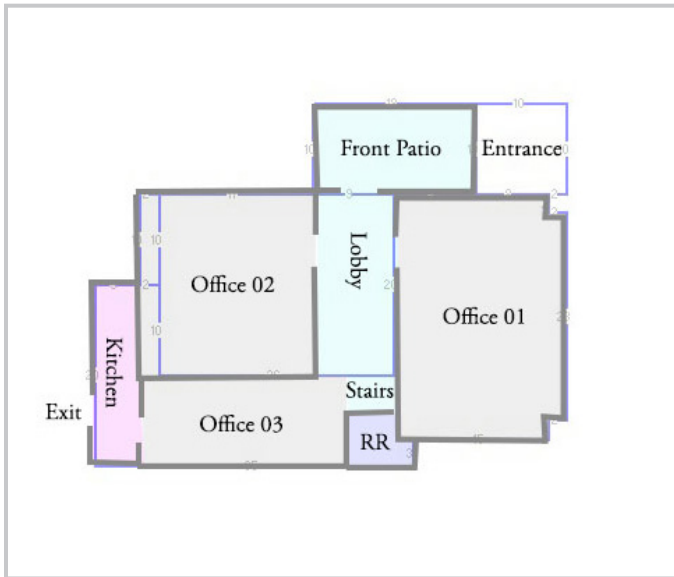


For More Information Contact:

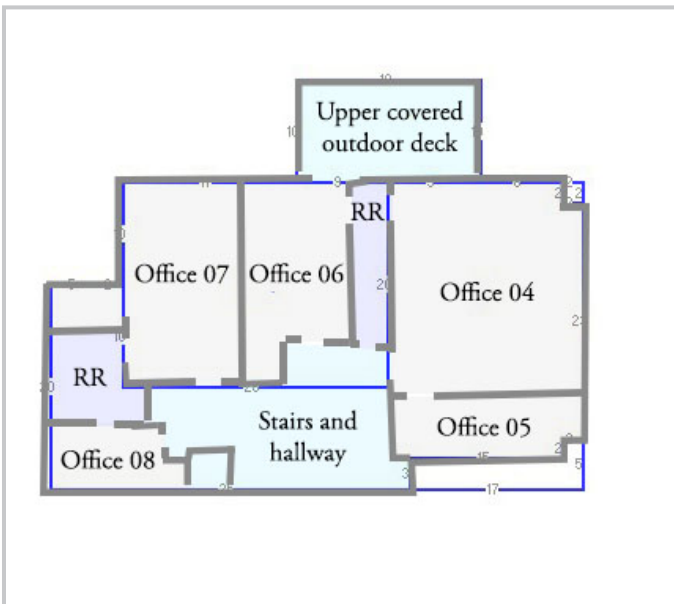
Casey Prostinak
775.813.2866
cprostinak@svn.com

For Lease

1st Floor Plan



2nd Floor Plan



Property Photos



Demographics 2018 Estimate

	1 Mile	3 Miles	5 Miles
Population	21,669	131,378	234,209
Households	11,764	59,058	101,174
Average Income	\$51,016	\$60,274	\$65,788
DAYTIME POPULATION	32,930	119,256	188,249,