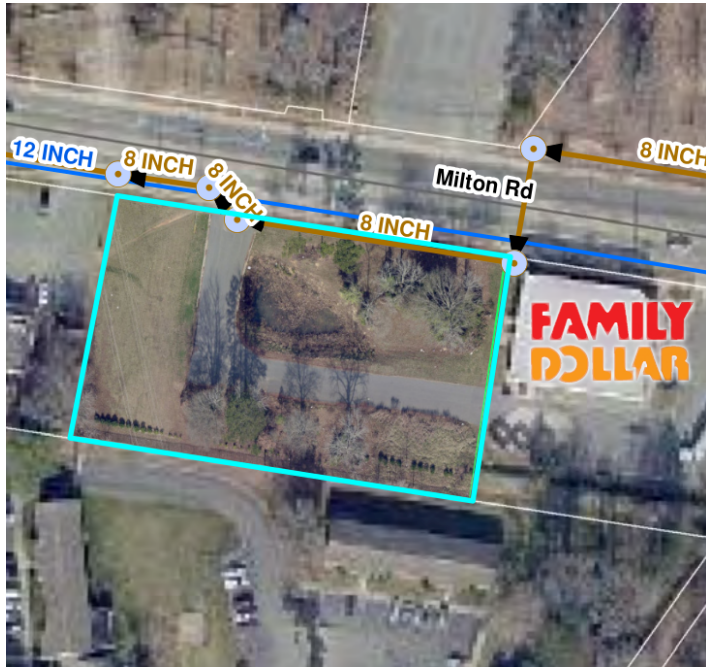


PRIME EAST CHARLOTTE LAND - 1.37 ACRES

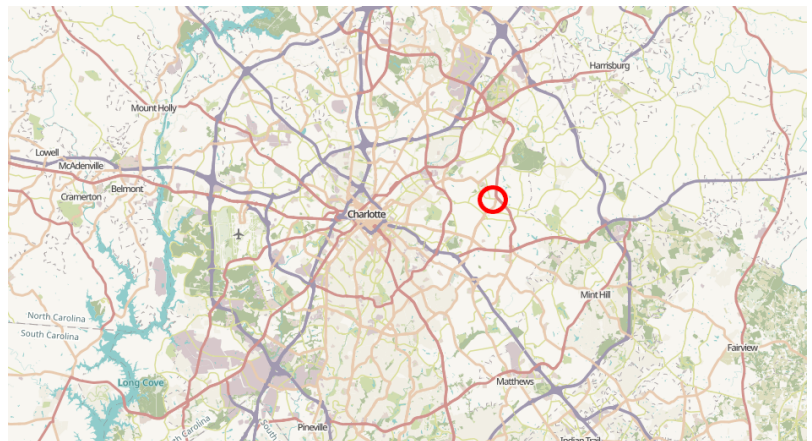
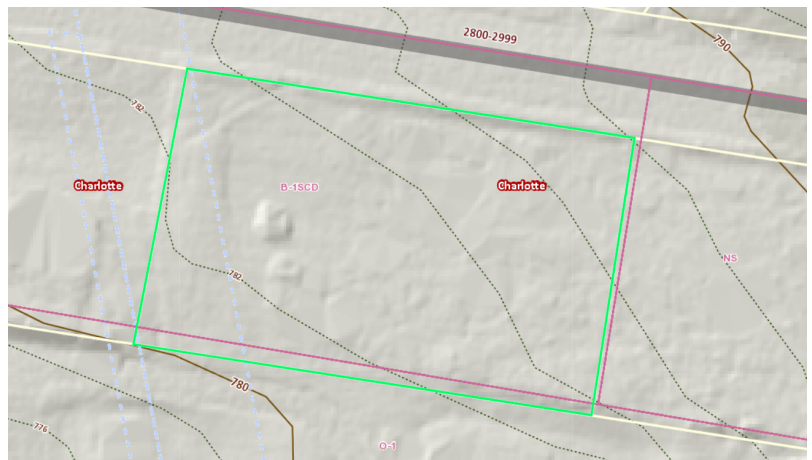
2830 MILTON ROAD



OFFERING SUMMARY

PRICE:	\$750,000
LOT SIZE:	1.371 Acres
ZONING:	B-1SCD
PERMITTED USES:	Urgent Care, Shopping Center, and other retail
FRONTAGE:	309 FT
TRAFFIC COUNT:	16,000 Cars Per Day
UTILITIES:	Water/Sewer
APN:	099-21-128

PROPERTY OVERVIEW



KW COMMERCIAL
3430 Toringdon Way, Suite 200
Charlotte, NC 28277

PATRICK REGISTER
C: (704) 621-0190
register@kwcommercial.com
233487, NC

JAKE MEINZER
O: 513-265-6348
JakeMainzer@kw.com
335045, NC

SCOTT STEVENS
O: 704-400-5040
scottstevens@kw.com
272970, NC