



**COMMERCIAL REAL ESTATE**

RETAIL PROPERTY FOR LEASE



**1327 W Jackson St**  
Thomasville, GA 31792

**TREY DESANTIS**

Partner/Associate  
850.766.6868  
trej@tlgproperty.com

**TLG REAL ESTATE SERVICES**

3520 Thomasville Road, Suite 200  
Tallahassee, FL 32309  
O: 850.385.6363



EXECUTIVE SUMMARY  
**1327 W JACKSON ST**  
 THOMASVILLE, GA 31792



### OFFERING SUMMARY

**Lease Rate:** 31,650 sf - Big Box:  
\$7.50 sf, NNN

9,720 sf - Small Bay:  
\$12.00 sf, NNN

**Lot Size:** 6.91 Acres

**Year Built:** 1992

**Zoning:** Commercial

**Thomas County APN:** 018 016039

### PROPERTY OVERVIEW

This shopping center offers 41,370 SF of retail space, 175 free surface parking spaces, and three existing docks. There is an available outparcel for sale at this property as well.

### LOCATION OVERVIEW

Fronting 319, also known as, West Jackson Street and just north of the HWY 319 bypass and Pinetree Blvd in Thomasville. This corridor is the gateway into downtown Thomasville from the south. Recent develop in the area includes Senior Life Insurance's corporate off ice, Ashley Park Apartments, Thomasville's newest luxury apartment complex, Turner Furniture's corporate off ice, and a new Dollar General. Just south of this site are some of Thomasville's nicest residential neighborhoods.

**Trey DeSantis**  
 850.766.6868  
 trey@tlgproperty.com

**TLG REAL ESTATE SERVICES**

3520 Thomasville Road, Suite 200, Tallahassee, FL 32309  
 850.385.6363







ADDITIONAL PHOTOS  
**1327 W JACKSON ST**  
THOMASVILLE, GA 31792



**Trey DeSantis**  
850.766.6868  
trey@tlgproperty.com

**TLG REAL ESTATE SERVICES**  
3520 Thomasville Road, Suite 200, Tallahassee, FL 32309  
850.385.6363







## RETAILER MAP

1327 W JACKSON ST

THOMASVILLE, GA 31792



Trey DeSantis  
850.766.6868  
trey@tlgproperty.com

## TLG REAL ESTATE SERVICES

3520 Thomasville Road, Suite 200, Tallahassee, FL 32309

850.385.6363



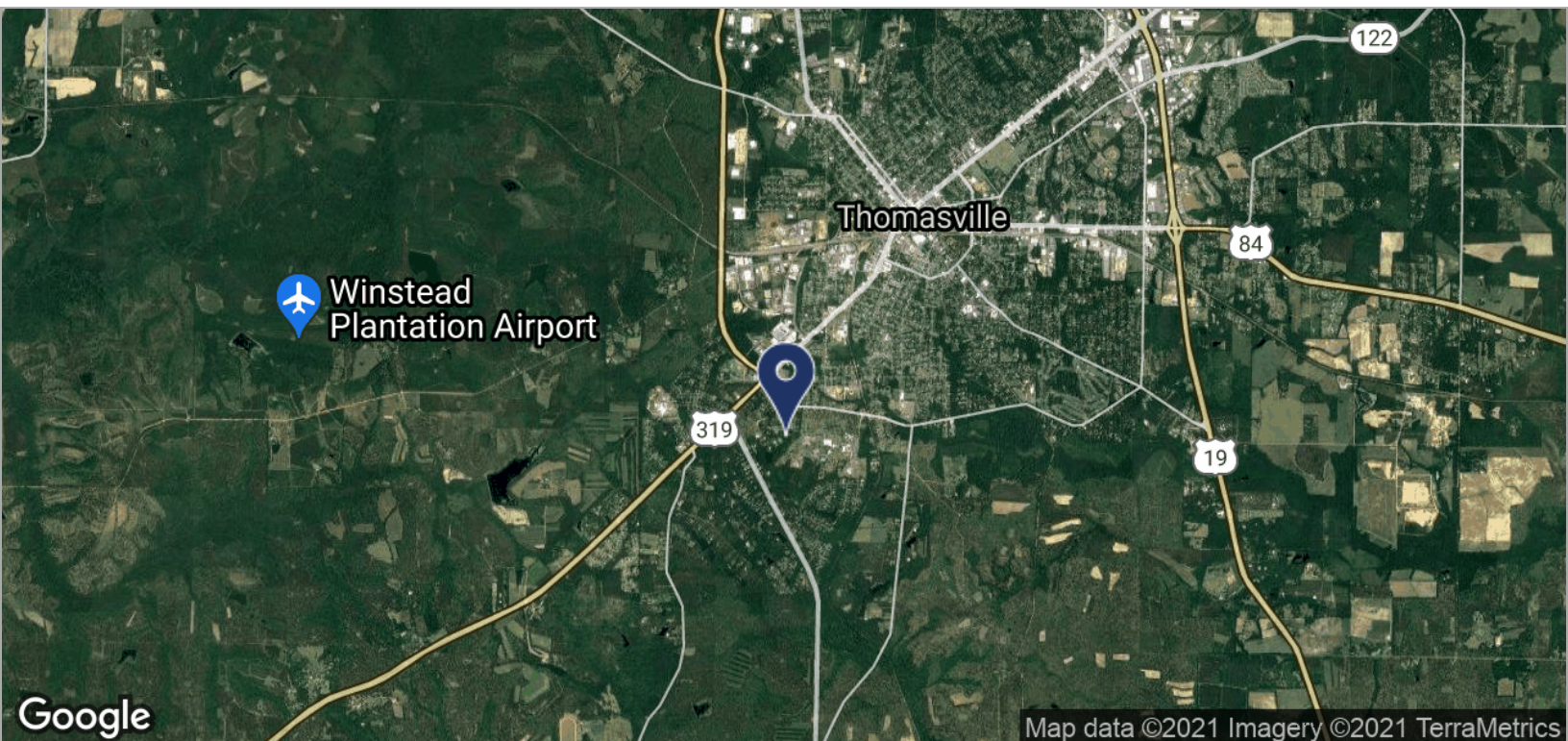
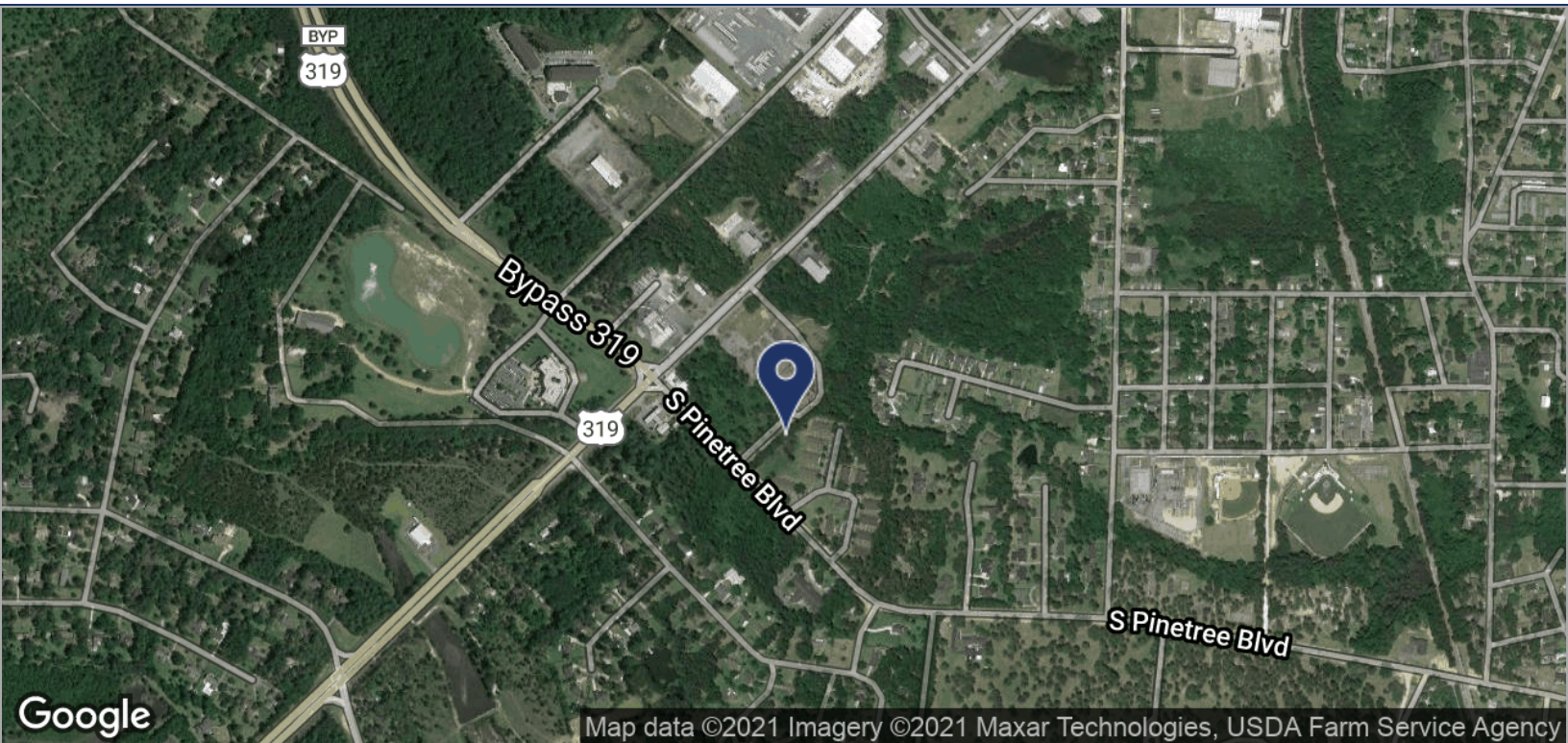




LOCATION MAPS

**1327 W JACKSON ST**

THOMASVILLE, GA 31792



**Trey DeSantis**  
850.766.6868  
trey@tlgproperty.com

**TLG REAL ESTATE SERVICES**  
3520 Thomasville Road, Suite 200, Tallahassee, FL 32309  
850.385.6363

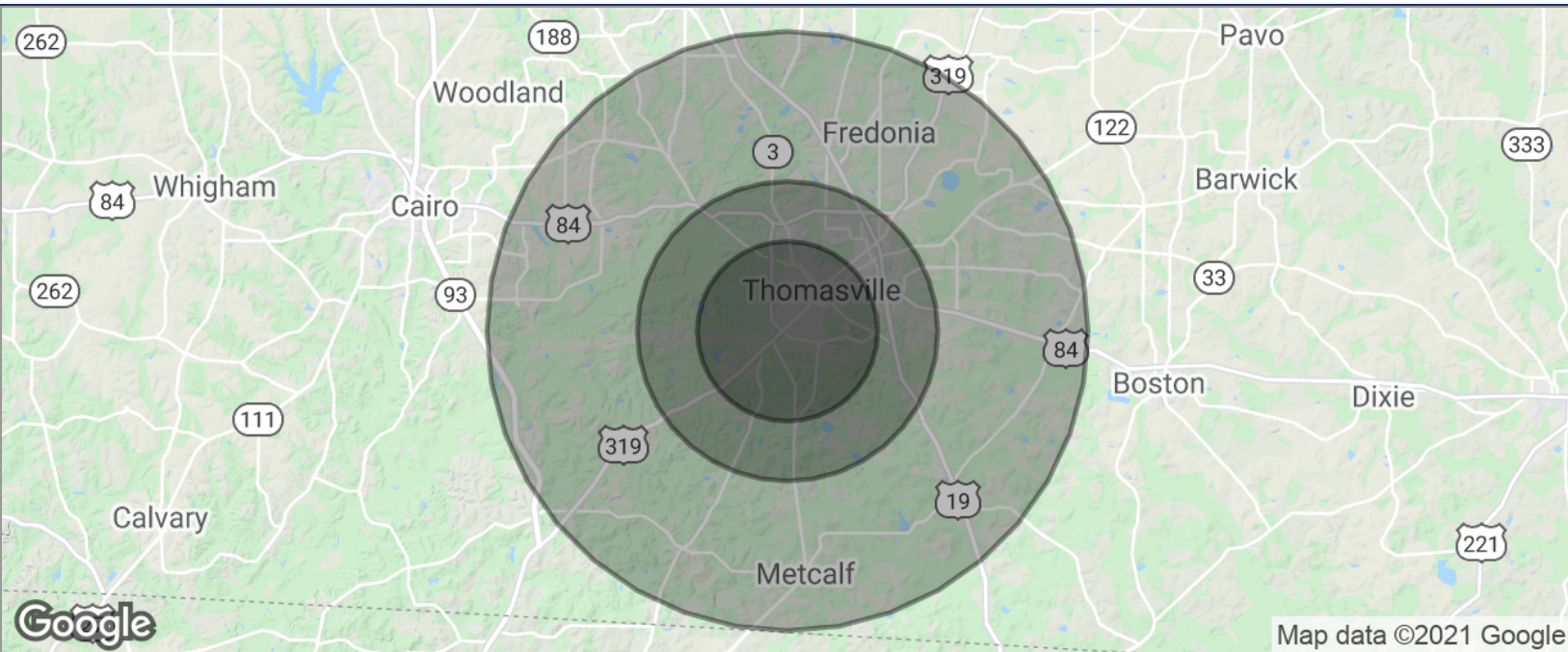


This information has been obtained from sources believed reliable. We have not verified it and make no guarantee, warranty or representation about it. Any projections, opinions, assumptions or estimates used are for example only and do not represent the current or future performance of the property. You and your advisors should conduct a careful, independent investigation of the property to determine to your satisfaction the suitability of the property for your needs. Photos herein are the property of their respective owners and use of these images without the express written content of the owner is prohibited.





DEMOGRAPHICS MAP  
**1327 W JACKSON ST**  
 THOMASVILLE, GA 31792



POPULATION	3 MILES	5 MILES	10 MILES
TOTAL POPULATION	7,743	18,951	39,714
MEDIAN AGE	39.3	37.8	38.1
MEDIAN AGE (MALE)	37.4	36.2	37.0
MEDIAN AGE (FEMALE)	41.6	39.4	38.9
HOUSEHOLDS & INCOME	3 MILES	5 MILES	10 MILES
TOTAL HOUSEHOLDS	3,095	7,574	15,517
# OF PERSONS PER HH	2.5	2.5	2.6
AVERAGE HH INCOME	\$60,733	\$57,276	\$54,723
AVERAGE HOUSE VALUE	\$215,205	\$202,696	\$200,200

\* Demographic data derived from 2010 US Census

**Trey DeSantis**  
 850.766.6868  
 trey@tlgproperty.com

**TLG REAL ESTATE SERVICES**  
 3520 Thomasville Road, Suite 200, Tallahassee, FL 32309  
 850.385.6363

