

PROFESSIONAL CONDO FOR SALE

WHITE MARSH PROFESSIONAL CENTER

8100 Sandpiper Circle, Suite 106, Nottingham, MD 21236

Available: 2,629 SF

Professional Condo For Sale



LISTING DATA

COMMENTS:

Price reduced to \$208/SF

ECONOMIC DATA

PROPERTY INFORMATION

COUNTY: Baltimore
MARKET: Baltimore
SUBMARKET: Baltimore County East

BUILDING DATA

TOTAL BUILDING SF: 45,000 SF
YEAR BUILT: 2009
ZONING: ML

PROPERTY OVERVIEW

Class A medical condo for sale
Condo fees are \$605.22/month
Taxes 2022-2023 are \$6,915.75/yr

LOCATION OVERVIEW

Excellent access to I-695, I-95, Routes 43 and Rt 1. Located near The Avenue At White Marsh and White Marsh Mall. Convenient to Giant Food, Barnes and Noble and Ikea.

PROPERTY HIGHLIGHTS

- Built out as physical therapy
- Suite directly off the lobby on the 1st floor; great visibility
- High-image building is located on a beautifully landscaped 3.5-acre property
- Security access system with key FOB is located adjacent to all entry doors
- On-site Professional Property Management
- 5:1 free surface parking

Bill Harrison
Senior Vice President
443.741.4045
bharrison@lee-associates.com

Ben Brooks
Senior Associate
443.741.4053
bbrooks@lee-associates.com

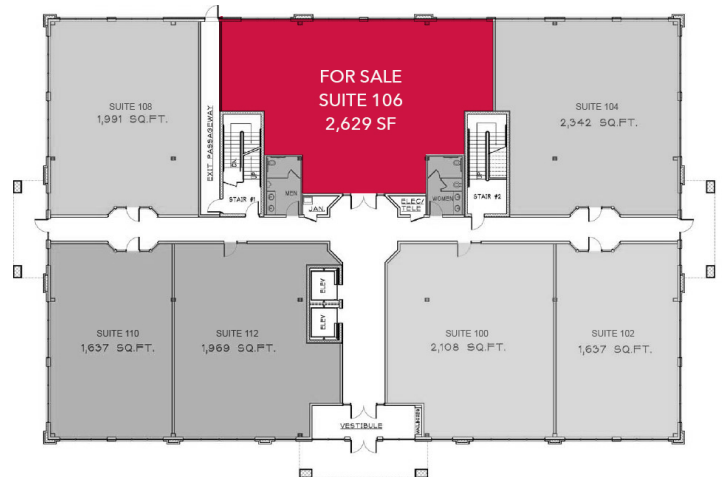
All information furnished regarding property for sale, rental or financing is from sources deemed reliable, but no warranty or representation is made to the accuracy thereof and same is submitted to errors, omissions, change of price, rental or other conditions prior to sale, lease or financing or withdrawal without notice. No liability of any kind is to be imposed on the broker herein.

PROFESSIONAL CONDO FOR SALE WHITE MARSH PROFESSIONAL CENTER

8100 Sandpiper Circle, Suite 106, Nottingham, MD 21236

Available: 2,629 SF

LEE & ASSOCIATES
COMMERCIAL REAL ESTATE SERVICES



Bill Harrison
Senior Vice President
443.741.4045
bharrison@lee-associates.com

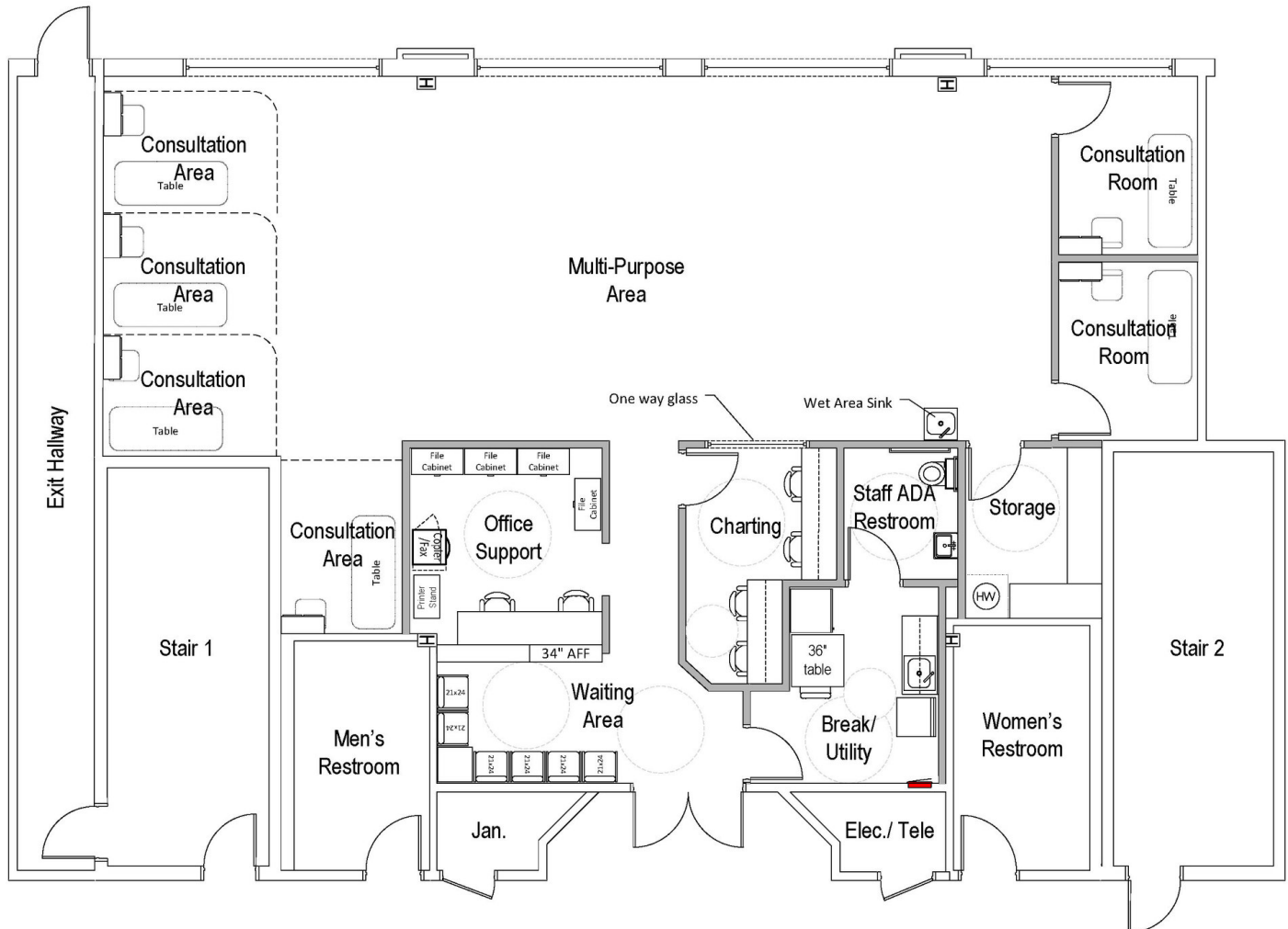
Ben Brooks
Senior Associate
443.741.4053
bbrooks@lee-associates.com

All information furnished regarding property for sale, rental or financing is from sources deemed reliable, but no warranty or representation is made to the accuracy thereof and same is submitted to errors, omissions, change of price, rental or other conditions prior to sale, lease or financing or withdrawal without notice. No liability of any kind is to be imposed on the broker herein.

PROFESSIONAL CONDO FOR SALE WHITE MARSH PROFESSIONAL CENTER

8100 Sandpiper Circle, Suite 106, Nottingham, MD 21236

Available: 2,629 SF



First Floor | 2,629 SF | 1st floor with great visibility

Bill Harrison
Senior Vice President
443.741.4045
bharrison@lee-associates.com

Ben Brooks
Senior Associate
443.741.4053
bbrooks@lee-associates.com

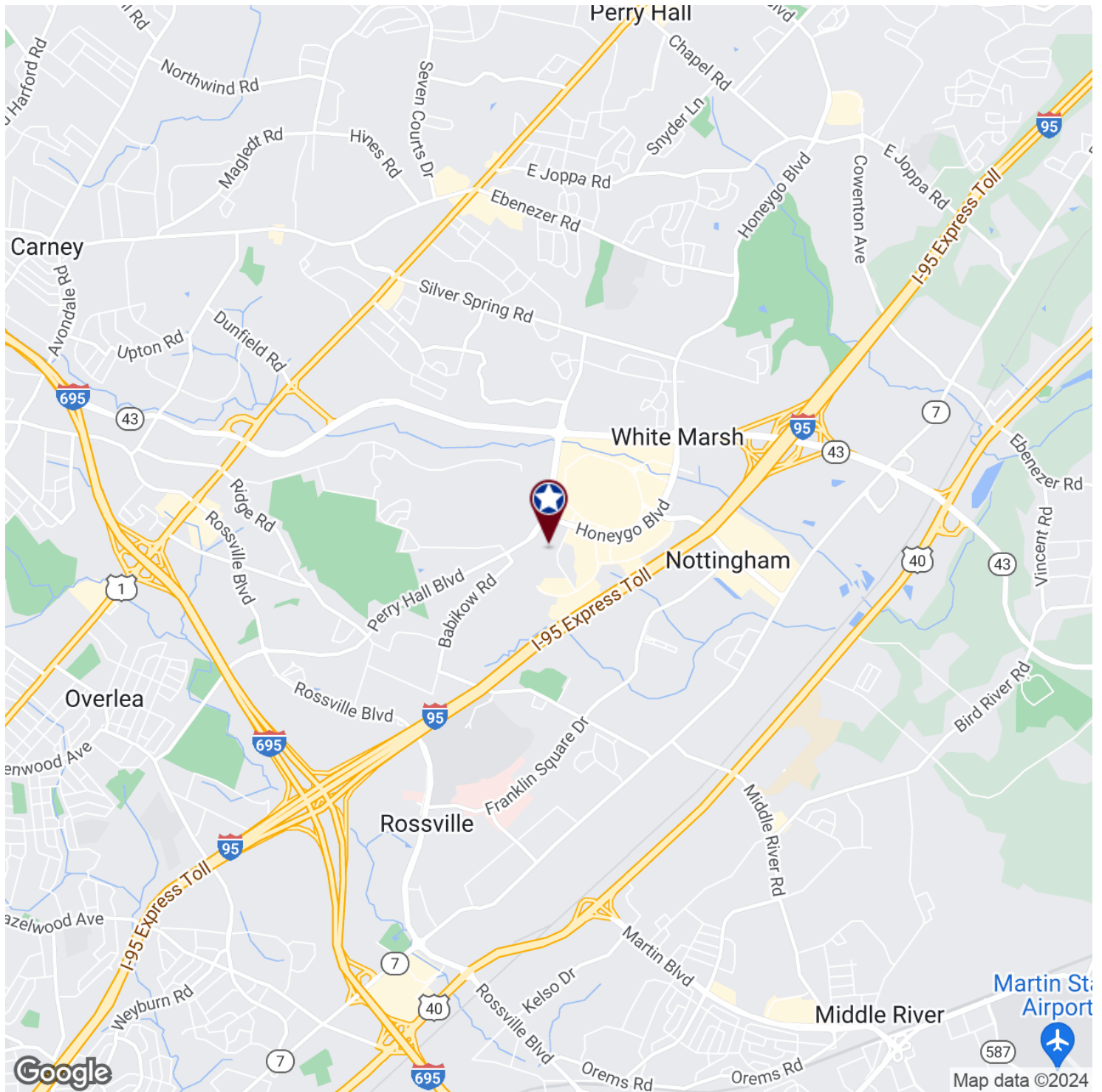
All information furnished regarding property for sale, rental or financing is from sources deemed reliable, but no warranty or representation is made to the accuracy thereof and same is submitted to errors, omissions, change of price, rental or other conditions prior to sale, lease or financing or withdrawal without notice. No liability of any kind is to be imposed on the broker herein.

PROFESSIONAL CONDO FOR SALE WHITE MARSH PROFESSIONAL CENTER

8100 Sandpiper Circle, Suite 106, Nottingham, MD 21236

Available: 2,629 SF

LEE & ASSOCIATES
COMMERCIAL REAL ESTATE SERVICES



Bill Harrison
Senior Vice President
443.741.4045
bharrison@lee-associates.com

Ben Brooks
Senior Associate
443.741.4053
bbrooks@lee-associates.com

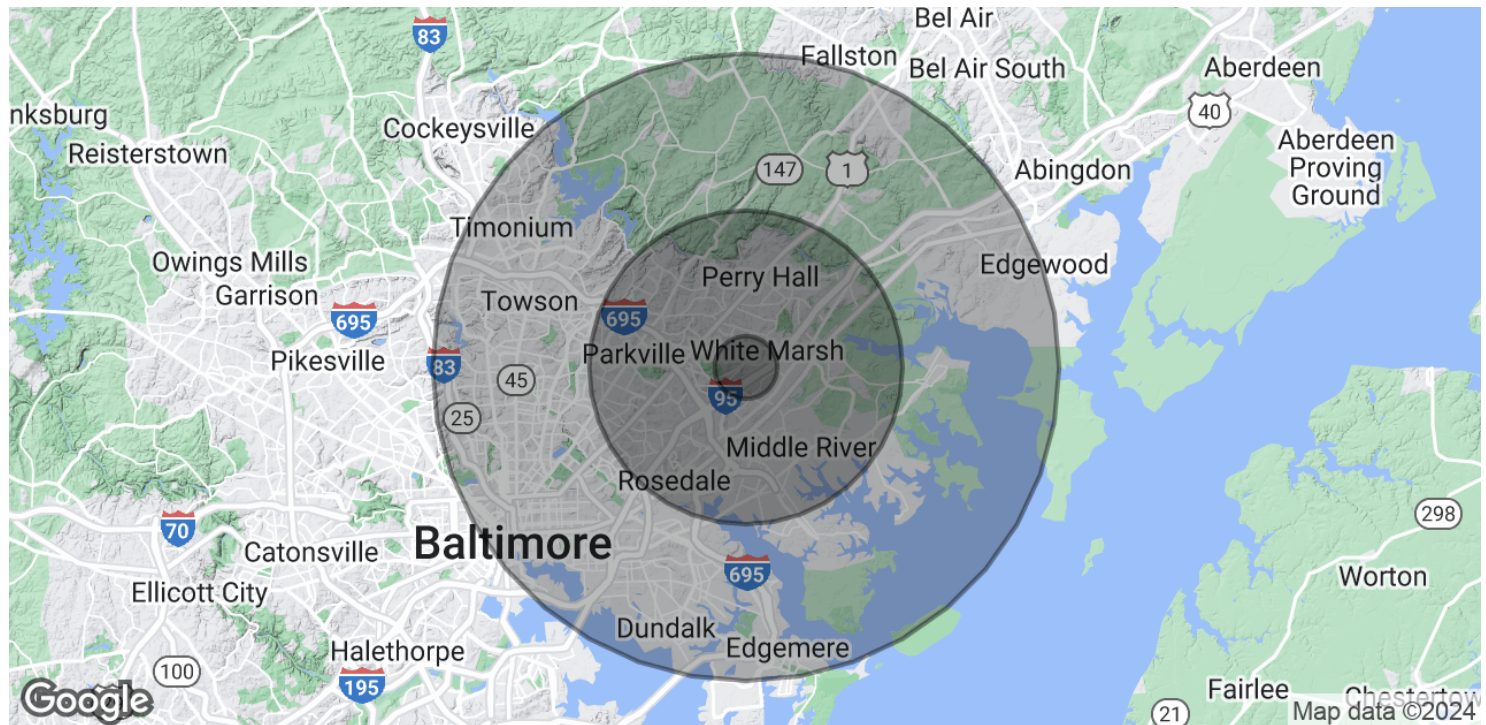
All information furnished regarding property for sale, rental or financing is from sources deemed reliable, but no warranty or representation is made to the accuracy thereof and same is submitted to errors, omissions, change of price, rental or other conditions prior to sale, lease or financing or withdrawal without notice. No liability of any kind is to be imposed on the broker herein.

PROFESSIONAL CONDO FOR SALE

WHITE MARSH PROFESSIONAL CENTER

8100 Sandpiper Circle, Suite 106, Nottingham, MD 21236

Available: 2,629 SF



POPULATION

	1 MILE	5 MILES	10 MILES
Total Population	8,172	228,154	784,177
Average Age	35.6	38.5	37.4
Average Age (Male)	34.9	36.7	35.5
Average Age (Female)	36.3	40.1	38.8

HOUSEHOLDS & INCOME

	1 MILE	5 MILES	10 MILES
Total Households	3,249	90,067	304,069
# of Persons per HH	2.5	2.5	2.6
Average HH Income	\$82,025	\$73,450	\$67,905
Average House Value	\$280,468	\$266,631	\$259,081

* Demographic data derived from 2020 ACS - US Census

Bill Harrison
Senior Vice President
443.741.4045
bharrison@lee-associates.com

Ben Brooks
Senior Associate
443.741.4053
bbrooks@lee-associates.com

All information furnished regarding property for sale, rental or financing is from sources deemed reliable, but no warranty or representation is made to the accuracy thereof and same is submitted to errors, omissions, change of price, rental or other conditions prior to sale, lease or financing or withdrawal without notice. No liability of any kind is to be imposed on the broker herein.