

NEW Sizing

Automatic

D&S

FEATURING
Power Blaster™



Until today, no other carwash system compared to the D & S 5000™ for thoroughly cleaning the vehicle. Now there's the Super 5000™, D & S' new sizing brushless automatic. The Super 5000™ is unlike anything you've ever seen. And, does it ever clean. We've taken our exclusive Power Blaster™ technology, added the ability to accurately measure the length of each vehicle and developed a simple operating system that cleans better and out performs any other sizing unit, brushless or otherwise. So turn to D & S for automatic carwash systems that measure up to the high standards of today's professional carwash operator and demanding carwash consumer.

For more information

call 800/844-3442



The 4 Cycle Wash process with exclusive Power Blaster™ technology provides maximum cleaning effectiveness.

Super Features:

Stainless Steel & Aluminum Construction

Super Gantry & Track Assembly

Oscillating Top Nozzles

Dual Revolving Side Wands

Hydraulic Design

Computer Controlled, Programmable

Infra-Red Safety Eyes

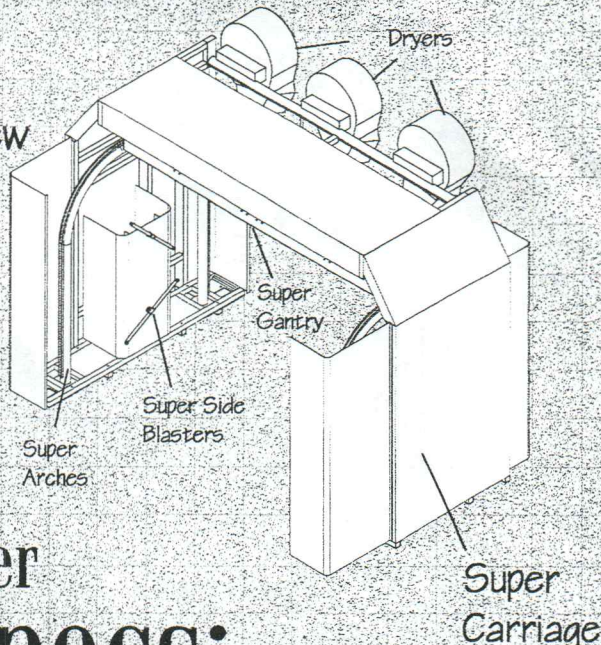
Ultrasonic Vehicle Sizing (Length)

Pneumatic Treadle

Self-Contained, 35 gpm Modular
Pump System

Super 5000™ sizing automatic
carwashes, fast lube & con

3D View



super Specs:

UNIT

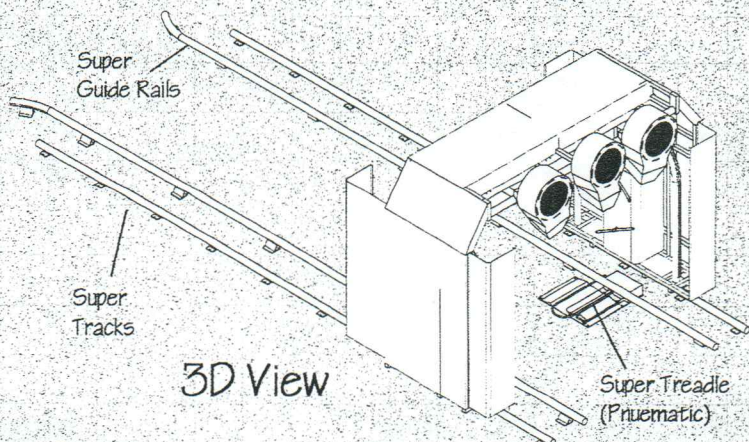
Super Tracks: 28'
Super Carriage: 12' 10" W x 9' 6" H
Maximum Height: 7'

BUILDING

Bay Length w/Dryer: 32' X 16'
Bay Height: 13'

PUMPING/CONTROL

Pump Motor: 25 h.p./ 208-230V/3ph, 60hz
Pump/Pressure: 1200 psi
Min. Water Service: 35gpm @ 50psi
Electric Service: 100 amp/3ph (min.)
225 amp/3ph (Dryer)
Air Required: 5 h.p./3ph
Equipment Room: 5' X 20' min.



3D View

TriGloss® multi-colored foaming conditioner in bright Pink, Blue and Yellow produces the ultimate in beauty, power and enhanced customer appeal.

Super Options:

Undercarriage w/Rust Inhibitor

Power Gloss® foaming clear coat

TriGloss® tri-color, foaming clearcoat

Heated Track

On-board Dryer Package

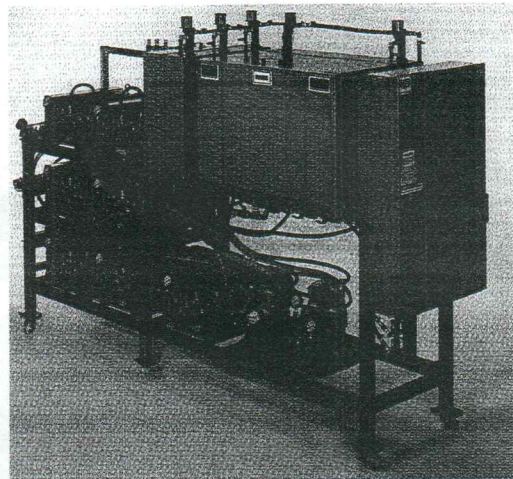
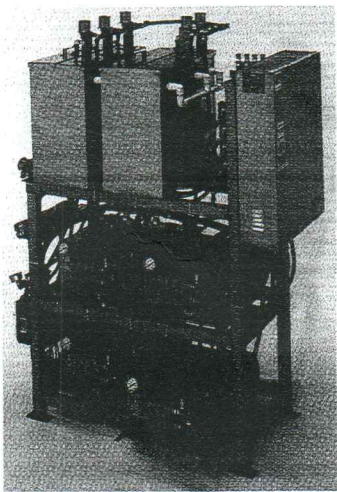
SUPER 5000®

D & S CARWASH SYSTEMS

4200 Brandi Lane\High Ridge, MO 63049

636/677-3442 636/677-4104 Fax

800/844-3442

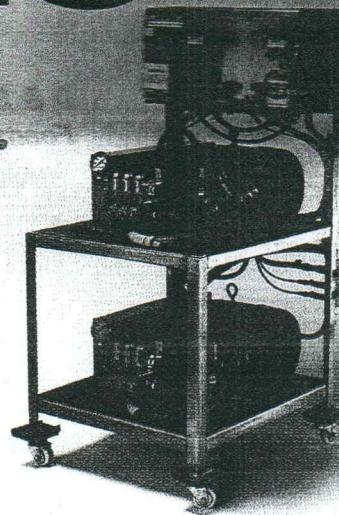


Space Saving Car Wash Systems

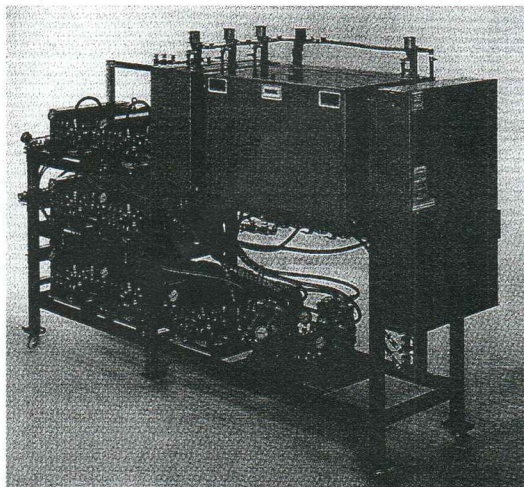


offering:

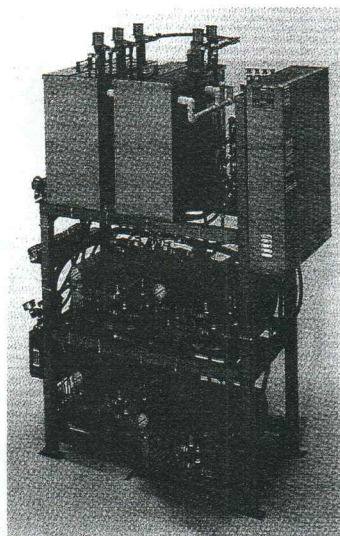
Pre-Soak, Tire & Engine Clean, Soap, Foam Brush, Rinse & Wax (Soap, Rinse & Wax on Modular Systems) from the same compact, self-contained, pre-plumbed and pre-wired pumping units.



D & S Space Saving Car Wash Systems compact design maximizes equipment room space!



D & S Stack Unit 5-12 Bays
Foaming Pre-Soak; Tire/Engine Clean;
Soap; Foam Brush; Cold Water Rinse;
Wax.



D & S Mini-Stack™ Unit 1-5 Bays
Foaming Pre-Soak; Tire/Engine Clean;
Soap; Foam Brush; Cold Water Rinse;
Wax.

Stack & Mini-Stack™

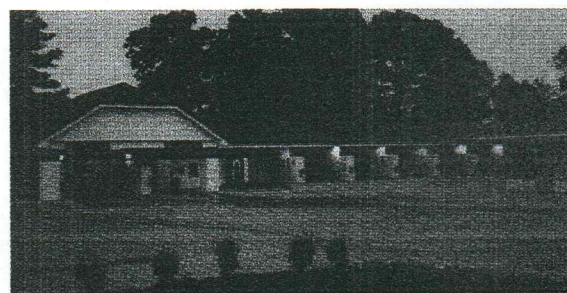
Features:

- ◆ Heavy Duty Stainless Steel Frame & Tanks w Hydrominders
- ◆ Stainless Steel Electrical Panels (Pre-wired & Tested)
- ◆ 3 phase, 5 hp Electric Motors
- ◆ Hypro or Cat Plunger Pumps
- ◆ Low Pressure Air Pump Assembly
- ◆ Individual Adjustments of detergents and wax per bay
- ◆ Cold Water Rinse System
- ◆ PVC overflow (tanks)
- ◆ Air & Pressure Regulators
- ◆ Plumbed for Weep

Options:

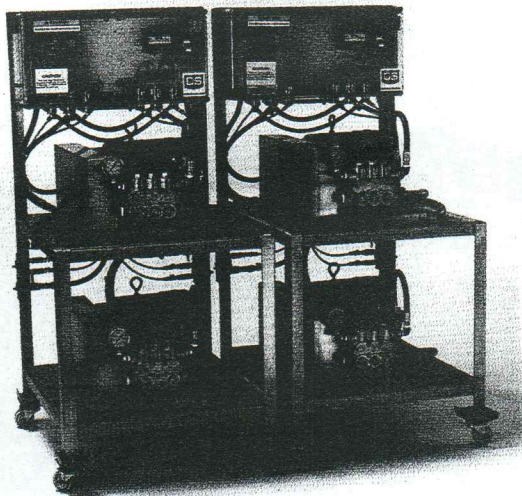
- ◆ Single Phase Wiring
- ◆ Power Gloss® Medium Pressure Wax System
- ◆ *600psi Re-Pressurization for Spot Free Rinse
- ◆ Spare Parts Kits
- ◆ ETL Listed

*Available on most systems at additional cost.



Self-service carwashes featuring D & S Space Saving Car Wash Systems generate high profits and substantial returns on investment.

Note: Pressure Ratings vary by pump manufacturer.



D & S Modular System 1-2 Bays
High Pressure Soap; Rinse, Wax.

Modular Systems

Features:

- ◆ Heavy Duty Stainless Steel Frame
- ◆ Electrical Panel (Pre-wired & Tested)
- ◆ Hypro or Cat Plunger Pumps
- ◆ 3 phase, 5 hp Electric Motors
- ◆ Cold Water Rinse System
- ◆ Bay Manifolds

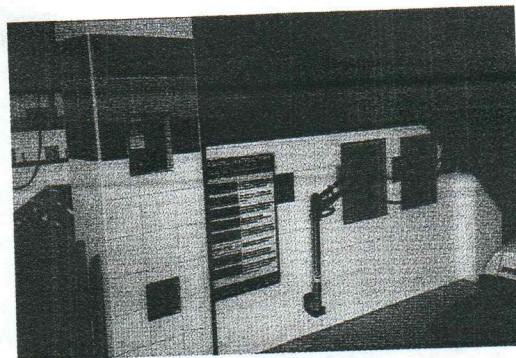
Options:

- ◆ Single Phase Wiring
- ◆ Stainless Steel Tanks
- ◆ Low Pressure Pumping Systems
- ◆ ETL Listed

Also available:

Add-A-Bay Systems

High Pressure Pumping System & Bay Pac modification for use with D & S 5000 Automatic Pumping Unit; utilizes Soap, Rinse & Wax tanks for additional self-service bay operation. Handles up to 4 Bays.



When you buy a Space Saving Car Wash System you'll get the coin meters, booms and manifolds, foaming brushes, wand holders, trigger guns and bay signs all included in one complete package.

Bay Package:

(per bay; included in price)

- ◆ S. S. 360° Spring Boom
- ◆ S. S. Foam Brush Boom
- ◆ Bay Manifolds
- ◆ Foaming Brush
- ◆ D & S Drop Coin Meter™
(back-to-back meter w/elec. coin acceptor)
- ◆ *S. S. Flex Wand Holder
- ◆ Trigger Gun & 3/8" Hose
(wire braid)
- ◆ Lexan Instruction Signs

*Optional on Mini-Stack™ & Modular.
Round or Square Safe additional.

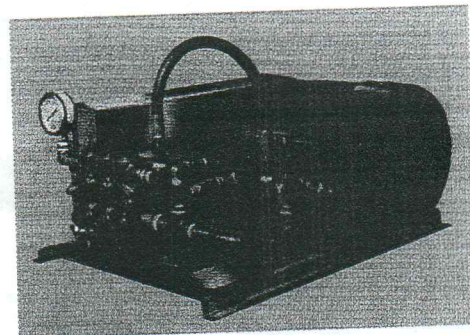


For more information call 800/844-3442!

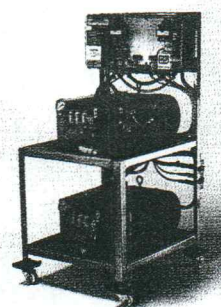
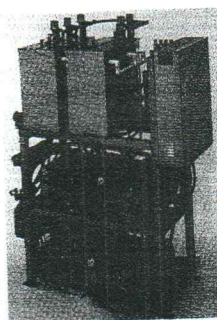
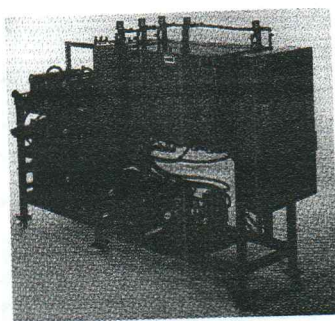
D & S Space Saving Car Wash Systems are designed with the operator in mind for ease of installation & maintenance.



**GIANT
Hypro®**



D & S car wash systems feature the industry's best high pressure pumps (your choice) mounted on a motor plate assembly that slides out for easy servicing.



Stack Units	Mini-Stack™ Units	Modular Systems
Dimensions:	Dimensions:	Dimensions:
5 Bays 30" X 107"	1 Bay 30" X 36"	1 Bay 30" X 26"
6 Bays 30" X 107"	2 Bays 30" X 59"	2 Bays 30" X 26"
7 Bays 30" X 119"	3 Bays 30" X 59"	
8 Bays 30" X 139"	4 Bays 30" X 59"	
9 Bays 30" X 139"	5 Bays 30" X 79"	
10 Bays & up (call)		

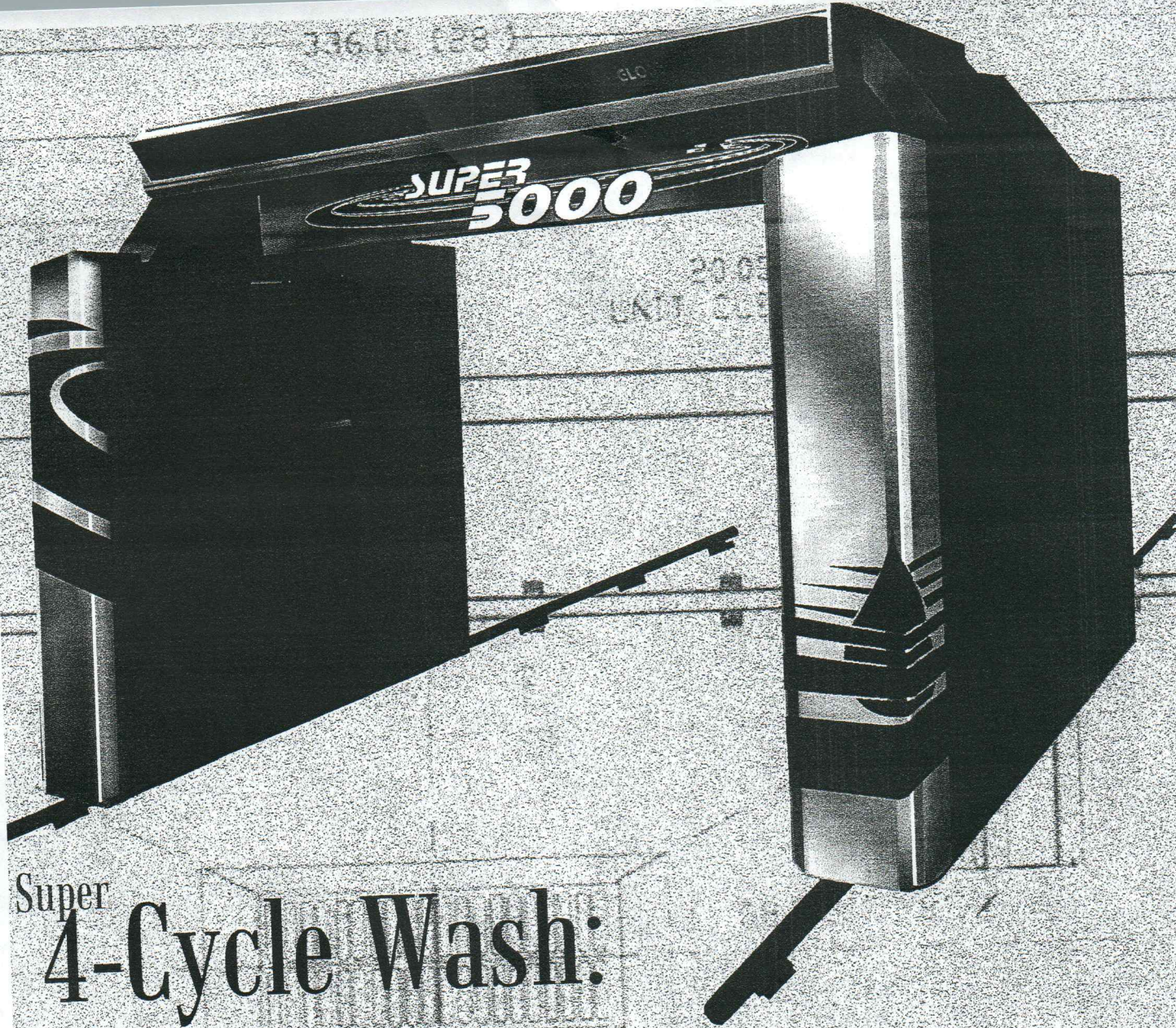
**For more information call
800/844-3442!**

Visit D & S on the internet: <http://www.carwashing.com>

Distributed by:



D & S Manufacturing Co., Inc. ♦ 4200 Brandi Ln. ♦ High Ridge, MO. 63049 ♦ 636/677-3442 Fax: 636/677-4105
© 1998, D & S Mfg. Co., Inc. All rights reserved. Mini Stack is a registered trademark of D & S Mfg Co., Inc.



Super 4-Cycle Wash:

CYCLE 1 Pre-Soak

The first cycle completely covers the vehicle with a low-pressure solution that breakdown the toughest road film, grease and grime.

CYCLE 2 Power Blaster™ Wash

The second cycle is a high-pressure mixture of Soap and Water. The additional "blast of power" from the second row of oscillating nozzles provides more thorough coverage to the front and rear of the vehicle.

Cycle 3 Power Blaster™ Rinse or Rinse w/Clear Coat

The third cycle is a high-pressure, cold water Rinse or Rinse with Clear Coat to add lustre and protection to the vehicle's finish.

Cycle 4 Spot Free Rinse

The final application is a Spot-Free Rinse which removes all deposits to prevent spotting and streaking as the vehicle dries.

carwash system for self-service
convenience store operations.

SUPER 5000™