

7TH E PROFESSIONAL PLAZA

715 E 3900 S Salt Lake City, UT 84107



Investment Realty
ADVISORS

EVAN WRYE

Vice President of Commercial Leasing
385.469.0920
evan@iraut.com

ELLIOT ABEL

President of Commercial Leasing
435.485.7070
elliot@iraut.com

Up To 380 Sf Of Office Space

PROPERTY SUMMARY

**LOCATION DESCRIPTION**

This is an excellent professional office plaza. Clean offices in a convenient location off 700 East with Excellent parking and access. Located at 715 East 3900 South, Salt Lake City, Utah, 84107.

AVAILABLE SUITE

Unit 202 features 2 rooms with an open reception/waiting area, and a large executive office behind the reception/waiting area separated by a wall and door.

OFFERING SUMMARY

Lease Rate:	\$18 Sf/yr
Lease Type:	Full Service
Number of Units	1
Available SF	380
Lot Size	1.44
Parking Ratio	3/1,000
ADA Parking Stalls	5
Total Parking Stalls	81
AADT	26,000
Lease Term	1-5 years
Available Date	3/1/2024

EVAN WRYE

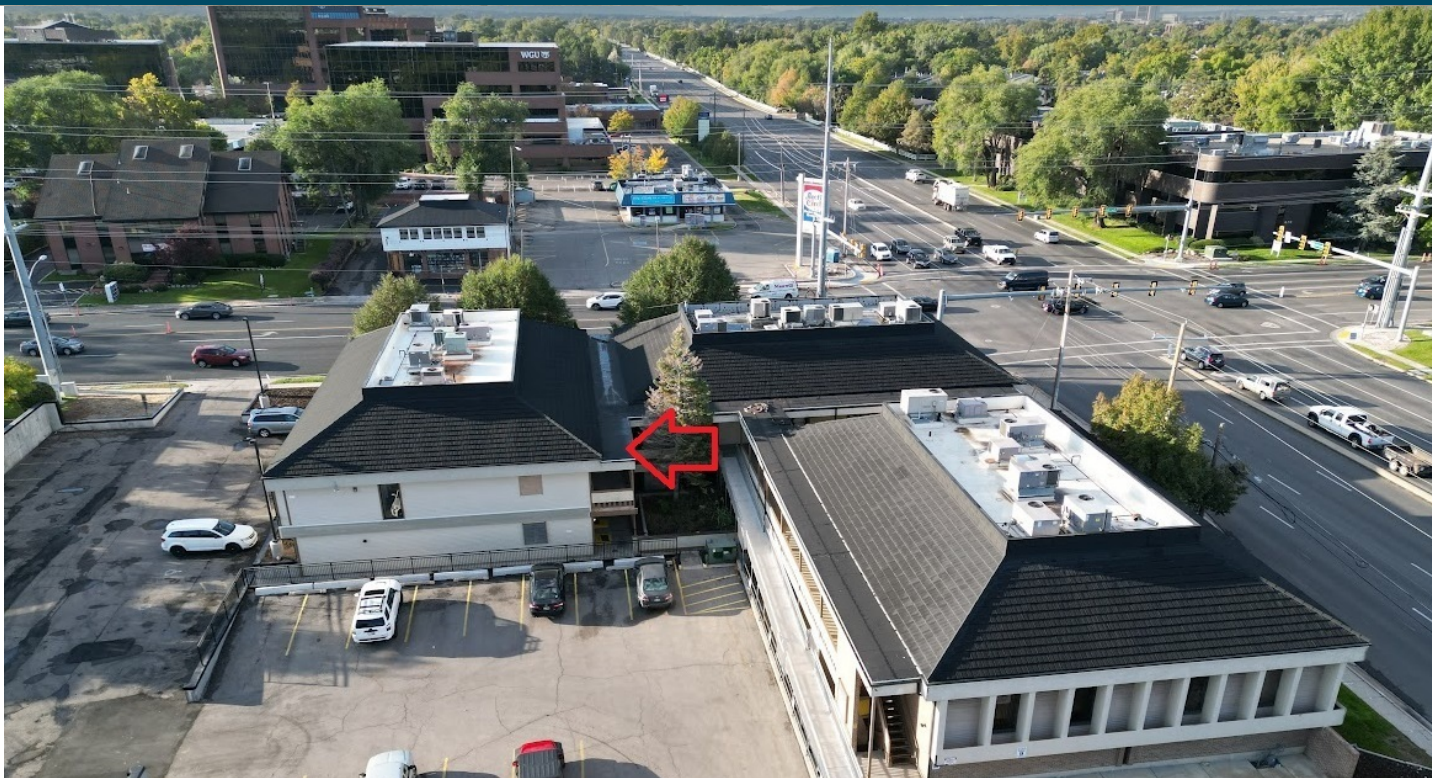
Vice President of Commercial Leasing
385.469.0920
evan@iraut.com

ELLIOT ABEL

President of Commercial Leasing
435.485.7070
elliott@iraut.com

715 E 3900 S, SALT LAKE CITY, UT 84107

SITE AND AVAILABILITY



EVAN WRYE

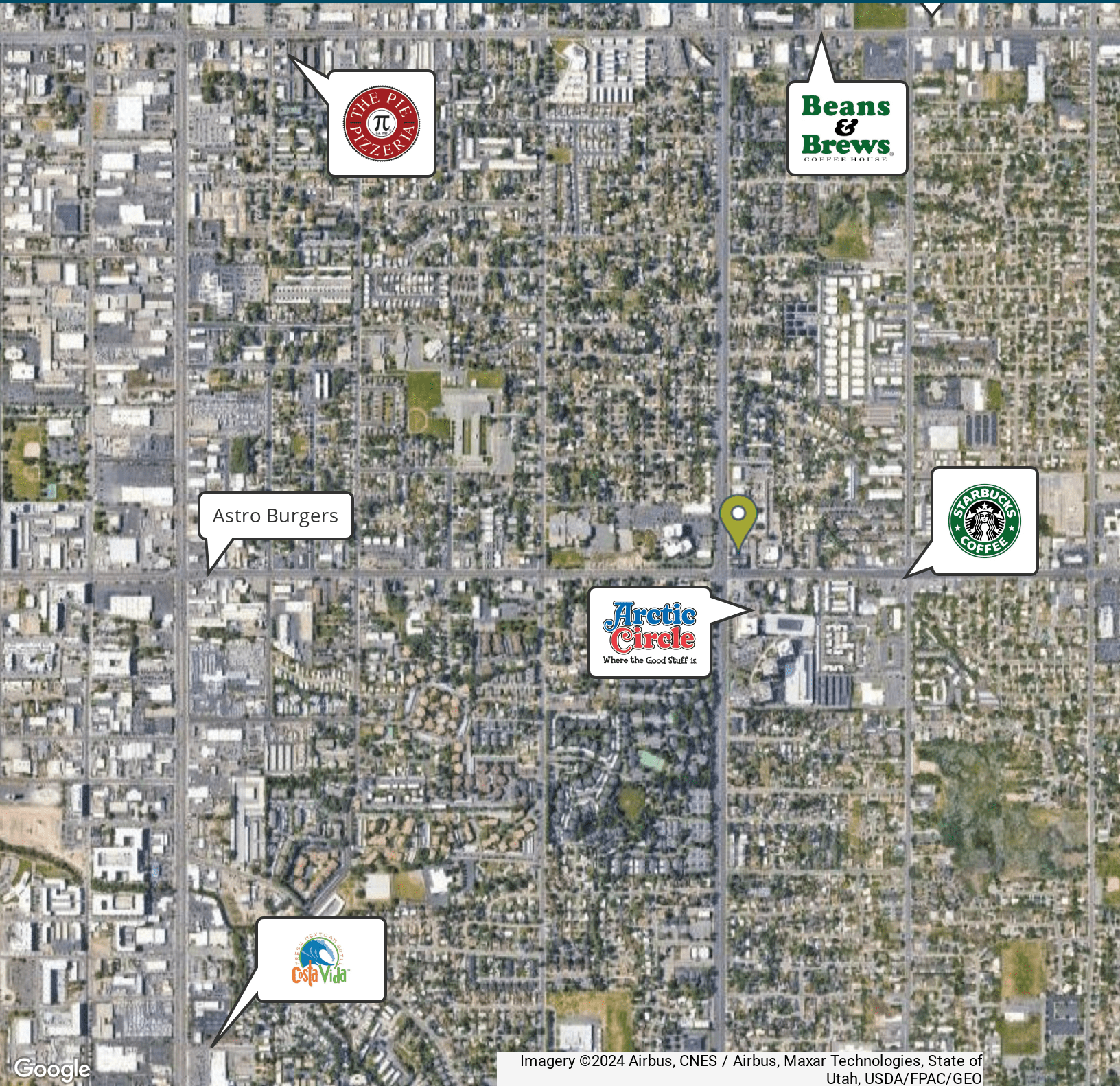
Vice President of Commercial Leasing
385.469.0920
evan@iraut.com

ELLIOT ABEL

President of Commercial Leasing
435.485.7070
elliott@iraut.com

Investment Realty Advisors
411 W 7200 S, Suite 201, Midvale, UT 84047

LOCATION MAP



EVAN WRYE

Vice President of Commercial Leasing
385.469.0920
evan@iraut.com

ELLIOT ABEL

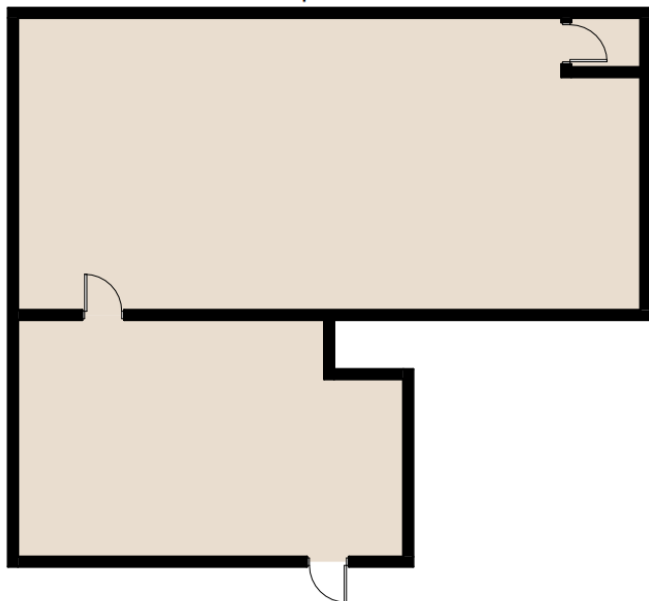
President of Commercial Leasing
435.485.7070
elliott@iraut.com

Investment Realty Advisors
411 W 7200 S, Suite 201, Midvale, UT 84047

SUITE 202 FLOOR PLAN

7th Plaza Suite 202

380 Square Feet



EVAN WRYE

Vice President of Commercial Leasing
385.469.0920
evan@iraut.com

ELLIOT ABEL

President of Commercial Leasing
435.485.7070
elliott@iraut.com

Investment Realty Advisors
411 W 7200 S, Suite 201, Midvale, UT 84047