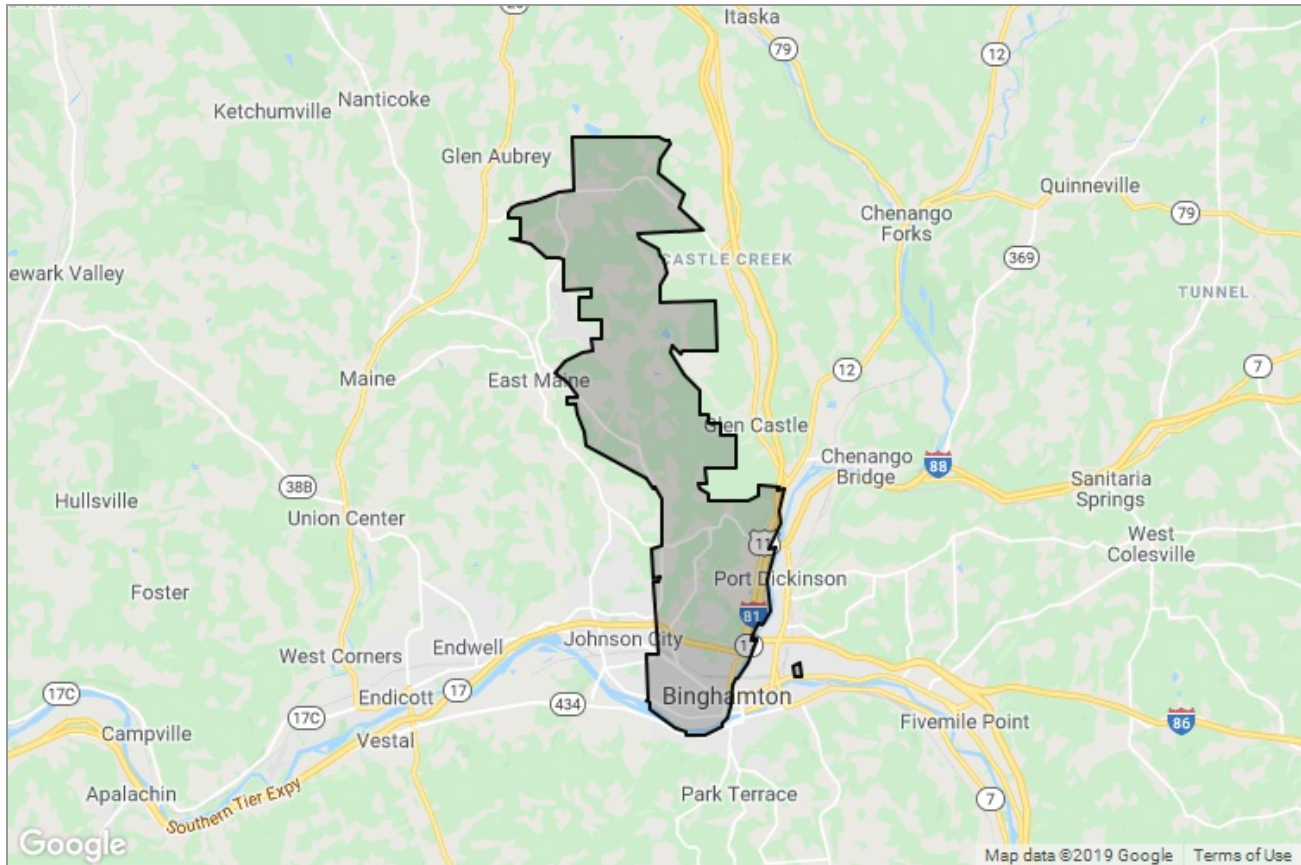




"The Best in the Business"

## COMMERCIAL BEST BUSINESSES REPORT

# Binghamton, NY 13905



Presented by

**Scott Warren** | REALTOR®

Work: (607) 621-0439 | Mobile: (607) 621-0439 | Fax: (607) 754-7826 | Fax: (607) 754-7826

Main: [scottwarrencre@gmail.com](mailto:scottwarrencre@gmail.com) | Other 1: [bwarren@warrenhomes.com](mailto:bwarren@warrenhomes.com)

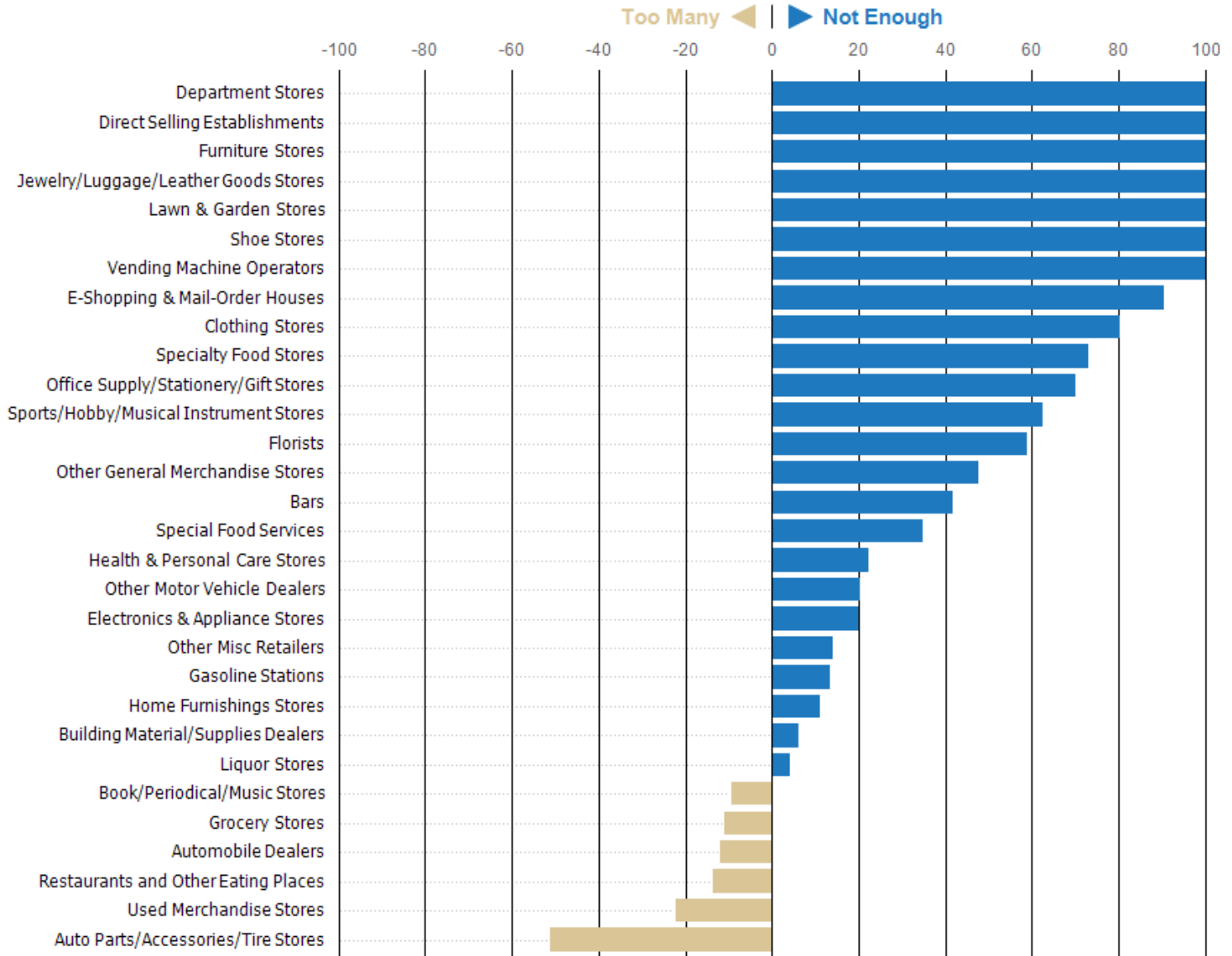
**Warren Real Estate**  
3456 Vestal Parkway East  
Vestal, NY 13850

## Best Retail Businesses: Binghamton, NY 13905

This chart shows the types of businesses that consumers are leaving an area to find. The business types represented by blue bars are relatively scarce in the area, so consumers go elsewhere to have their needs met. The beige business types are relatively plentiful in the area, meaning there are existing competitors for the dollars that consumers spend in these categories.

Data Source: Retail Marketplace via Esri, 2018

Update Frequency: Annually



## About RPR (Realtors Property Resource)

- Realtors Property Resource® is a wholly owned subsidiary of the National Association REALTORS®.
- RPR offers comprehensive data – including a nationwide database of 164 million properties – as well as powerful analytics and dynamic reports exclusively for members of the NAR.
- RPR's focus is giving residential and commercial real estate practitioners, brokers, and MLS and Association staff the tools they need to serve their clients.
- This report has been provided to you by a member of the NAR.



## About RPR's Data

RPR generates and compiles real estate and other data from a vast array of sources. The data contained in your report includes some or all of the following:

- **Listing data** from our partner MLSs and CIEs, and related calculations, like estimated value for a property or median sales price for a local market.
- **Public records data** including tax, assessment, and deed information. Foreclosure and distressed data from public records and RealtyTrac.
- **Market conditions and forecasts** based on listing and public records data.
- **Census and employment data** from the U.S. Census and the U.S. Bureau of Labor Statistics.
- **Demographics and trends data** from Esri. The data in commercial and economic reports includes Tapestry Segmentation, which classifies U.S. residential neighborhoods into unique market segments based on socioeconomic and demographic characteristics.
- **Business data** including consumer expenditures, commercial market potential, retail marketplace, SIC and NAICS business information, and banking potential data from Esri.
- **School data and reviews** from Niche.
- **Specialty data sets** such as walkability scores, traffic counts and flood zones.



## Update Frequency

- Listings and public records data are updated on a continuous basis.
- Charts and statistics calculated from listing and public records data are refreshed monthly.
- Other data sets range from daily to annual updates.

## Learn more

For more information about RPR, please visit RPR's public website: <http://blog.narrpr.com>