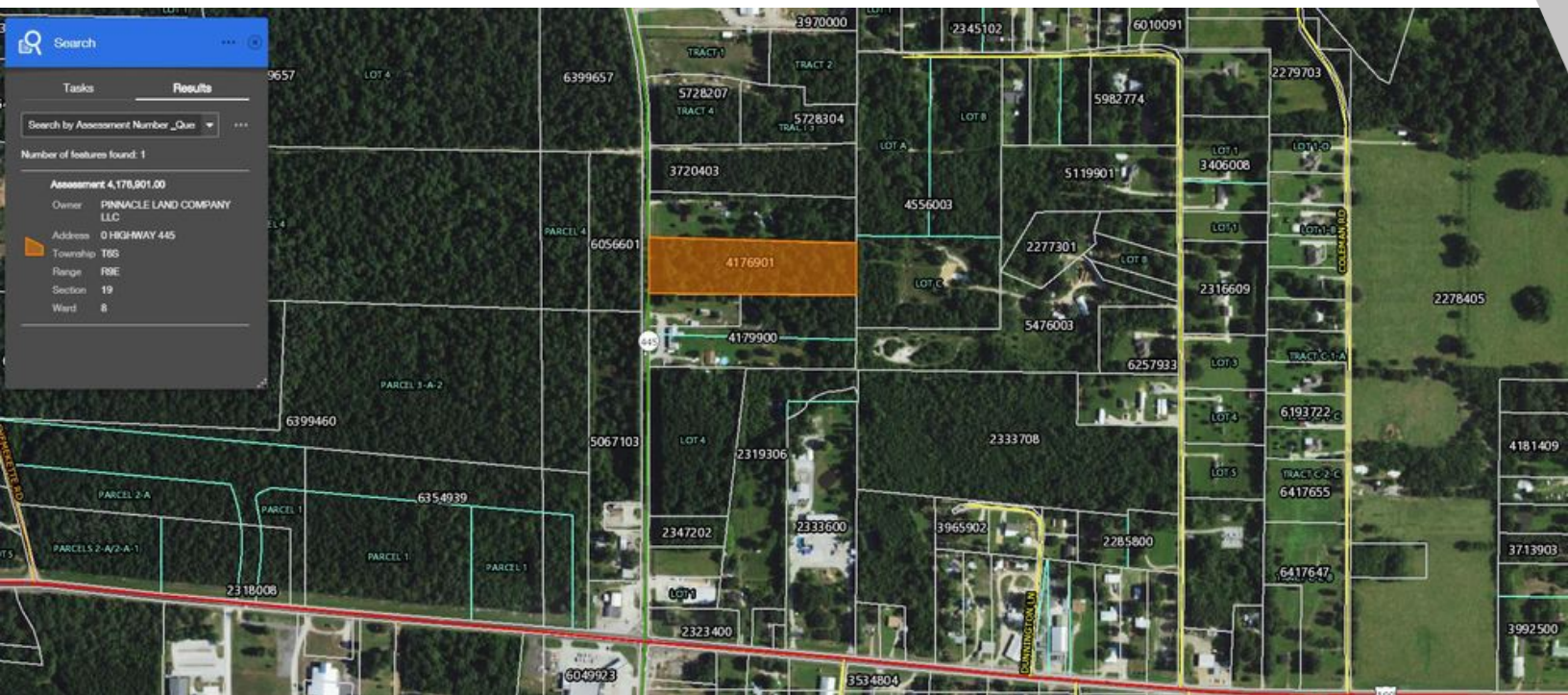


LAND FOR SALE

3.97 ACRES ON HIGHWAY 445

Highway 445 (LA-445), Robert, LA 70445



SALE PRICE: \$165,000

LOT SIZE: 3.97 Acres

LOT DIMENSIONS: 230 X 849 X 211 X 850

ZONING: Unknown

CROSS STREETS: Hwy 190

BROCHURE DATE: 12/14/17

PROPERTY OVERVIEW

3.97-acre parcel located in the vicinity of the Wal-Mart distribution center and Southeastern Louisiana University. Property has city water, gas, and electric available. Many potential uses in an area that is growing rapidly. Priced to sell!

PROPERTY FEATURES

- 3.97-acre parcel in Robert
- City water, gas, and electric available
- Lots of potential uses: commercial, industrial, retail, multi-family, residential
- Growing area

KW COMMERCIAL
1522 W. Causeway Approach
Mandeville, LA 70471

LIZBY EUSTIS
CCIM, Each Office Independently Owned & Operated
985.966.2712
leustis@att.net
LA #Licensed In LA

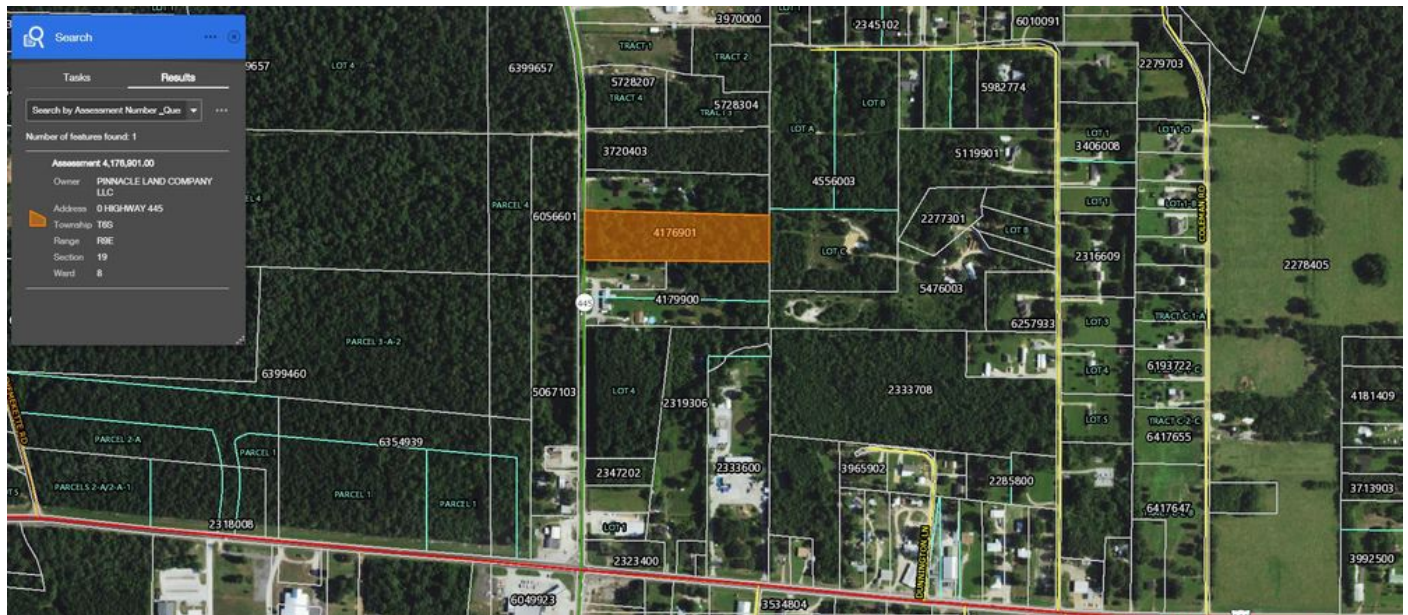
We obtained the information above from sources we believe to be reliable. However, we have not verified its accuracy and make no guarantee, warranty or representation about it. It is submitted subject to the possibility of errors, omissions, change of price, rental or other conditions, prior sale, lease or financing, or withdrawal without notice. We include projections, opinions, assumptions or estimates for example only, and they may not represent current or future performance of the property. You and your tax and legal advisors should conduct your own investigation of the property and transaction.

www.kwcommercial.com

LAND FOR SALE

3.97 ACRES ON HIGHWAY 445

Highway 445 (LA-445), Robert, LA 70445



KW COMMERCIAL
1522 W. Causeway Approach
Mandeville, LA 70471

LIZBY EUSTIS
CCIM, Each Office Independently Owned & Operated
985.966.2712
leustis@att.net
LA #Licensed In LA

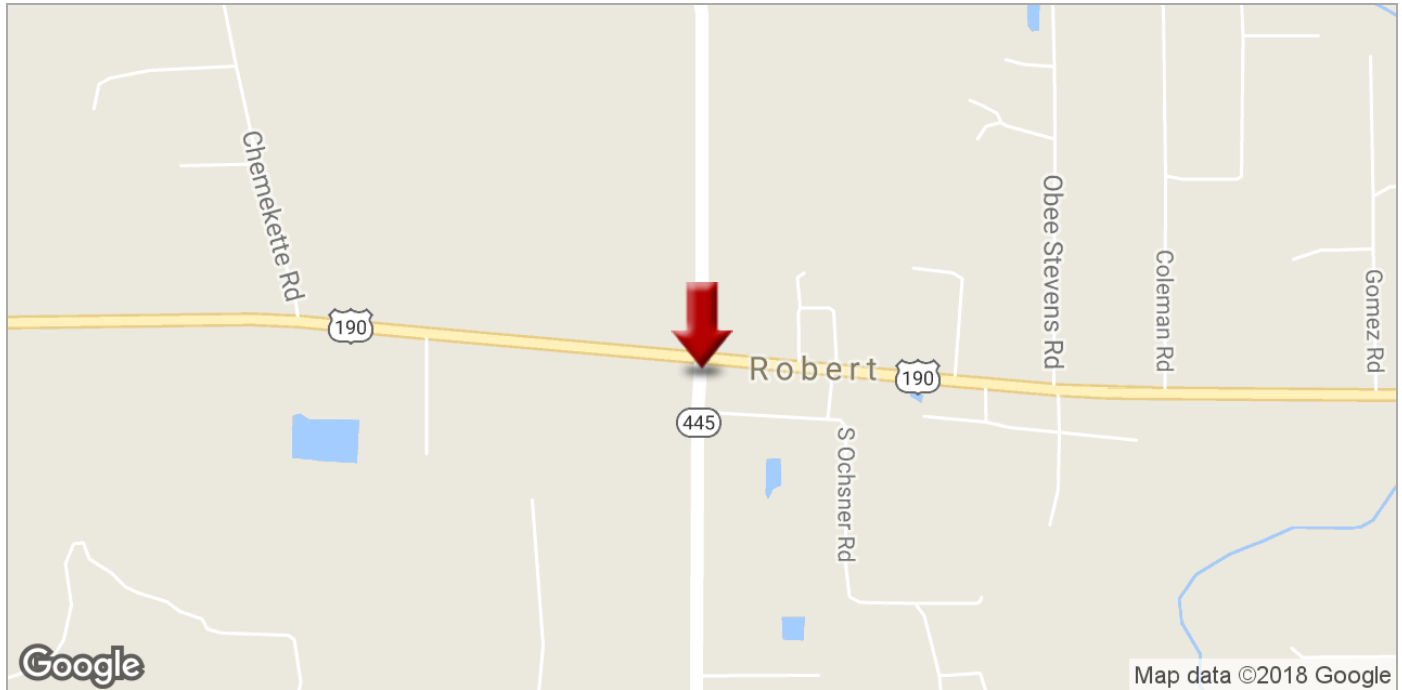
We obtained the information above from sources we believe to be reliable. However, we have not verified its accuracy and make no guarantee, warranty or representation about it. It is submitted subject to the possibility of errors, omissions, change of price, rental or other conditions, prior sale, lease or financing, or withdrawal without notice. We include projections, opinions, assumptions or estimates for example only, and they may not represent current or future performance of the property. You and your tax and legal advisors should conduct your own investigation of the property and transaction.

www.kwcommercial.com

LAND FOR SALE

3.97 ACRES ON HIGHWAY 445

Highway 445 (LA-445), Robert, LA 70445



KW COMMERCIAL
1522 W. Causeway Approach
Mandeville, LA 70471

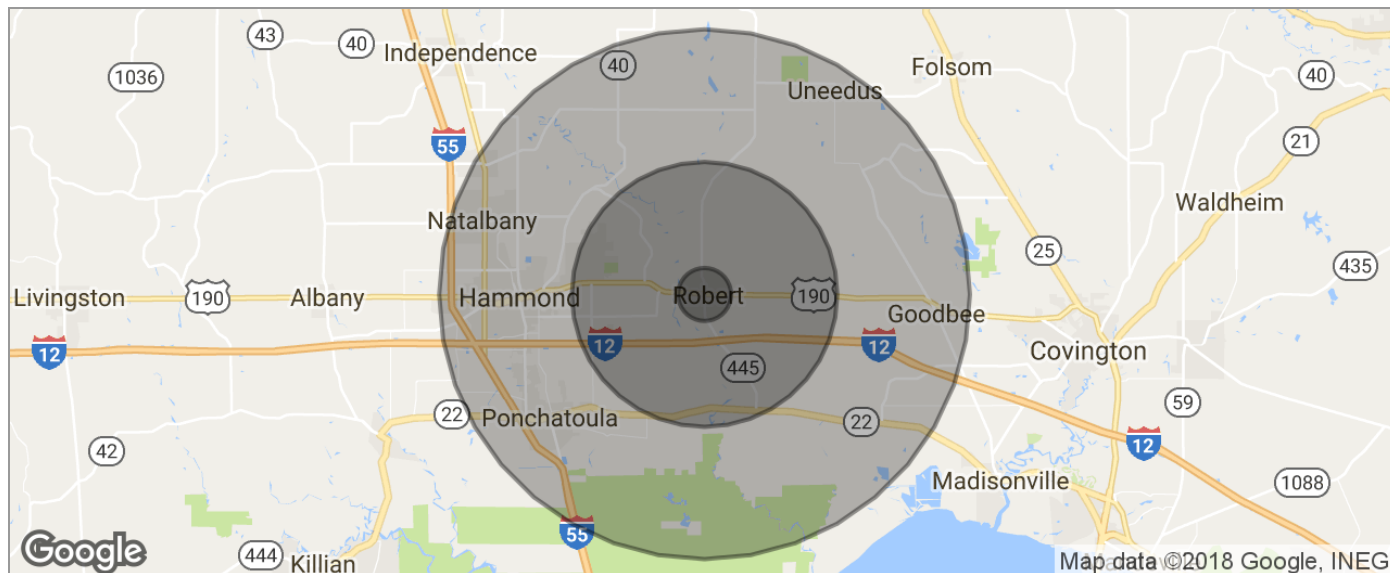
LIZBY EUSTIS
CCIM, Each Office Independently Owned & Operated
985.966.2712
leustis@att.net
LA #Licensed In LA

We obtained the information above from sources we believe to be reliable. However, we have not verified its accuracy and make no guarantee, warranty or representation about it. It is submitted subject to the possibility of errors, omissions, change of price, rental or other conditions, prior sale, lease or financing, or withdrawal without notice. We include projections, opinions, assumptions or estimates for example only, and they may not represent current or future performance of the property. You and your tax and legal advisors should conduct your own investigation of the property and transaction.

www.kwcommercial.com

3.97 ACRES ON HIGHWAY 445

Highway 445 (LA-445), Robert, LA 70445



POPULATION	1 MILE	5 MILES	10 MILES
TOTAL POPULATION	223	8,549	58,853
MEDIAN AGE	36.6	35.6	33.1
MEDIAN AGE (MALE)	37.0	34.4	32.4
MEDIAN AGE (FEMALE)	36.0	36.2	33.6
HOUSEHOLDS & INCOME	1 MILE	5 MILES	10 MILES
TOTAL HOUSEHOLDS	76	2,999	21,466
# OF PERSONS PER HH	2.9	2.9	2.7
AVERAGE HH INCOME	\$56,631	\$71,360	\$58,941
AVERAGE HOUSE VALUE	\$183,369	\$174,619	\$163,750
RACE	1 MILE	5 MILES	10 MILES
% WHITE	93.3%	83.4%	71.1%
% BLACK	4.9%	15.2%	25.9%
% ASIAN	0.0%	0.0%	0.8%
% HAWAIIAN	0.0%	0.0%	0.0%
% INDIAN	0.0%	0.0%	0.1%
% OTHER	0.0%	0.1%	1.0%
ETHNICITY	1 MILE	5 MILES	10 MILES
% HISPANIC	1.3%	1.8%	3.4%

* Demographic data derived from 2010 US Census

KW COMMERCIAL
1522 W. Causeway Approach
Mandeville, LA 70471

LIZBY EUSTIS
CCIM, Each Office Independently Owned & Operated
985.966.2712
leustis@att.net
LA #Licensed In LA

We obtained the information above from sources we believe to be reliable. However, we have not verified its accuracy and make no guarantee, warranty or representation about it. It is submitted subject to the possibility of errors, omissions, change of price, rental or other conditions, prior sale, lease or financing, or withdrawal without notice. We include projections, opinions, assumptions or estimates for example only, and they may not represent current or future performance of the property. You and your tax and legal advisors should conduct your own investigation of the property and transaction.

www.kwcommercial.com