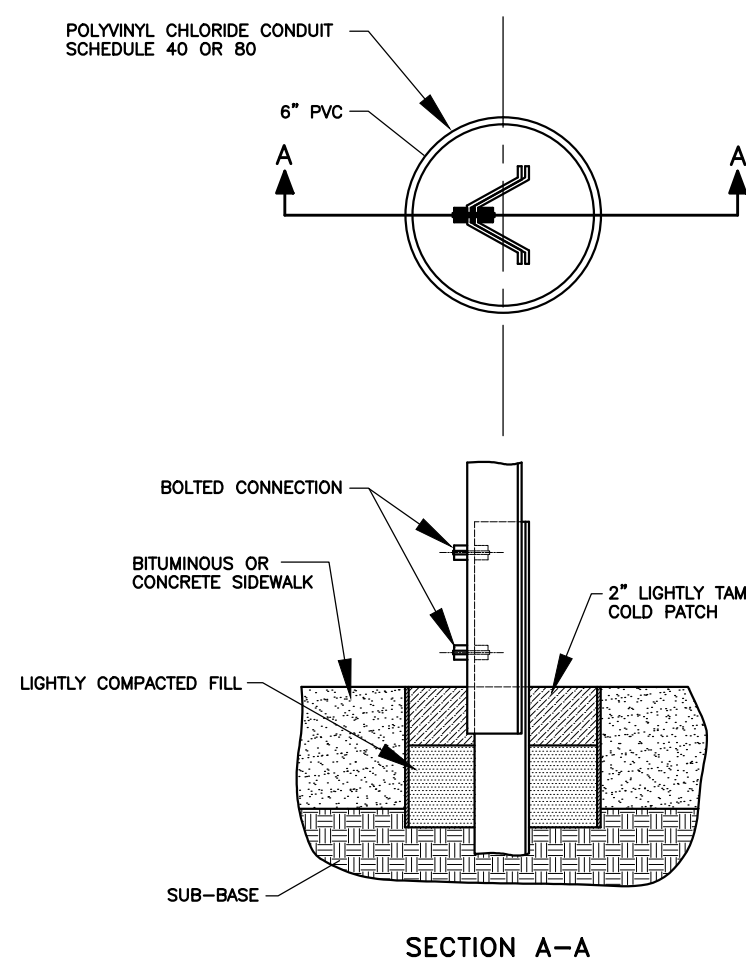
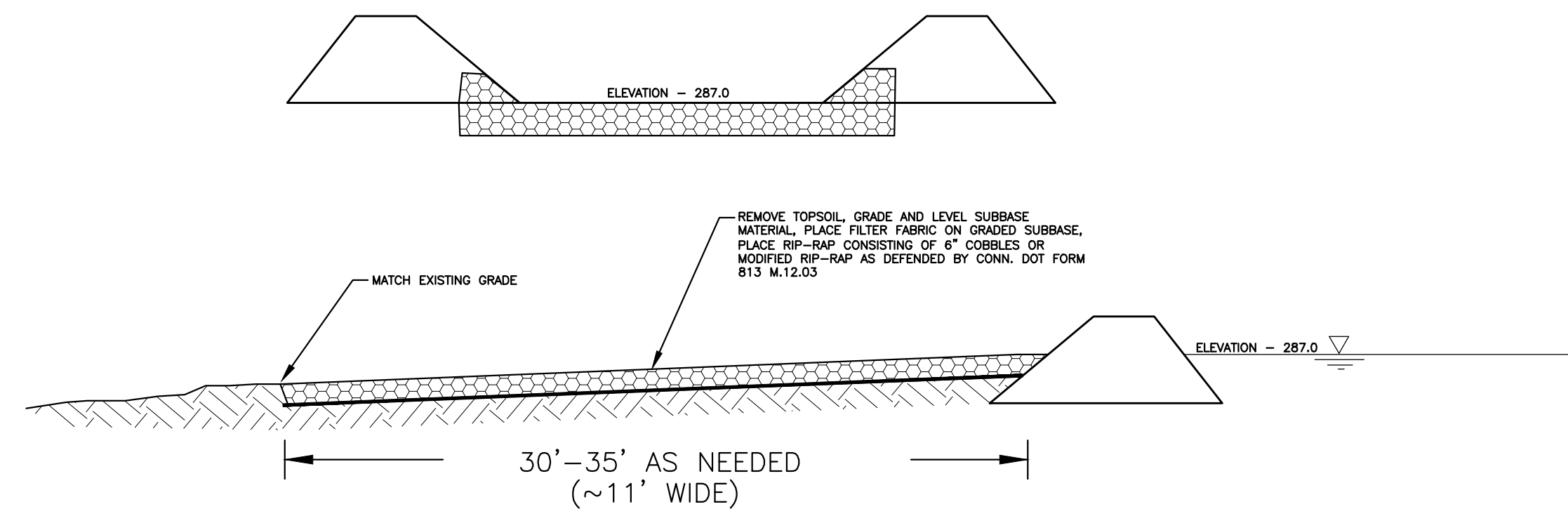


**SIGN DETAILS**  
NOT TO SCALE



**SIGN POST DETAIL**  
NO SCALE

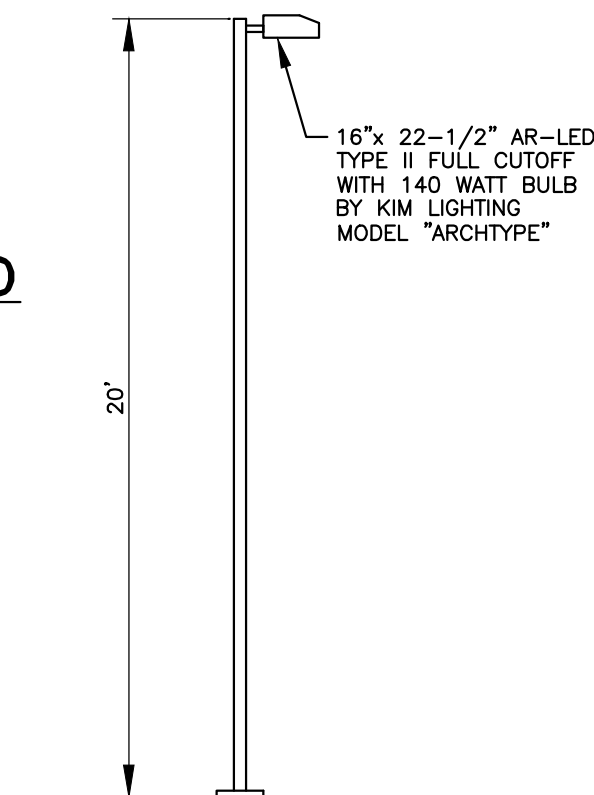


**DETENTION BASIN SPILLWAY OUTLET DETAIL**  
NOT TO SCALE

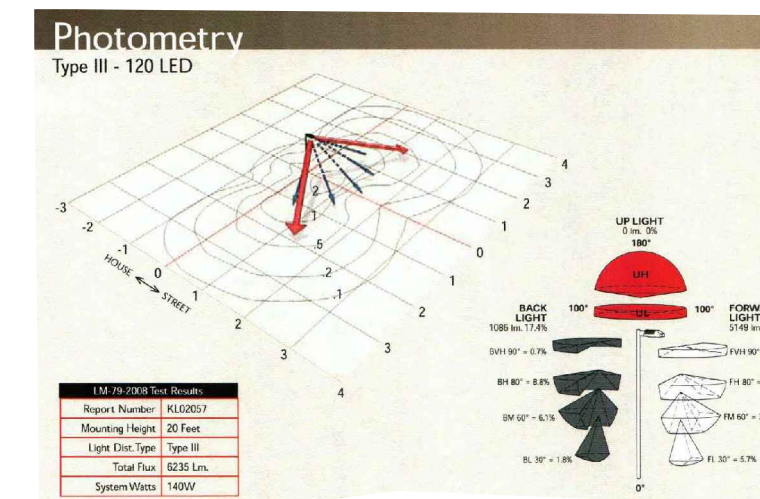
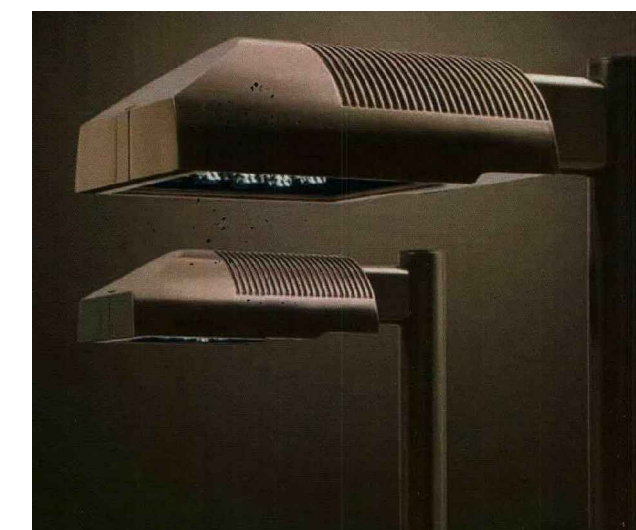


KIM LIGHTING - IW/AR3/120L3K120/PS/A-30

**WALL MOUNTED FLOOD LIGHT FIXTURE**  
NOT TO SCALE

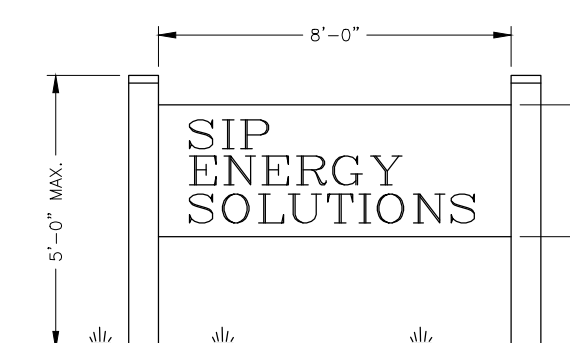


**POLE LIGHT DETAIL**  
NOT TO SCALE



KIM LIGHTING - WD14-D3/60L3K120/PS/A-30

**WALL MOUNTED OVERHEAD LIGHT FIXTURE**  
NOT TO SCALE



**SIGN DETAIL**  
NOT TO SCALE



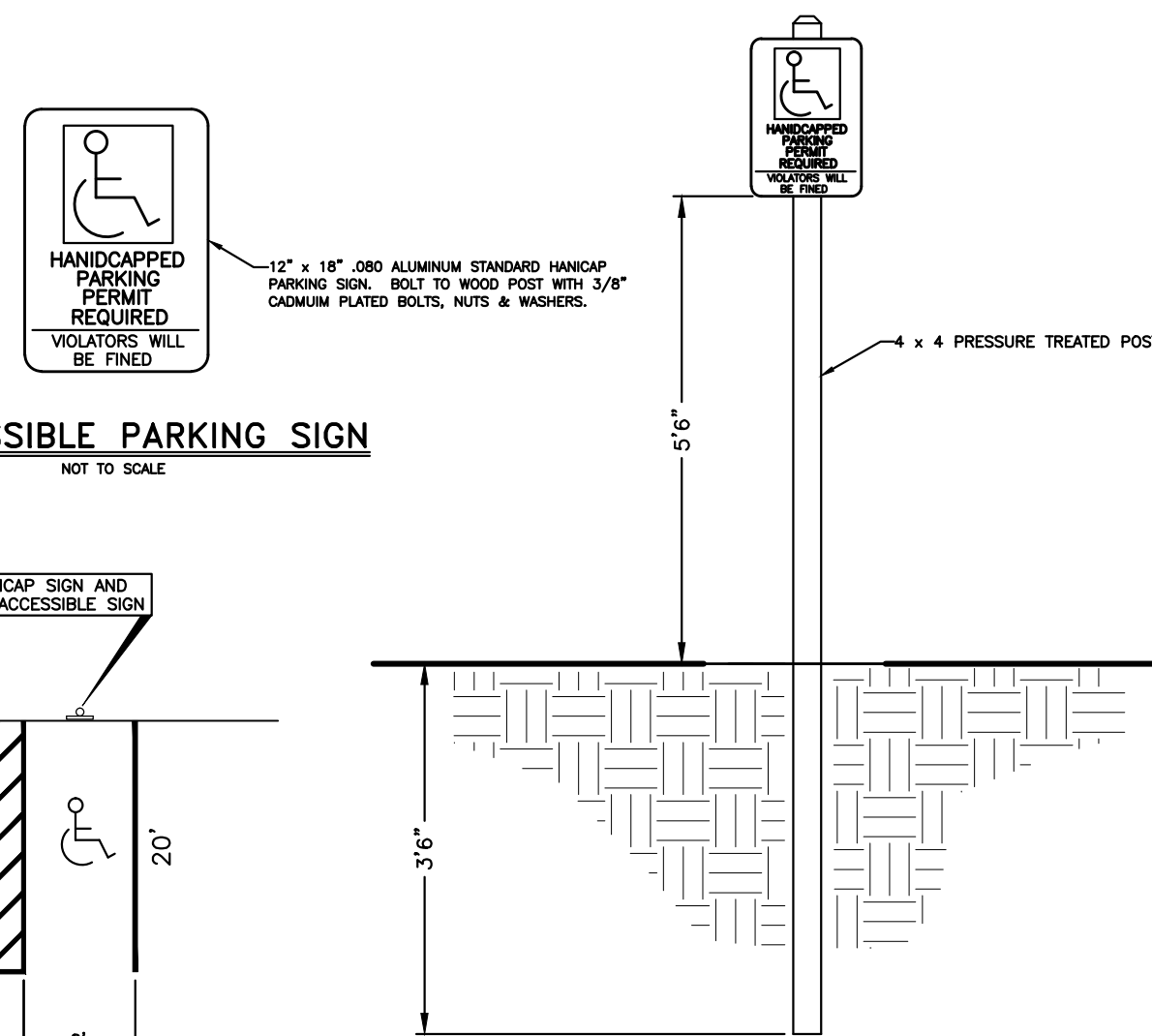
KIM LIGHTING - CFL6/27L3KUV/PS/FS-CFL-PS/UBR-3

**UPLIGHTING ON FRONT LIGHT FIXTURE**  
NOT TO SCALE



KIM LIGHTING - WD14-D3/60L3K120/PS/A-30

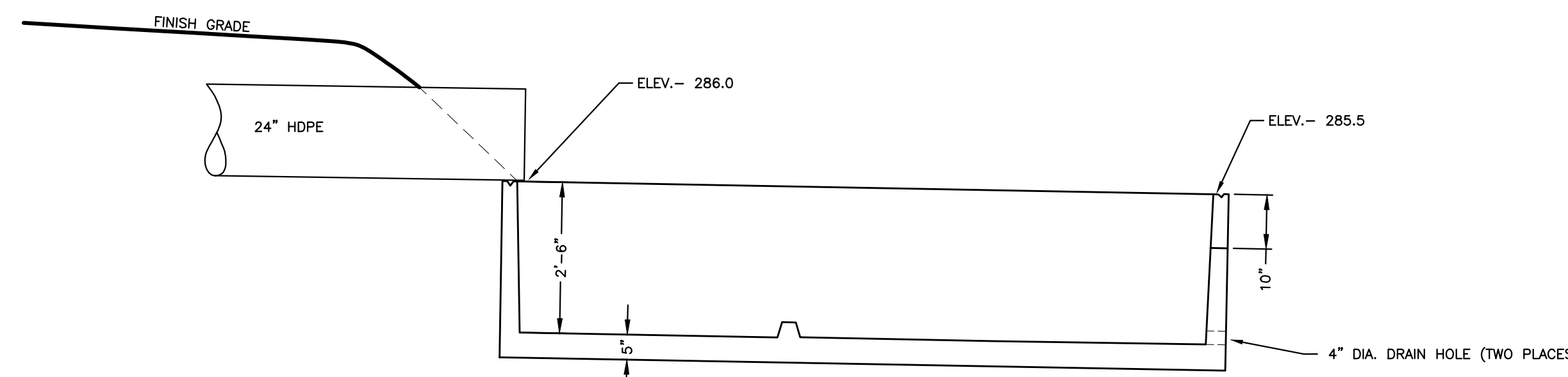
**WALL MOUNTED OVERHEAD LIGHT FIXTURE**  
NOT TO SCALE



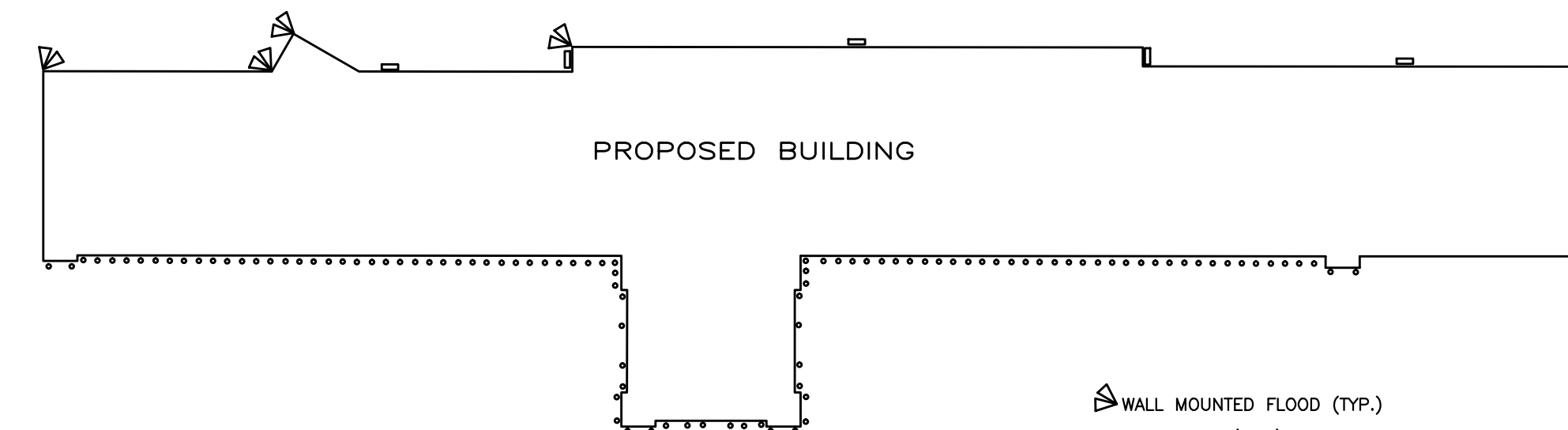
**ACCESSIBLE PARKING SIGN**  
NOT TO SCALE

**VAN ACCESSIBLE HANDICAP PARKING SPACE DETAIL**

**ACCESSIBLE PARKING SIGN**  
NOT TO SCALE

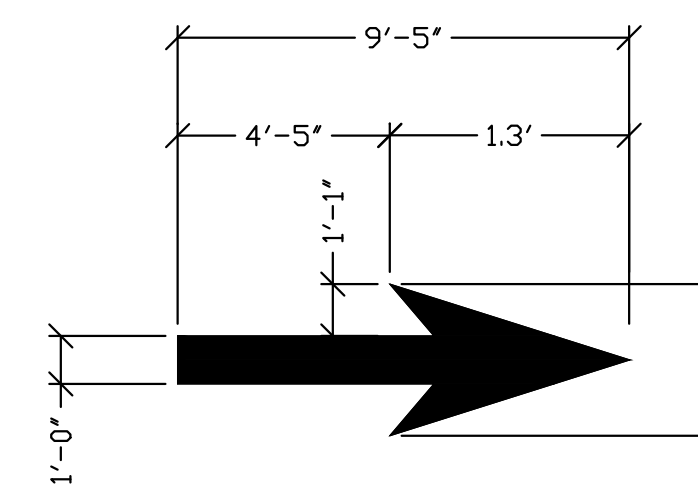


**DETENTION BASIN INLET STRUCTURE**  
JOLLEY PRECAST, INC. 2000 GALLON SINGLE COMPARTMENT TANK BASE  
NOT TO SCALE

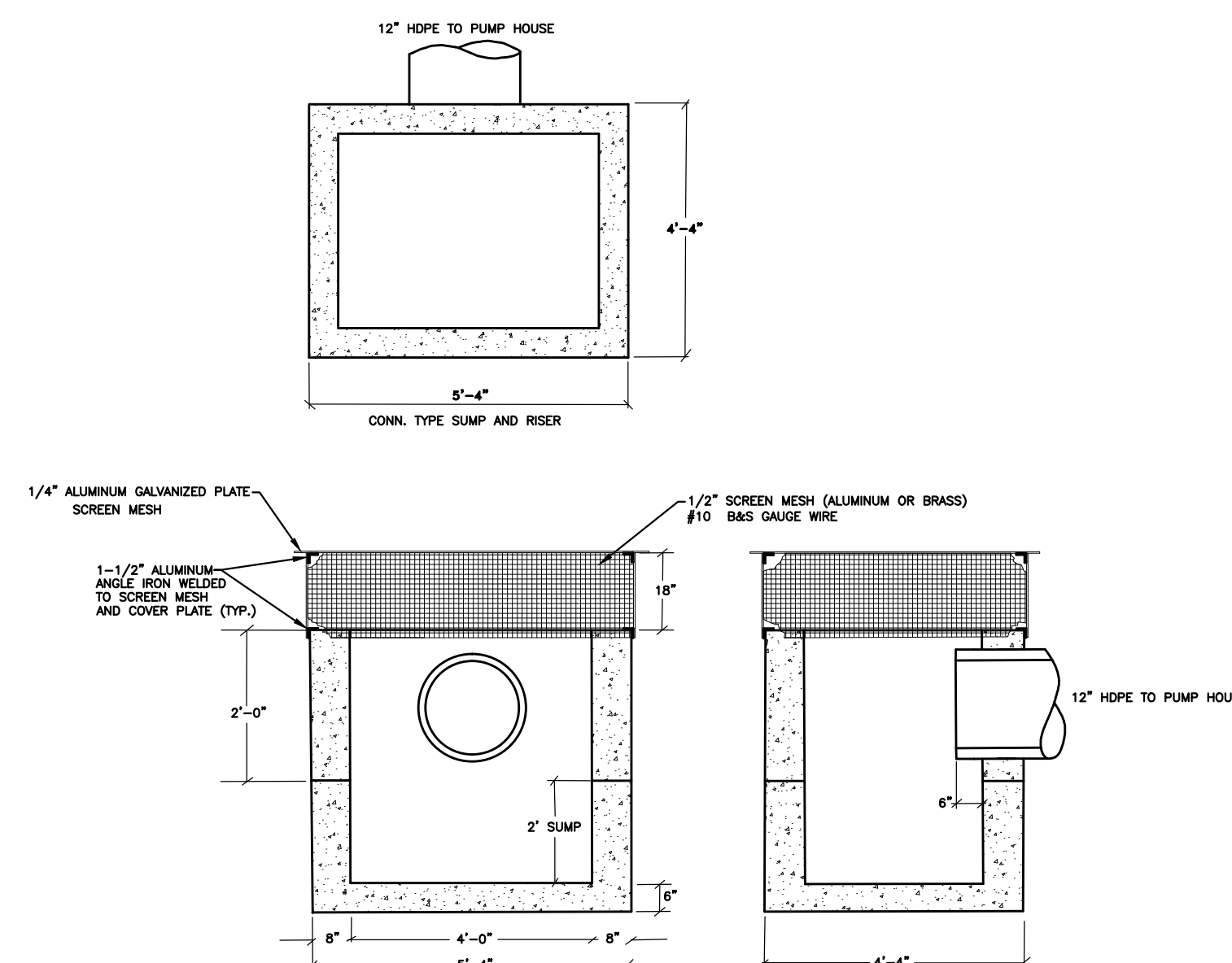


**LIGHTING LAYOUT**  
NOT TO SCALE

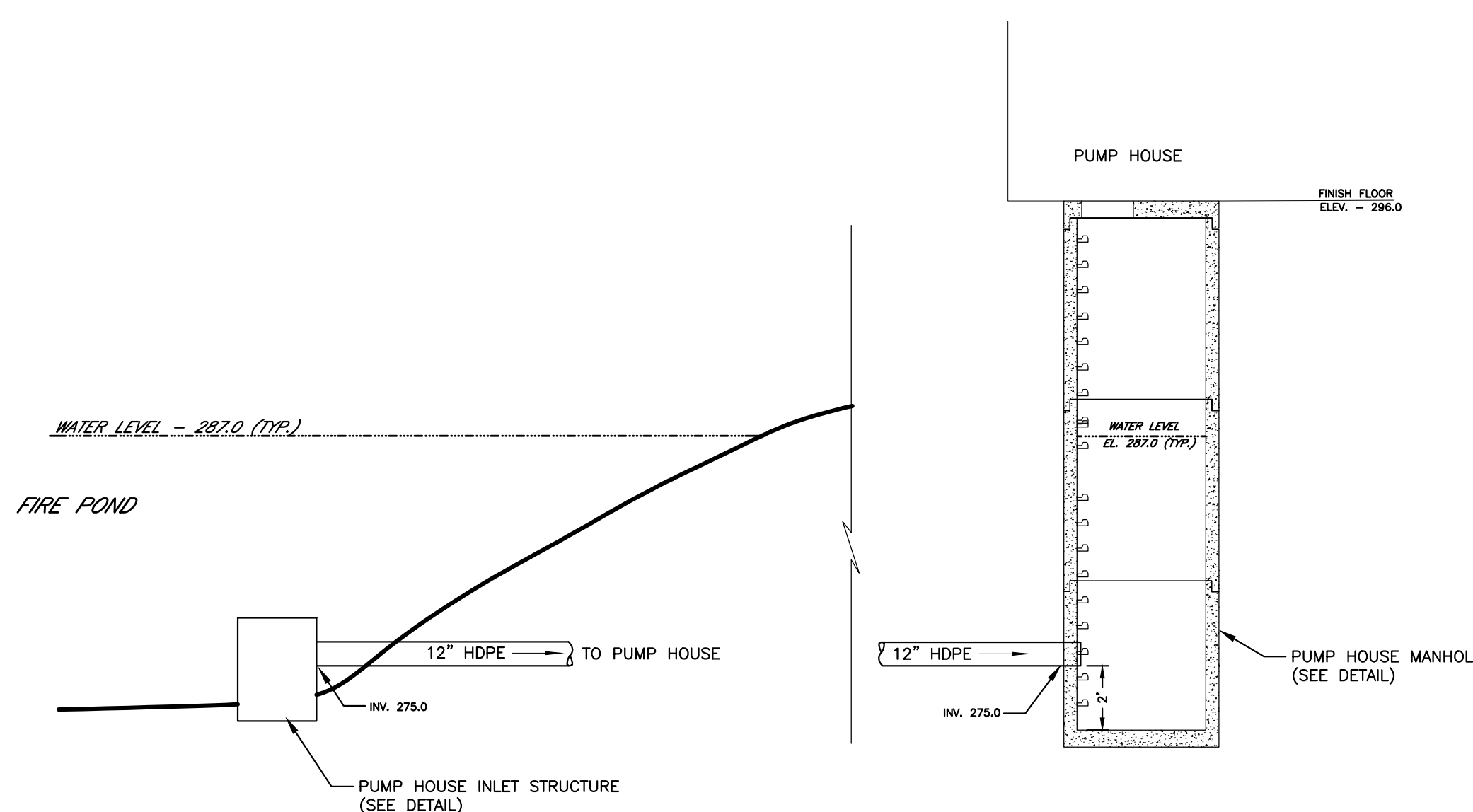
- WALL MOUNTED FLOOD (TYP.)
- UPLIGHTING (TYP.)
- WALL MOUNTED OVERHEAD LIGHTING (TYP.)



**PAVEMENT ARROW DETAIL**  
NOT TO SCALE



**PUMP HOUSE INLET STRUCTURE**  
NO SCALE



**PUMP HOUSE INTAKE DETAIL**  
NOT TO SCALE

**DETAIL SHEET**  
PREPARED FOR APPLICANT  
**SIP ENERGY SOLUTIONS**

OWNER  
DSD CEDAR HILL, LLC  
P.O. BOX 103  
SOUTH WINDHAM, CONNECTICUT 06266  
SCALE: AS NOTED DATE: MARCH 16, 2012  
REVISED: JULY 2, 2012

SHEET 6 OF 8

**ENGINEERING & SURVEYING, LLC**

132 CONANTVILLE ROAD  
MANSFIELD CENTER, CT 06250  
TEL (860)456-1357 FAX (860)456-1840

JOB NO. 211015

CHECKED BY: \_\_\_\_\_ CORRECTIONS BY: \_\_\_\_\_

PROFESSIONAL ENGINEER AS LICENSED BY THE STATE OF CONNECTICUT  
DEPARTMENT OF CONSUMER PROTECTION.

GERALD HARDISTY, P.E. #15974