

SPRING PINES BLDG 835

835 E 4800 S Murray, UT 84107



Investment Realty
ADVISORS

JOSEPH MILLS

Principal, Director Sales & Leasing
801.971.2542
joseph@iraut.com

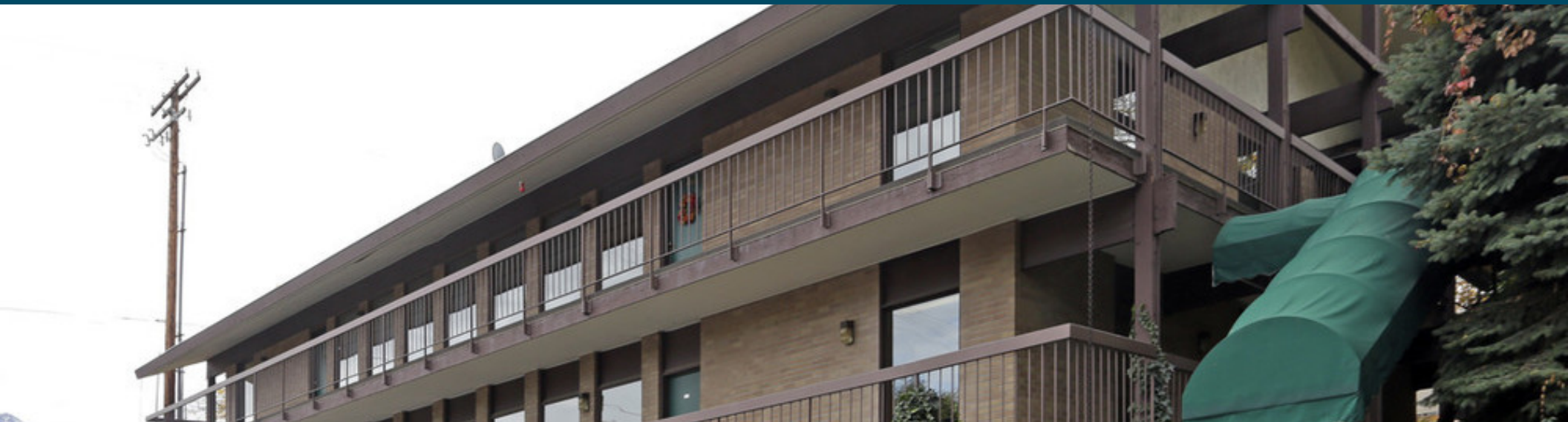
ELLIOT ABEL

Executive Vice President
801.231.8722
elliott@iraut.com

346 SF Of Office Space

SPRING PINES BLDG 835

PROPERTY SUMMARY



PROPERTY DESCRIPTION

Offices are quiet and suited for Professional/Corporate Office. Located at 835 E 4800 S, Murray City, Ut, 84107. Clean & Classic Offices with a convenient location off 700 E with Excellent parking and access.

Building 835 Unit 114

- Square Feet: 346
- Base Rent: \$320/Month (\$11.10 sf/yr)
- CAM Charge: \$115/Month (\$4 sf/yr)
- Total Rent Charges: \$435/Month
- Rooms: 1
- Floor: 1st
- Wi-fi: Not Included in Price
- Deposit: \$435 - Depending on application strength
- Available For Occupancy Now

Contact our Team for a showing: (435)485-7070 Call or Text!

UNIT INFORMATION

UNIT 114

Available SF:	346 SF
Base Rent:	\$11.10 sf/yr
CAM Fee:	\$4 sf/yr
Total Monthly Rent:	\$435
Building Information	
# of Units Available:	1
Parking:	Lots of Common Parking

JOSEPH MILLS

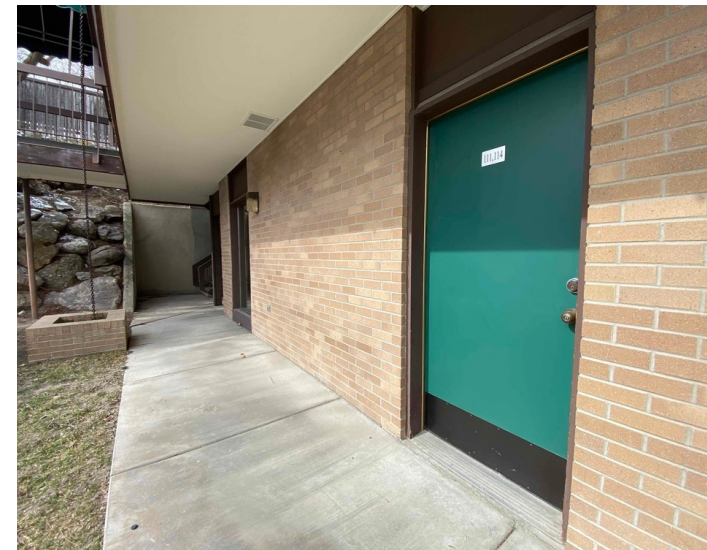
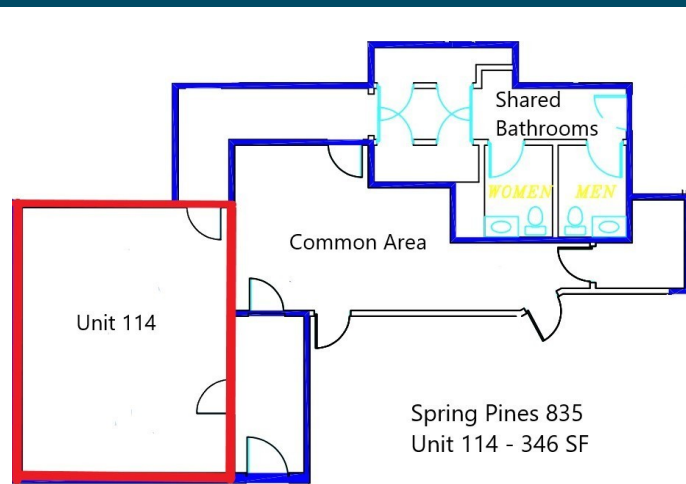
Principal, Director Sales & Leasing
801.971.2542
joseph@iraut.com

ELLIOT ABEL

Executive Vice President
801.231.8722
elliott@iraut.com

Investment Realty Advisors
411 W 7200 S, Suite 201, Midvale, UT 84047

SPRING PINES BLDG 835 UNIT 114 PHOTOS



JOSEPH MILLS

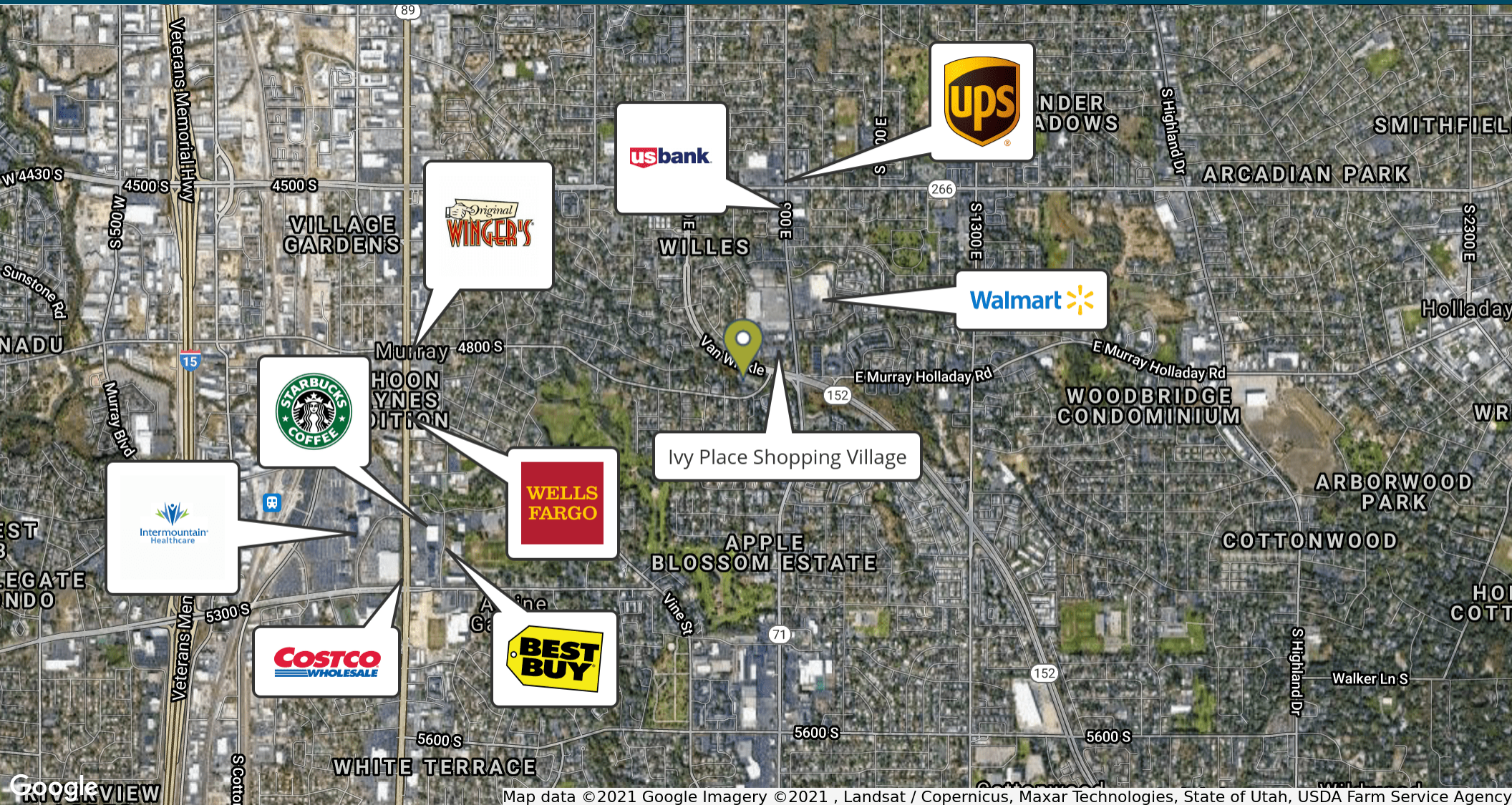
Principal, Director Sales & Leasing
801.971.2542
joseph@iraut.com

ELLIOT ABEL

Executive Vice President
801.231.8722
elliott@iraut.com

Investment Realty Advisors
411 W 7200 S, Suite 201, Midvale, UT 84047

SPRING PINES BLDG 835 LOCATION MAPS



Map data © 2021 Google Imagery © 2021 , Landsat / Copernicus, Maxar Technologies, State of Utah, USDA Farm Service Agency

JOSEPH MILLS

Principal, Director Sales & Leasing
801.971.2542
joseph@iraut.com

ELLIOT ABEL

Executive Vice President
801.231.8722
elliott@iraut.com

Investment Realty Advisors
411 W 7200 S, Suite 201, Midvale, UT 84047