

welltower

MEDICAL OFFICE SPACE
FOR LEASE

Click or Scan Below



For Information:

JACOB GRIESER
Leasing Director
419.247.5247
jgrieser@welltower.com

St. Elizabeth Medical Office Building

575 SOUTH 70TH STREET | LINCOLN, NE

medicaloffice.welltower.com

EXECUTIVE SUMMARY

welltower

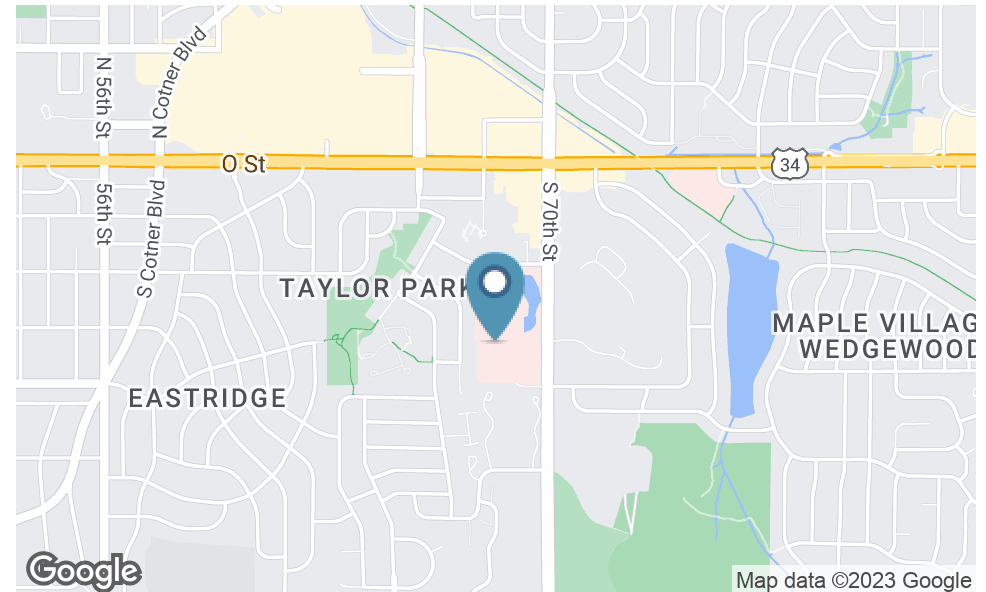


Location Description

Located on the campus of St. Elizabeth Regional Medical Center in Lincoln, Nebraska

Property Highlights

- Four story medical office building
- Connected to shared parking garage
- On-campus Hospital: CHI Health St. Elizabeth specializing in the treatment areas of newborn and pediatric care, women's health, burn and wound, cardiology, oncology, emergency medicine, orthopedics and neuroscience. More information available at www.chihealthstelizabeth.com.



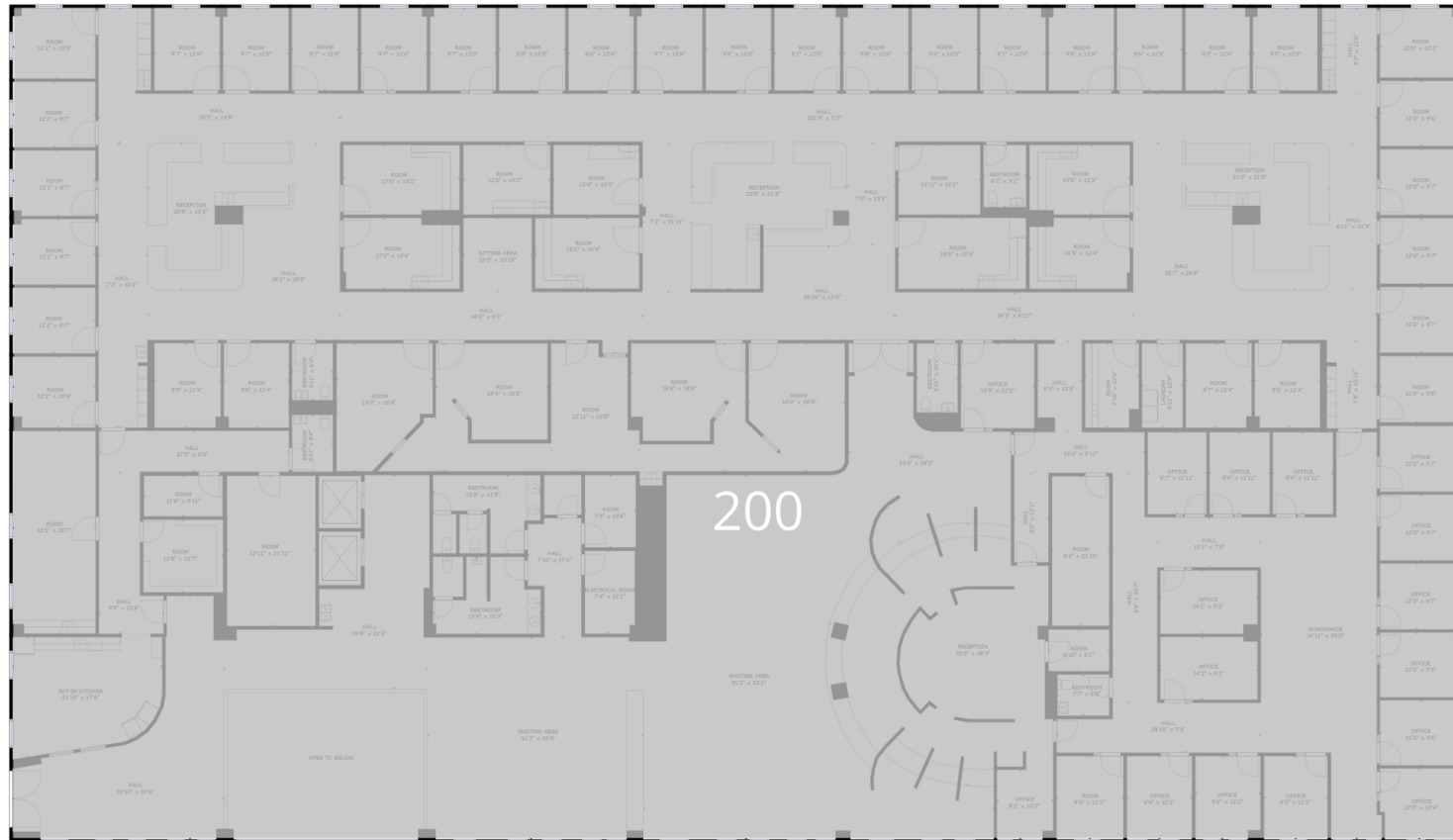
1ST FLOOR PLAN

welltower



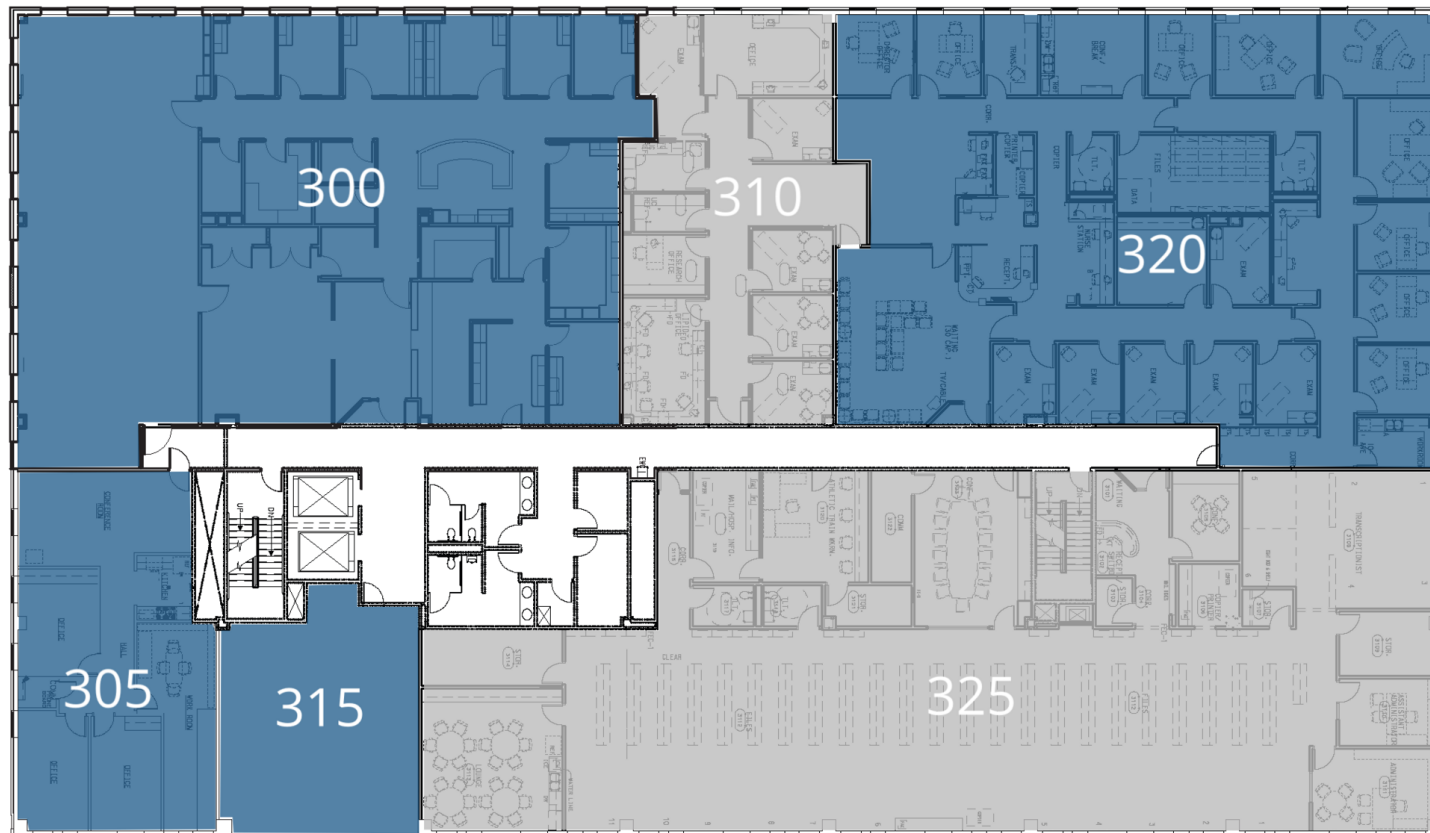
2ND FLOOR PLAN

welltower



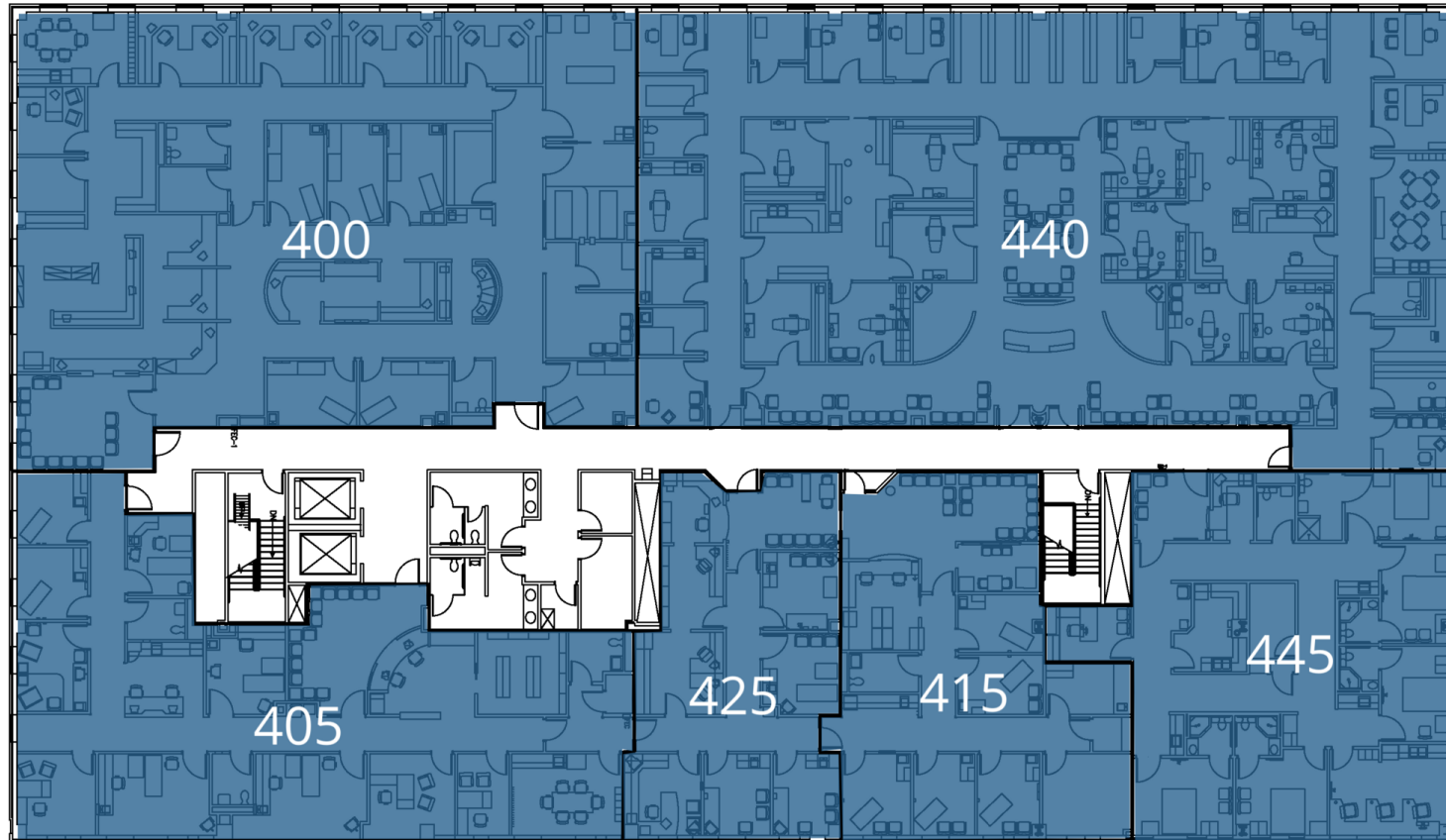
3RD FLOOR PLAN

welltower



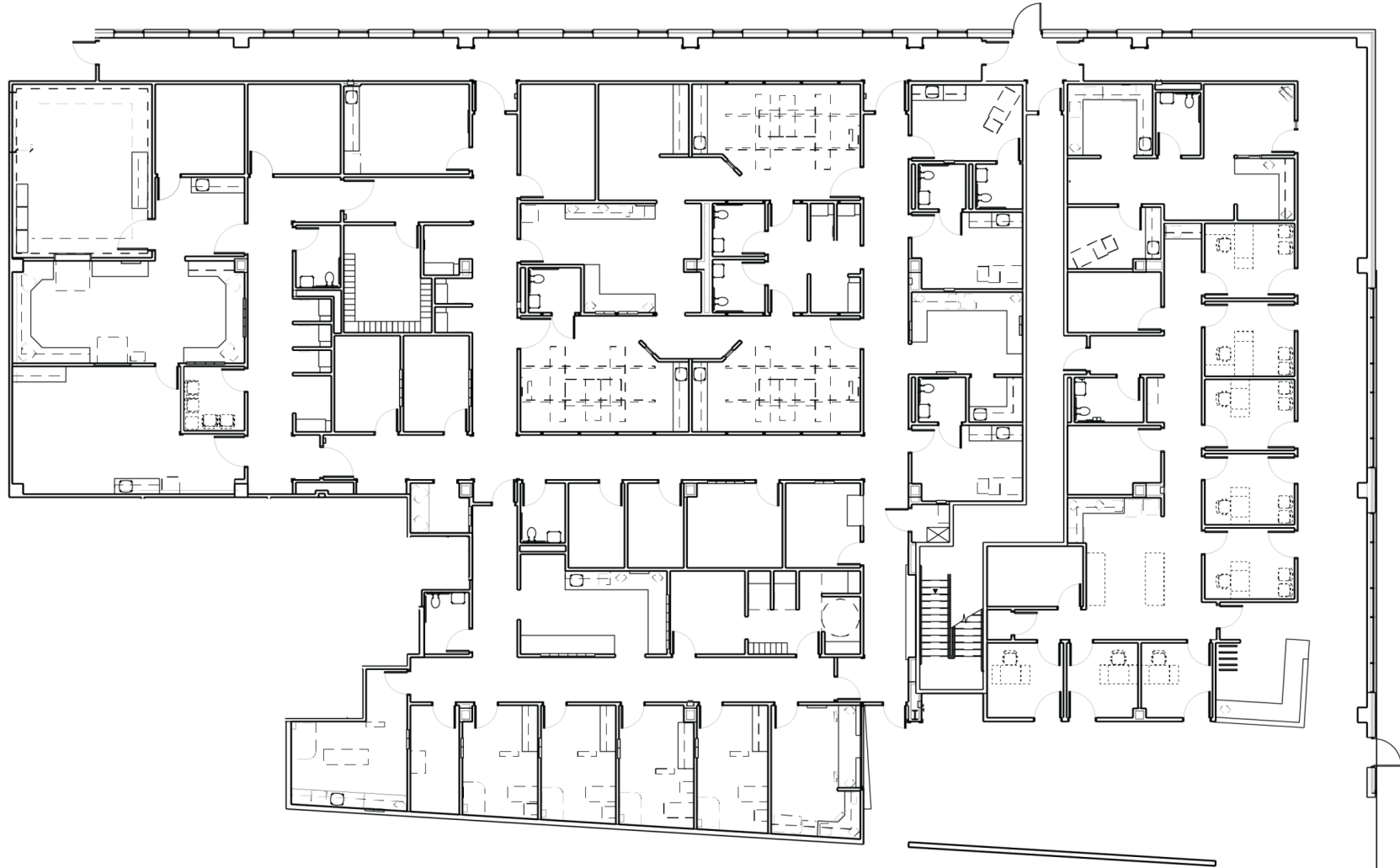
4TH FLOOR PLAN

welltower



FLOOR PLANS

welltower



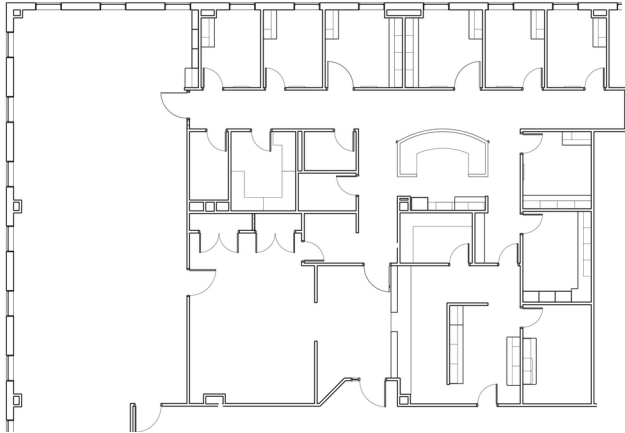
100

17,588 RSF

JACOB GRIESER
Leasing Director
419.247.5247
jgrieser@welltower.com

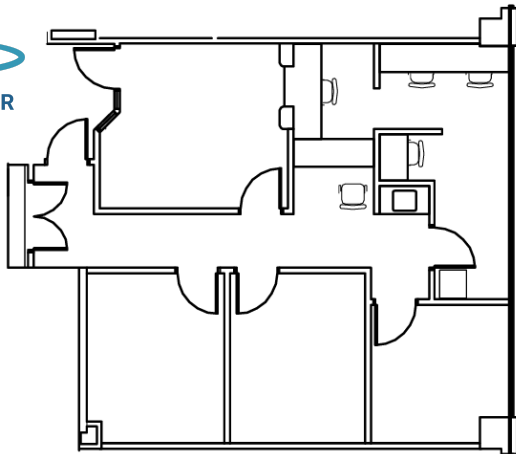
FLOOR PLANS

welltower



300

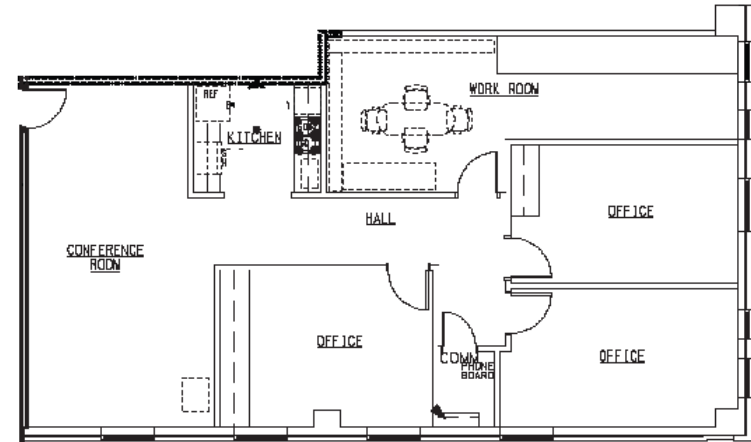
6,519 RSF



315

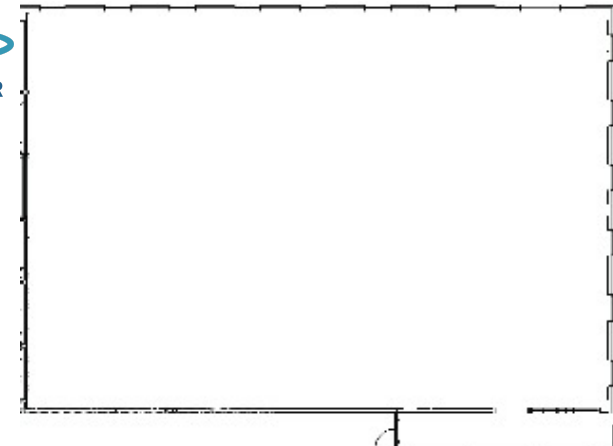
1,156 RSF

JACOB GRIESER
Leasing Director
419.247.5247
jgrieser@welltower.com



305

1,747 RSF

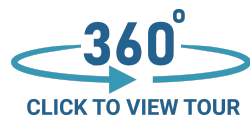


320

6,519 RSF

FLOOR PLANS

welltower



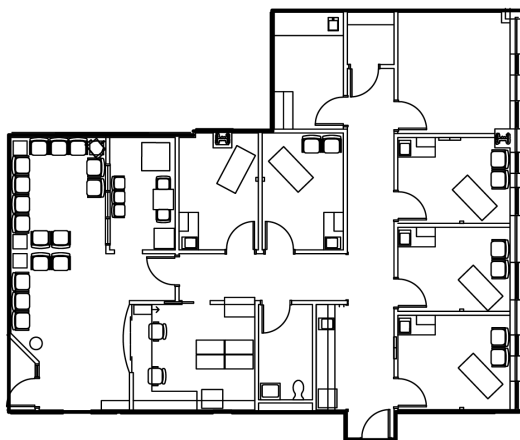
400

6,617 RSF



405

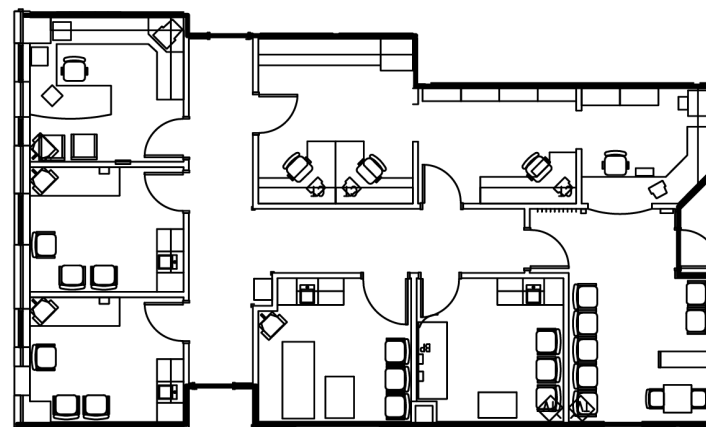
2,895 RSF



415

2,809 RSF

JACOB GRIESER
Leasing Director
419.247.5247
jgrieser@welltower.com



425

2,410 RSF

FLOOR PLANS

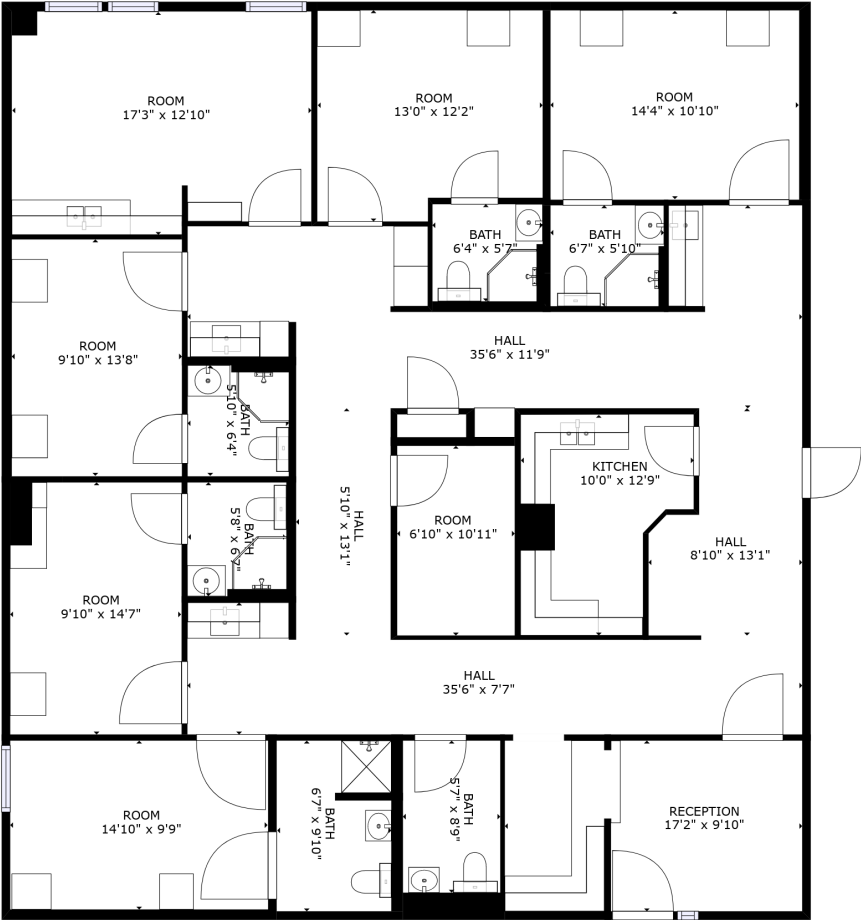
welltower



440

8,640 RSF

JACOB GRIESER
Leasing Director
419.247.5247
jgrieser@welltower.com



445

2,902 RSF