



ORCHARD PLAZA

76 South Orchard Dr., North Salt Lake, UT 84054

PROPERTY DESCRIPTION:

- Flex Space with Storage and Retail/Office Use Units That may be Subdivided
- High Visibility with Great Signage and On-site Parking
- Ground Level Doors
- Surrounded by Multiple New Housing Developments
- Located Next to Orchard Elementary School
- Nearby Highly Trafficked Establishments: Sunshine Cafe and Chevron
- 54,000 Households within 3 Mile Radius & Median Household Income of \$83,373
- Renderings are Future Concepts

LEASE RATE:

\$8.00 SF/YR (NNN)

PROPERTY DETAILS:

30,784 SF TOTAL

1,565-11,361 SF UNITS

CHRISTIAN PRISKOS

801.573.8500

christian@iproperties.com

51 East 400 South Suite 210
Salt Lake City, UT 84111
801.355.0600 | iproperties.com



PROPERTY DESCRIPTION

Orchard Plaza is surrounded by multiple new housing developments. The location offers excellent visibility as well as easy access to all major freeways.

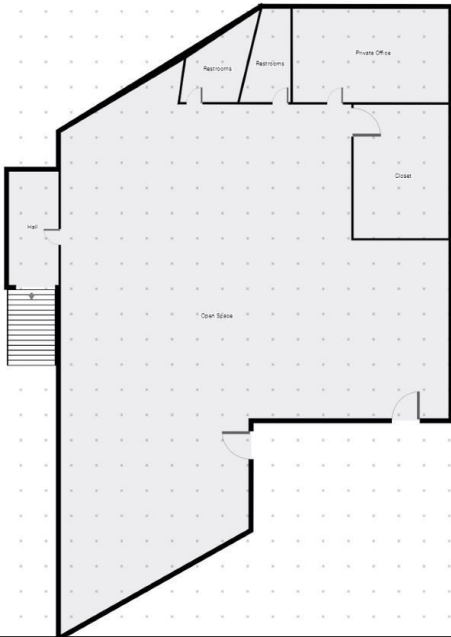
SPACES	LEASE RATE	SPACE SIZE
76-A	\$8.00 SF/yr	7,371 SF
72-A	\$8.00 SF/yr	4,425 SF
70-A	\$8.00 SF/yr	1,905 SF
76-B	\$8.00 SF/yr	11,361 SF
168	\$8.00 SF/yr	4,157 SF
170	\$8.00 SF/yr	1,565 SF



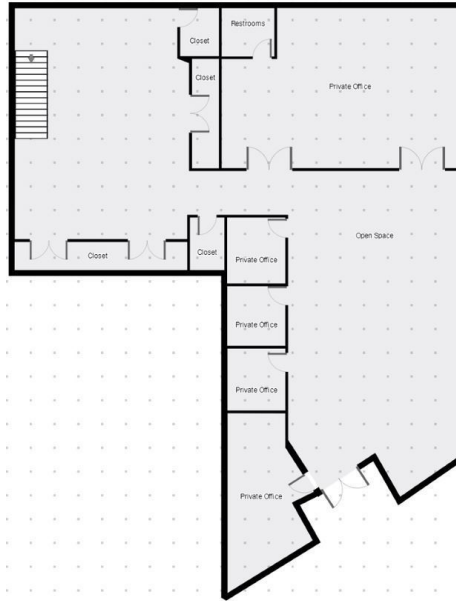
CHRISTIAN PRISKOS

801.573.8500
christian@iproperties.com

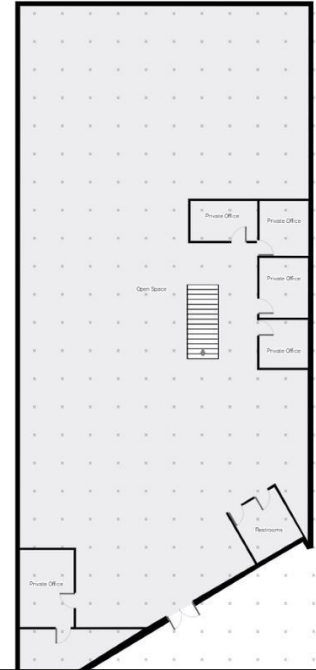
51 East 400 South Suite 210
Salt Lake City, UT 84111
801.355.0600 | iproperties.com



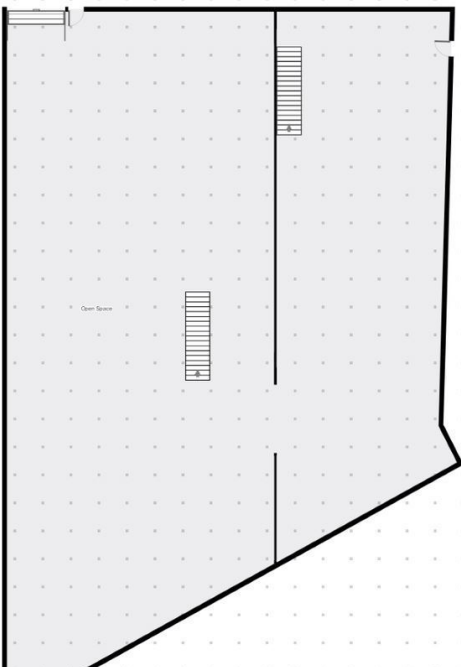
Unit 70-A



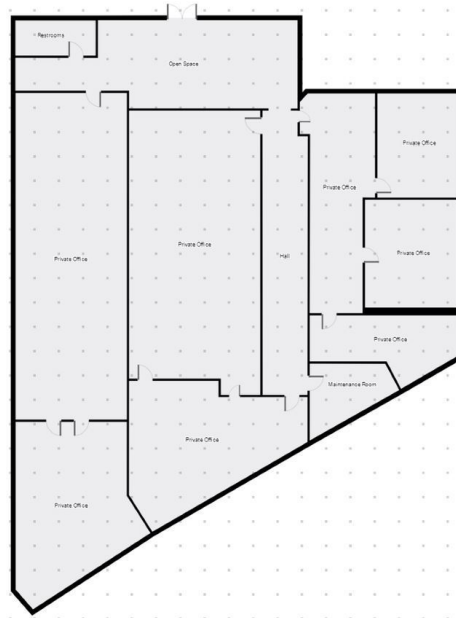
Unit 72-A



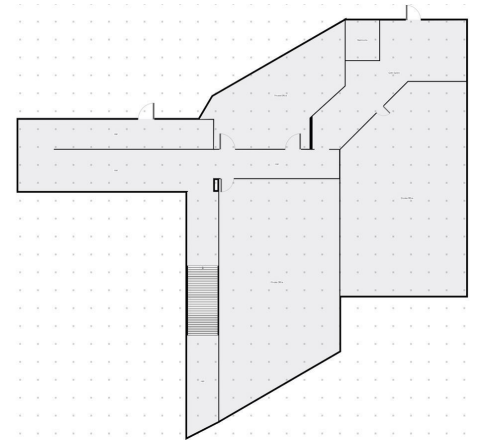
Unit 76-A



Unit 76-B



Unit 16-B



Unit 170-B

CHRISTIAN PRISKOS

801.573.8500

christian@iproperties.com

51 East 400 South Suite 210
Salt Lake City, UT 84111
801.355.0600 | iproperties.com



Future Concept Rendering



Current Interior Photo

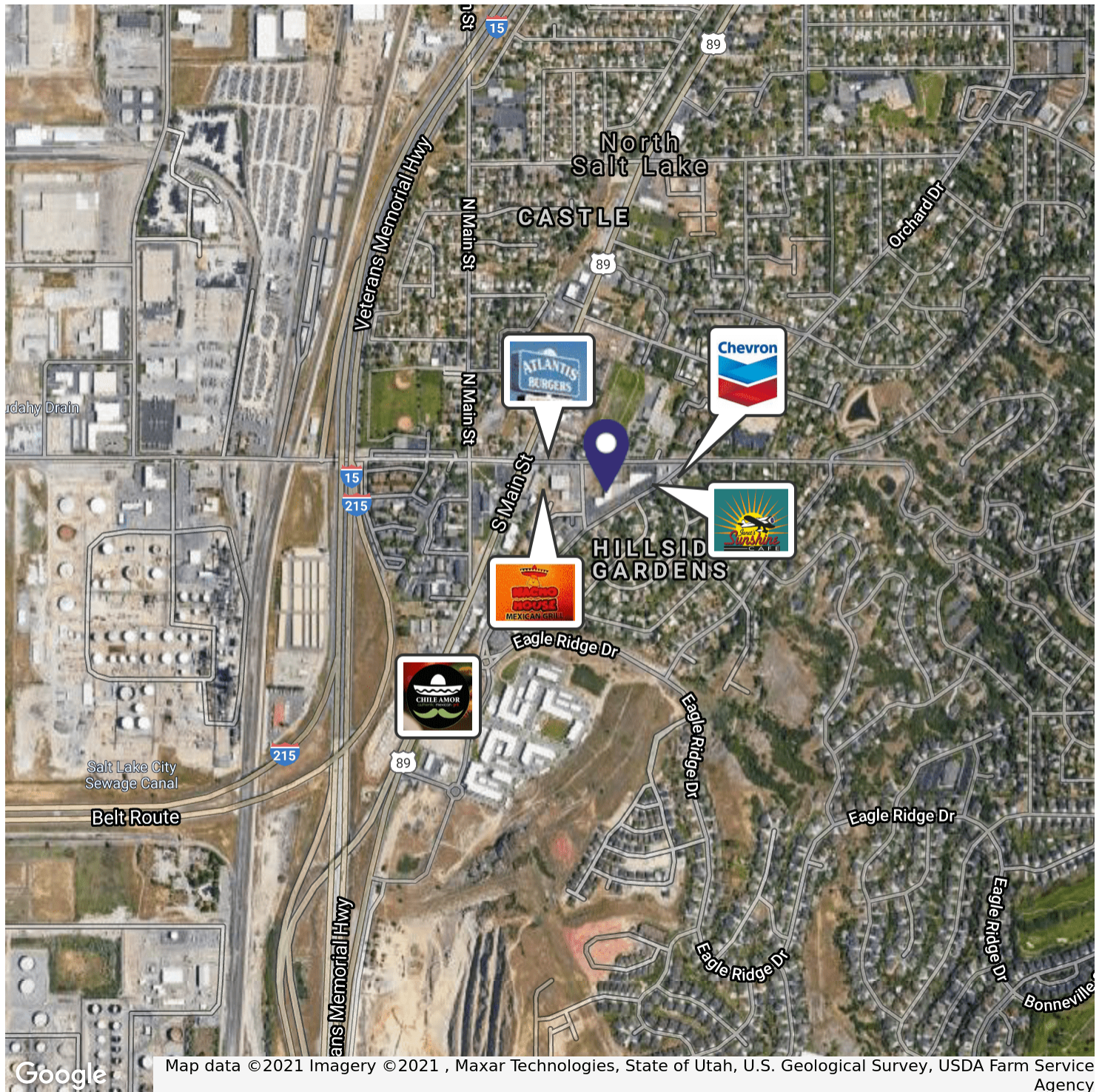


Rear Door

CHRISTIAN PRISKOS

801.573.8500
christian@iproperties.com

51 East 400 South Suite 210
Salt Lake City, UT 84111
801.355.0600 | iproperties.com



CHRISTIAN PRISKOS

801.573.8500
christian@iproperties.com

51 East 400 South Suite 210
Salt Lake City, UT 84111
801.355.0600 | iproperties.com