



**Available:  
2,904 SF**

**For Sale:  
\$65,000**



For information, contact:

**Tim Echemann, SIOR, CCIM**  
[techemann@IPBindustrial.com](mailto:techemann@IPBindustrial.com)

or

**Darcie Crosson**  
[dcrosson@IPBindustrial.com](mailto:dcrosson@IPBindustrial.com)

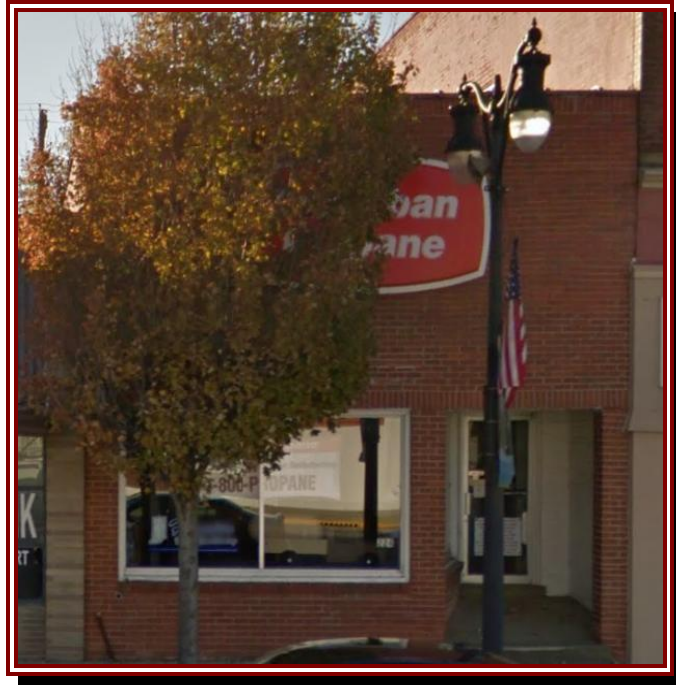
**937.492.4423**

[www.IPBindustrial.com](http://www.IPBindustrial.com)

## Office/Retail Facility

**224 N. Meridian Street**

**Portland, Indiana 47371**



Square Footage: 2,904 SF

Lot: .067Acre

Zoning: CBD; Central Business

Utilities: Electric – I & M  
City Water & Sewer  
Gas-Ohio Valley Gas

Year Built: 1940

Parcel Number: 38-07-20-104-044-000.034

Annual Taxes: \$1,185.80

### Demographics:

(1 Mile Radius)  
Population: 5,350  
Households: 2,228  
Average Income: \$35,426

(3 Mile Radius)  
Population: 7,924  
Households: 3,276  
Average Income: \$38,397

(10 Mile Radius)  
Population: 15,933  
Households: 5,966  
Average Income: \$44,021

### Location:

Jay County, Indiana is located in close proximity to some of the nation's major highway systems – I-69, a major north-south interstate and I-75 another major north-south corridor. In addition, we are within a few miles of I-70, one of the most traveled east-west interstates in the nation.