

LOT FOR SALE



HARTUNG AND NOBLIN, INC.

Property Information

Address: **Highland Oaks Terrace
Tallahassee, FL 32301**

Lot: **#4**

Acres: **0.49 Acres**

Features

- This lot has received:
 - Site Plan Approval
 - Environmental Permit
 - Concurrency Permit
 - Approved for 4,000 SF Medical Office
- Parcel ID: #1133390000040
- Zoned: Commercial Parkway (CP)

Area

Located just off Capital Circle SE between Park Ave & Apalachee Pkwy.

Part of Highland Commercial Phase II

PRICE: \$150,000

CONTACT:

Chip Hartung

850-386-6160 o

850-980-4007 m

chiphartung@cbhnmail.com email

cbhncommercial.com website

Steve Allen

850-386-6160 o

850-566-5757 m

allengroup14@gmail.com email

cbhncommercial.com website



The information shown or contained herein is believed to be accurate but is not warranted or guaranteed, is subject to errors, omissions and changes without notice and should be verified independently.

CBCWORLDWIDE.COM

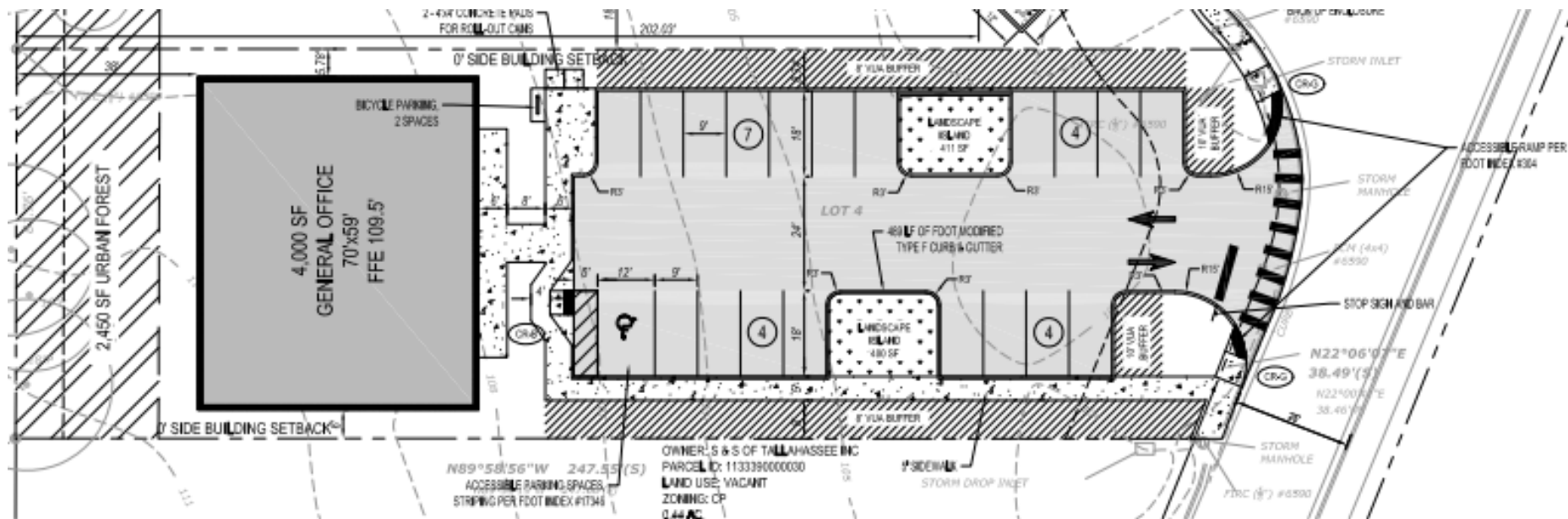
©2019 Coldwell Banker Real Estate LLC, dba Coldwell Banker Commercial Affiliates. All Rights Reserved. Coldwell Banker Real Estate LLC, dba Coldwell Banker Commercial Affiliates fully supports the principles of the Equal Opportunity Act. Each Office is Independently Owned and Operated. Coldwell Banker Commercial and the Coldwell Banker Commercial Logo are registered service marks owned by Coldwell Banker Real Estate LLC, dba Coldwell Banker Commercial Affiliates.

**Coldwell Banker Commercial
HARTUNG AND NOBLIN, INC.**

3303 Thomasville Rd, Suite #201

Tallahassee, FL 32308

850.386.6160





PROPERTY & LOCATION MAP

