



MULTIFAMILY DEVELOPMENT LAND | BORDERING SOUTHERN MISS CAMPUS

500 N. 38TH AVENUE
HATTIESBURG, MS 39401

Greg Brett | Chamberlan Carothers, CCIM, CPM
Advisor | Managing Director
601.264.4622 | 601.264.4622 x205
gbrett@svn.com | ccarothers@svn.com

Property Summary



OFFERING SUMMARY

Sale Price: \$269,000
\$4.52/sf

PROPERTY OVERVIEW

+/- 1.52 Acres of Multifamily Zoned Land (R-3) near the Southern Miss Campus.

PROPERTY HIGHLIGHTS

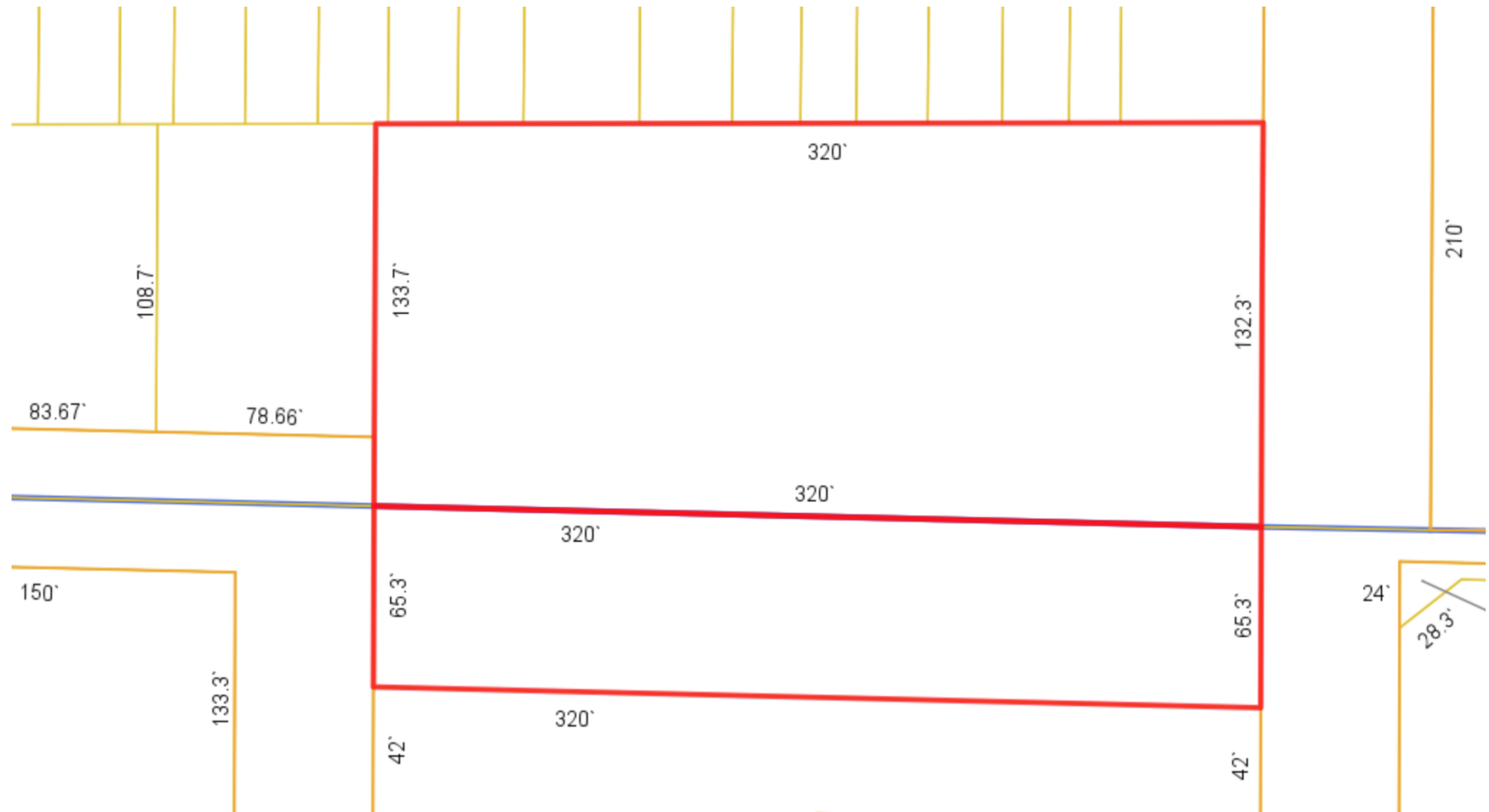
Total Property Acreage: +/- 1.52 Acres

Zoning: R-3

Traffic Count: 12,000

- Multifamily/Student Housing Development Opportunity
- Frontage on N. 38th Avenue (one of 4 streets encircling Southern Miss campus)
- Walk/Bike to the Southern Miss campus
- Walk/Bike to the Longleaf Trace Recreational Trail
- 5-15 Minute walk/bike to Midtown
- Convenient to Hattiesburg's Retail Corridor Hardy St./Hwy 98 W

Property Dimensions



Aerial View From N. 38th Avenue



Frontage On N. 38th Avenue



Aerial View From N. 39th Avenue



Frontage On N. 39th Avenue



LOCATION INFORMATION

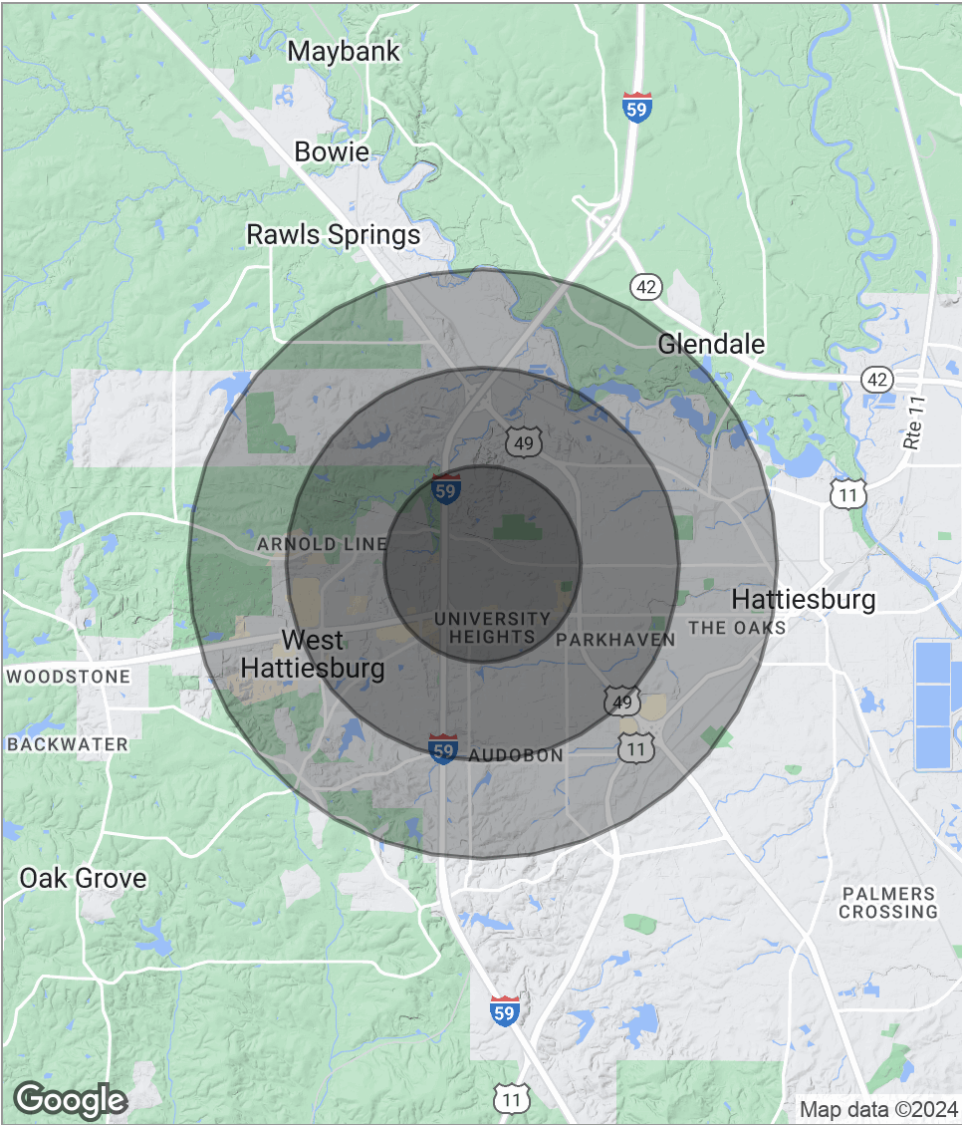
500 N. 38th Avenue
Hattiesburg, MS 39401

THE UNIVERSITY OF SOUTHERN MISSISSIPPI

DEMOGRAPHICS

500 N. 38th Avenue
Hattiesburg, MS 39401

Demographics Map



POPULATION	1 MILE	2 MILES	3 MILES
Total population	8,227	20,395	34,784
Median age	24.5	27.5	29.5
Median age [Male]	24.8	27.4	29.1
Median age [Female]	24.5	27.9	30.2
HOUSEHOLDS & INCOME	1 MILE	2 MILES	3 MILES
Total households	2,953	8,259	14,650
# of persons per HH	2.8	2.5	2.4
Average HH income	\$39,227	\$43,988	\$46,647
Average house value	\$176,270	\$163,399	\$157,005

* Demographic data derived from 2020 ACS - US Census



1700 S. 28th Avenue, Suite C
Hattiesburg, MS 39402
601.264.4622
SouthgateRealtyLLC.com