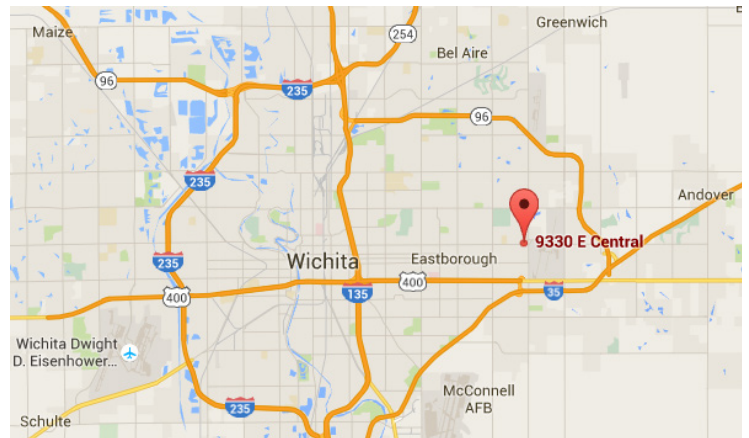




9330 E Central | Lakepoint Office Park

Property Details

- Approximately 2,900 SF office suite
- 8,418 SF total building area
- Located in the Lakepoint Office Park
- Doorside Parking
- Move-in ready condition
- Lease rate: \$14.75 per SF, Full Service



For More Information:

Grant Glasgow

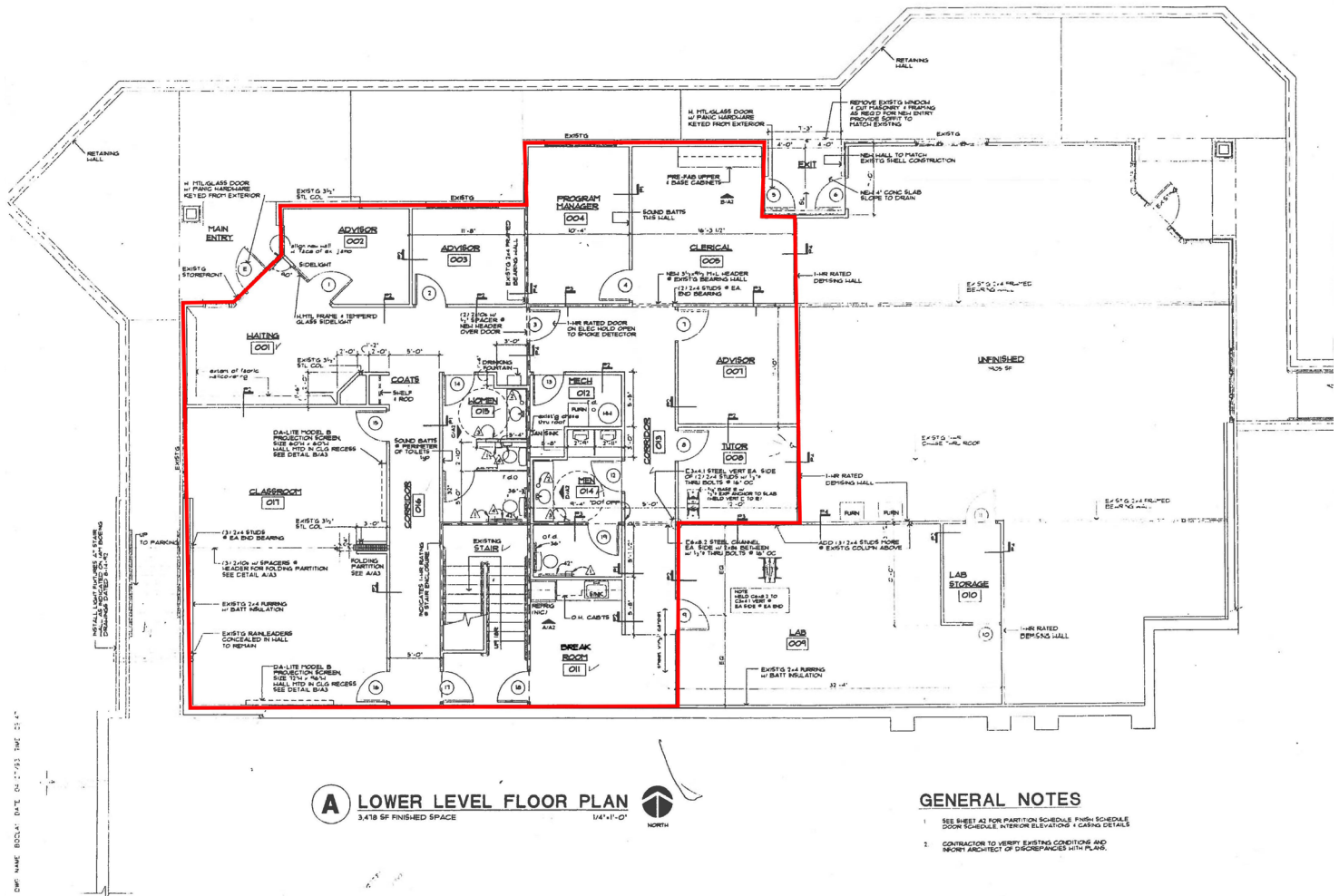
(316) 262-0000

GGlasgow@NAImartens.com



For Lease
Office Space
Wichita, Kansas

NAI Martens



For More Information:

Grant Glasgow

(316) 262-0000

GGlasgow@NAImartens.com

NAI Martens
435 South Broadway
Wichita, KS 67202
316.262.0000

Independently Owned and Operated. The information contained herein was obtained from sources believed reliable; however, NAI Martens Company makes no guarantees, warranties or representations as to the completeness or accuracy thereof. The presentation of this property is submitted subject to errors, omissions, change of price or conditions prior to sale or lease, or withdrawal without notice.