

Office / Warehouse / Retail For Lease

# The Marketplace at Pointe South

8303-8315 E 111th St Bixby, OK 74008

**WIGGIN**  
PROPERTIES, LLC



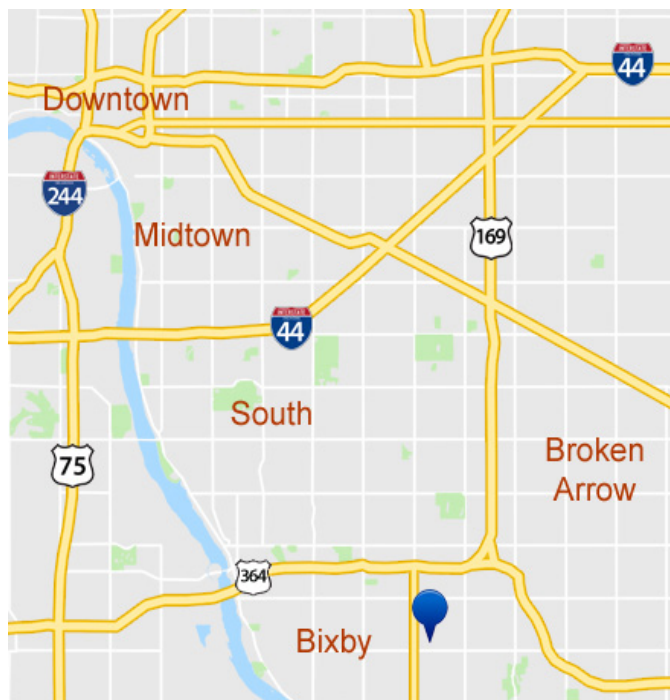
## Property Features

### + Office/Warehouse

- 1,000 - 2,200 SF Suites
- 14' - 18' Clear Height
- 12' x 14' Overhead Doors
- Central HVAC in Offices
- Zoned IL and CS
- Close Proximity to Creek Turnpike

### + Office/Retail - FULLY LEASED

- 2,100 SF Suites
- Quality Interior Finish
- Fully Climate Controlled
- E 111th St Frontage
- Zoned IL and CS



Call Shawna Hale or John Watchous at **918.935.2010**

[shale@wigginprop.com](mailto:shale@wigginprop.com) | [jwatchous@wigginprop.com](mailto:jwatchous@wigginprop.com) | [wigginprop.com](http://wigginprop.com)

This material is provided for information purposes only. It is from sources believed to be reliable. However, Wiggin Properties makes no warranties or representations, expressed or implied, as to the accuracy or sufficiency of the information. It is presented subject to errors, omissions, changes or withdrawal without notice. Square footage per owner. Maps © 2018 Google.

# The Marketplace at Pointe South

8303-8315 E 111th St Bixby, OK 74008

## Site Plan

Bldg. 8303

A	K
B	L
C	M
D	N
E	O
F	P
G	Q
H	R
I	S
J	T

Bldg. 8307

A	K
B	L
C	M
D	N
E	O
F	P
G	Q
H	R
I	S
J	T

Bldg. 8311

A	K
B	L
C	M
D	N
E	O
F	P
G	Q
H	R
I	S
J	T

Bldg. 8315 - Office/Retail - Fully Leased

A	B	C	D	E	F & G	H	I	J	K
---	---	---	---	---	-------	---	---	---	---

111<sup>th</sup> Street South

Bldg. 11110

G	A
H	B
I	C
J	D
K	E
L	F

111<sup>th</sup> Place South

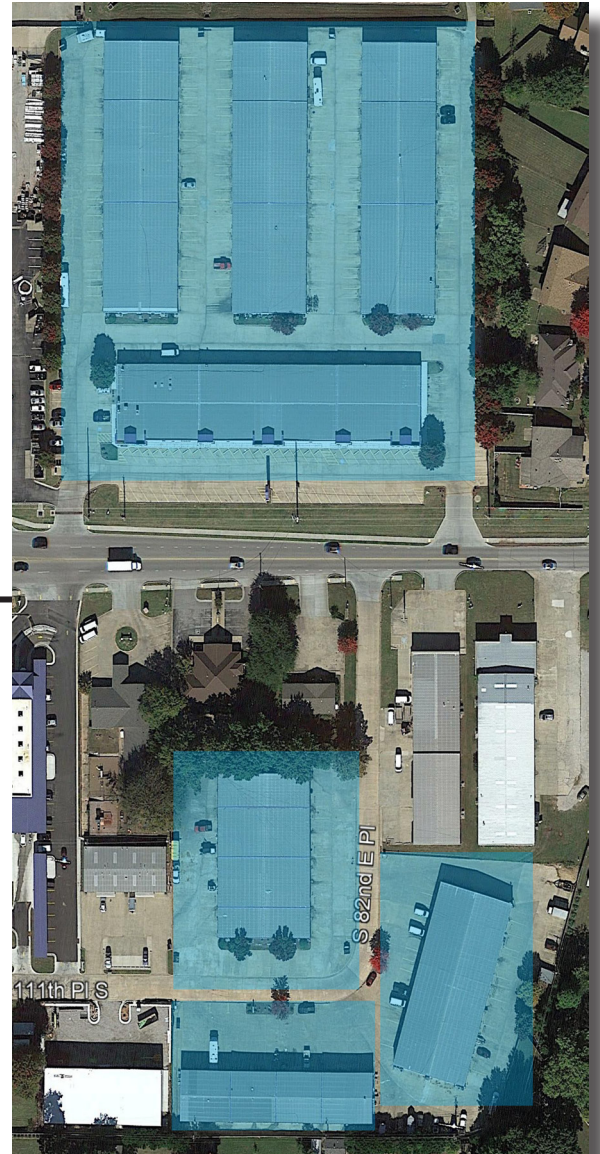
South 82<sup>nd</sup> East Place

Bldg. 11145

A	H
B	I
C	J
D	K
E	L
F	M
G	N

Bldg. 8230

A	B	C	D	E	F	G	H
---	---	---	---	---	---	---	---



Call Shawna Hale or John Watchous at **918.935.2010**