

FOR LEASE

OFFICE BUILDING



MODERN OFFICE SPACE WITH WATERVIEWS

25 SANDWICH STREET, PLYMOUTH, MA 02360

For More Information

DAVE ELLIS

781.919.0800 x101
dave@ellisrealtyadvisors.com



101 ACCORD PARK DRIVE | NORWELL, MA 02061 | 781.919.0800 | ELLISREALTYADVISORS.COM

MODERN OFFICE SPACE WITH WATERVIEWS



PROPERTY DESCRIPTION

Flexibly 2,664 SF Office Building with floor to ceiling windows, views of Plymouth Harbor. Currently set up with two large offices, reception area, conference room, large open layout bullpen, kitchen and plenty of storage. Walk to downtown shoppes and restaurants or to historic waterfront.

PROPERTY HIGHLIGHTS

- Plymouth Harbor Waterviews
- Floor to Ceiling Windows
- Private Off-Street Parking
- Walking distance to Downtown Shoppes & Restaurants
- Great Signage Opportunity

OFFERING SUMMARY

| | |
|------------------|--------------------|
| Lease Rate: | \$20.00 SF/yr (MG) |
| Number of Units: | 1 |
| Available SF: | 2,664 SF |
| Lot Size: | 0.5 Acres |
| Building Size: | 2,664 SF |

| DEMOGRAPHICS | 1 MILE | 3 MILES | 5 MILES |
|-------------------|----------|----------|----------|
| Total Households | 1,718 | 6,568 | 11,224 |
| Total Population | 3,799 | 15,764 | 28,779 |
| Average HH Income | \$71,589 | \$76,870 | \$89,767 |

MODERN OFFICE SPACE WITH WATERVIEWS



LOCATION INFORMATION

| | |
|---------------------|--------------------|
| Street Address | 25 Sandwich Street |
| City, State, Zip | Plymouth, MA 02360 |
| County | Plymouth |
| Signal Intersection | No |

BUILDING INFORMATION

| | |
|------------------|------|
| Building Class | A |
| Number of Floors | 1 |
| Year Built | 1969 |
| Free Standing | No |

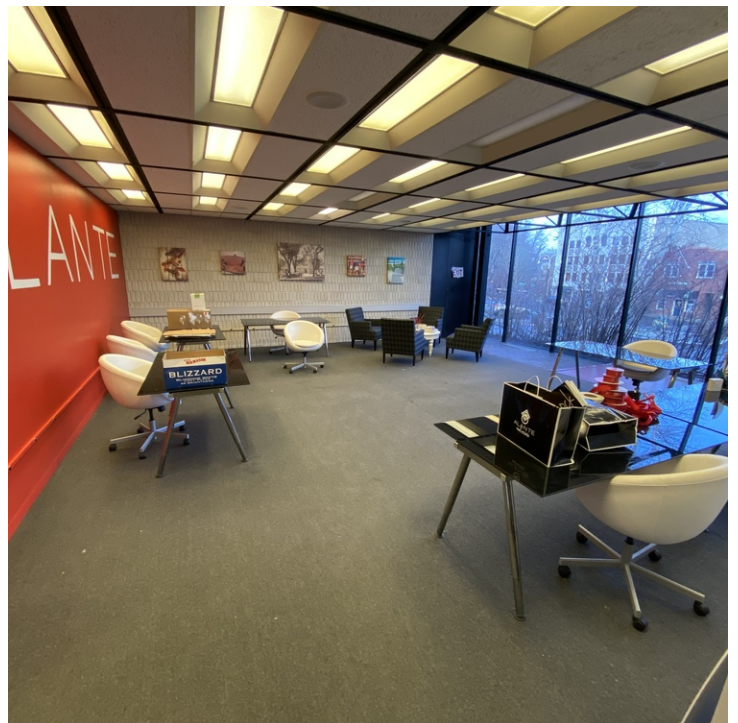
PROPERTY HIGHLIGHTS

- Plymouth Harbor Waterviews
- Floor to Ceiling Windows
- Private Off-Street Parking
- Walking distance to Downtown Shoppes & Restaurants
- Great Signage Opportunity



ADDITIONAL PHOTOS

MODERN OFFICE SPACE WITH WATERVIEWS

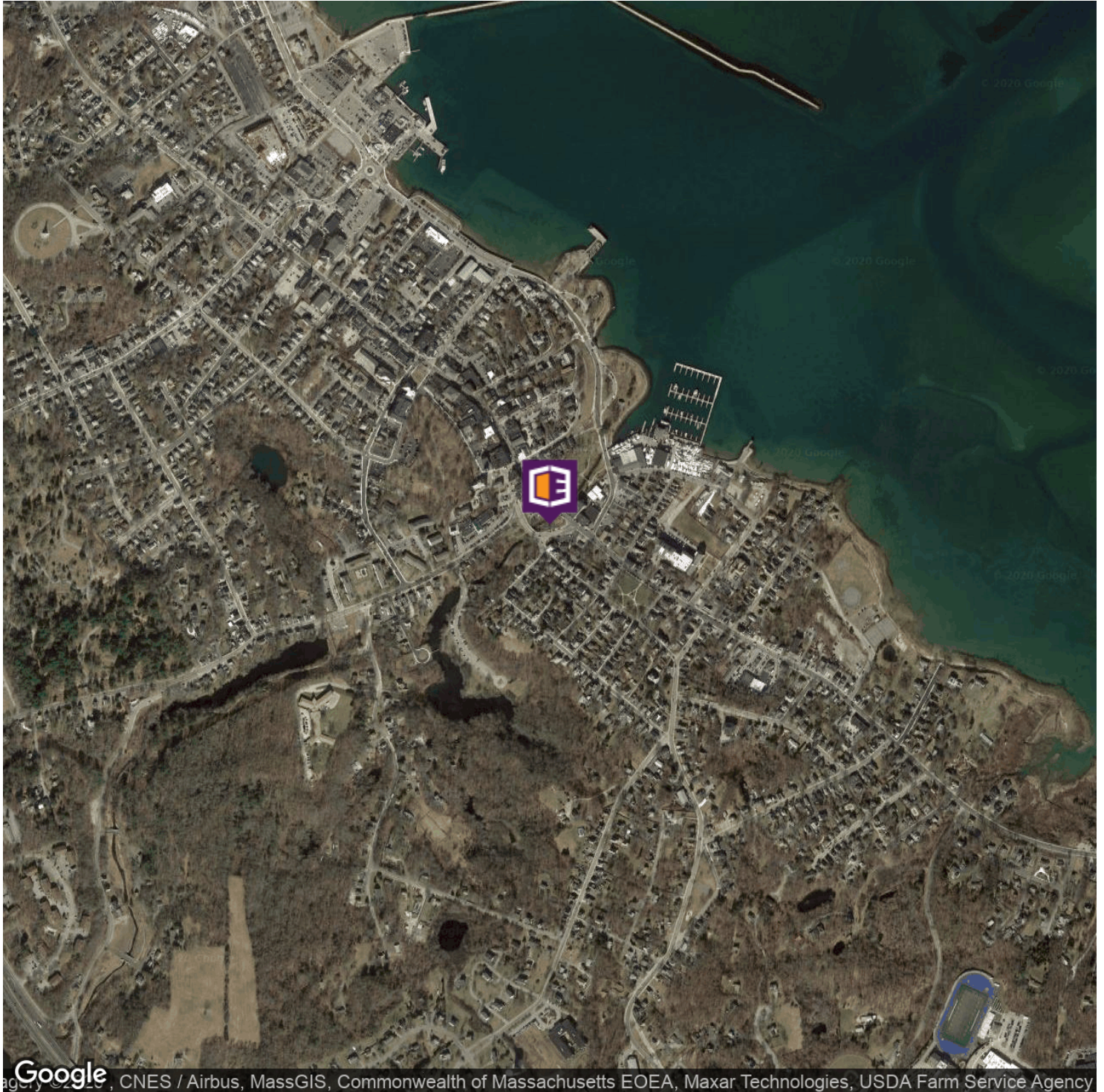


DAVE ELLIS

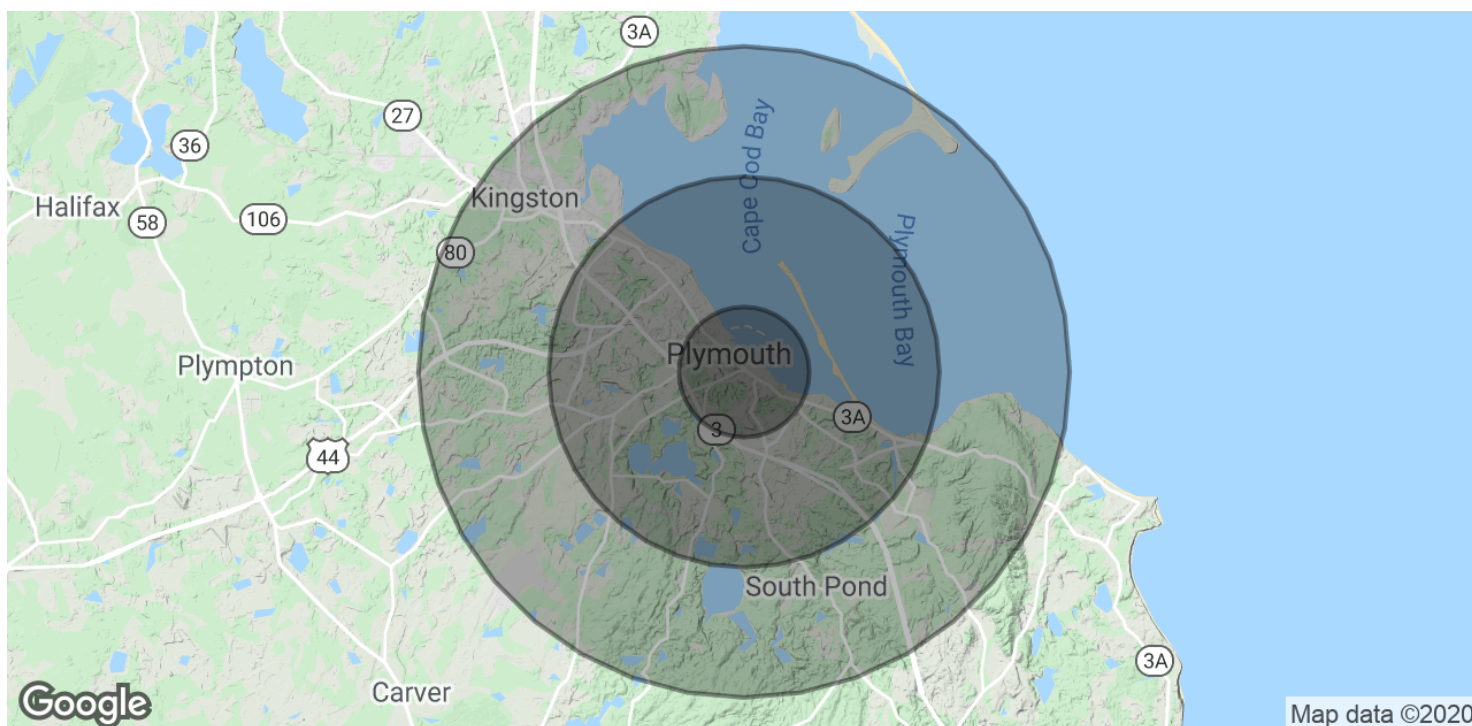
781.919.0800 x101
dave@ellisrealtyadvisors.com

101 ACCORD PARK DRIVE | NORWELL, MA 02061 | 781.919.0800 | ELLISREALTYADVISORS.COM

MODERN OFFICE SPACE WITH WATERVIEWS



MODERN OFFICE SPACE WITH WATERVIEWS



| POPULATION | 1 MILE | 3 MILES | 5 MILES |
|----------------------|-----------|-----------|-----------|
| Total Population | 3,799 | 15,764 | 28,779 |
| Average age | 43.0 | 42.2 | 42.1 |
| Average age (Male) | 41.1 | 40.8 | 41.0 |
| Average age (Female) | 44.5 | 43.4 | 43.2 |
| HOUSEHOLDS & INCOME | 1 MILE | 3 MILES | 5 MILES |
| Total households | 1,718 | 6,568 | 11,224 |
| # of persons per HH | 2.2 | 2.4 | 2.6 |
| Average HH income | \$71,589 | \$76,870 | \$89,767 |
| Average house value | \$366,767 | \$335,377 | \$367,687 |

* Demographic data derived from 2010 US Census