



PROPERTY DESCRIPTION

Exciting Renovations in Progress! Discover unparalleled visibility along North Wilmington's premier retail corridor. This stand-alone retail building boasts abundant off-street parking situated conveniently behind the property. The upcoming transformation will result in 1,732 square feet of ground floor retail space, accompanied by an additional 730 square feet of second-floor office space. Don't miss the opportunity to be a part of this thriving retail hub!

Located on the desirable northbound side of Concord Pike 2.5 miles from the I-95/Concord Pike Interchange. Property sits between Delaware Avenue and Cleveland Avenue.

PROPERTY DETAILS

- **Ground Floor Retail:** 1,732 SF
 > **Lease Rate:** \$45/SF/NNN
- **Second Floor Office:** 730 SF
 > **Lease Rate:** Negotiable
- **Delivery Date:** June 2024

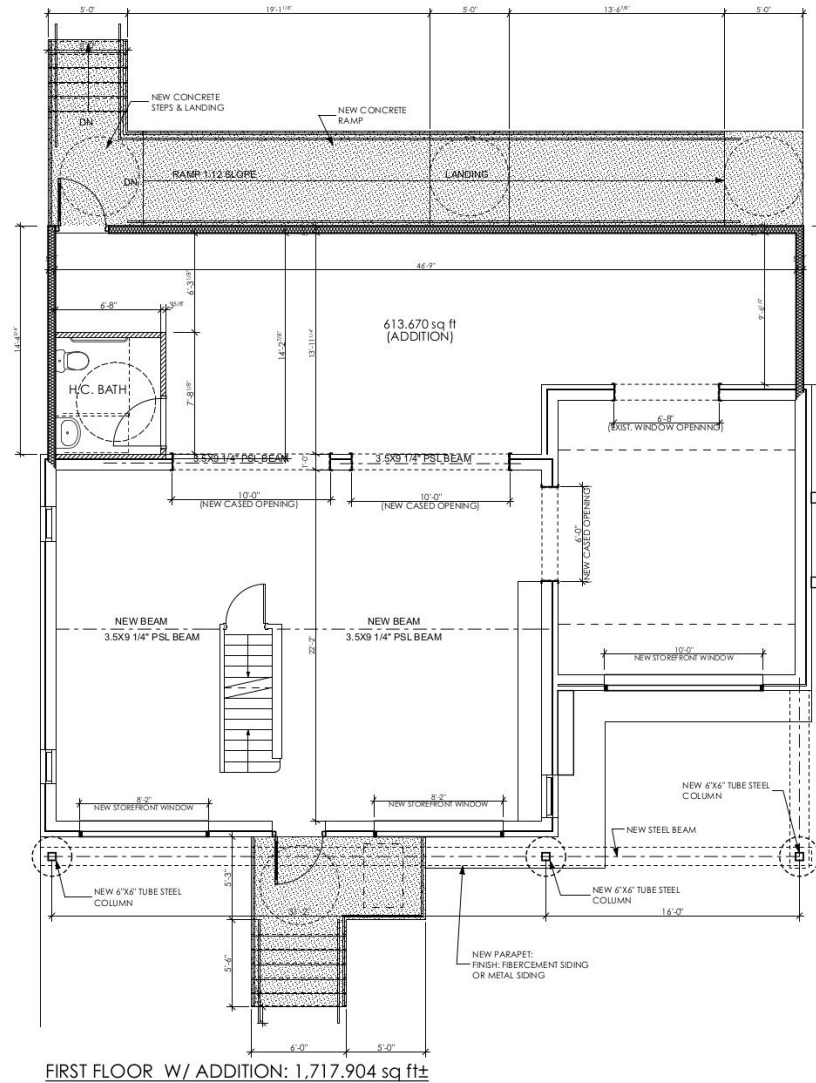
DEMOGRAPHICS	1 MILE	3 MILES	5 MILES
Population	8,867	56,201	189,136
Daytime Population	12,470	65,945	218,676
Households	3,665	22,994	76,778
Average Household Income	\$143,540	\$124,803	\$99,014
Median Age	47.4	46.8	40.9



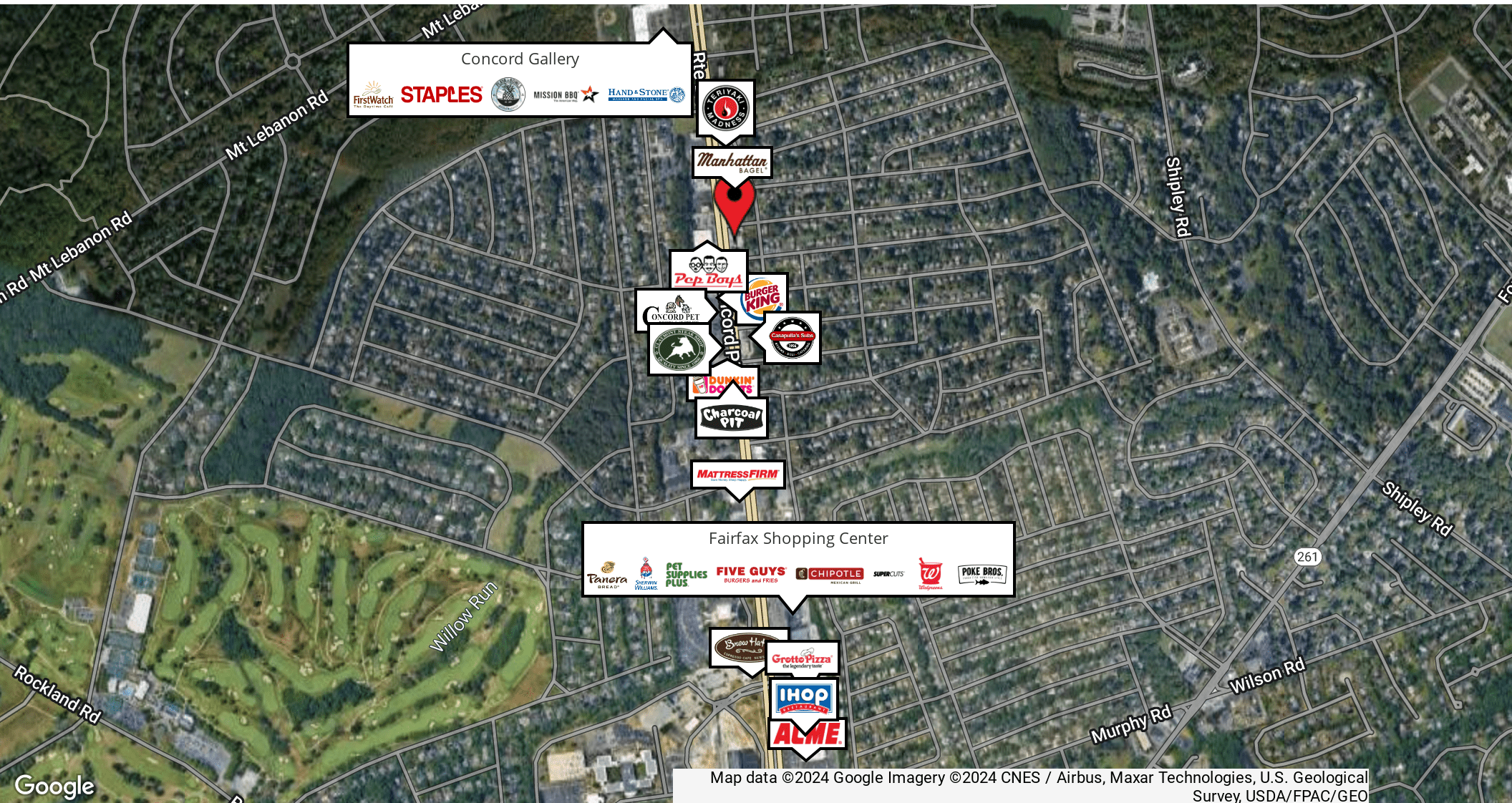
For More Information, Contact:

Andy Fox
afox@dsmre.com
302.283.1800 Office
302.229.1304 Cell

DSM Commercial
Real Estate Services
3304 Old Capitol Trail
Wilmington, DE 19808
dsmre.com



DSM Commercial
Real Estate Services
3304 Old Capitol Trail
Wilmington, DE 19808
dsmre.com



For More Information, Contact:

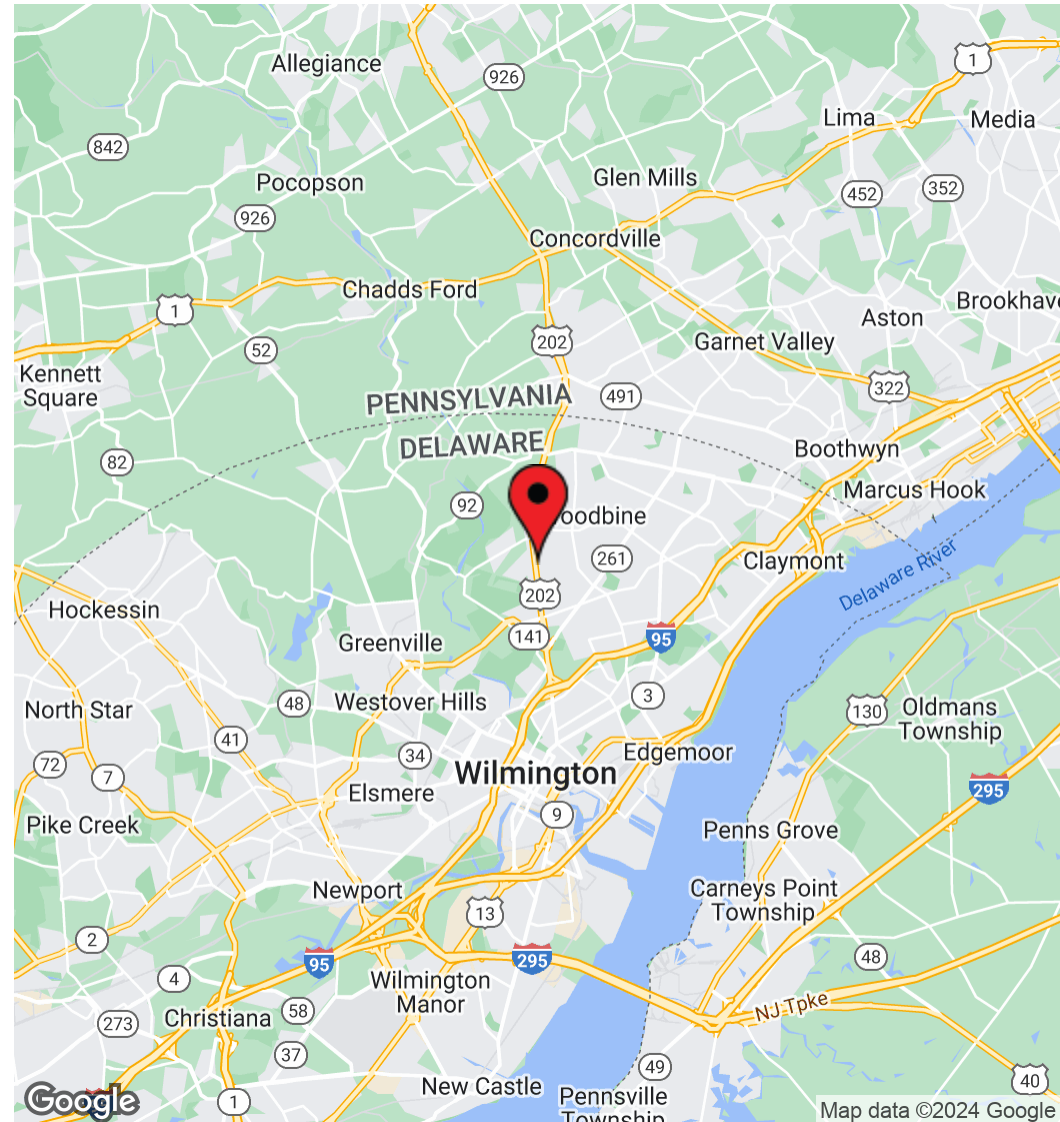
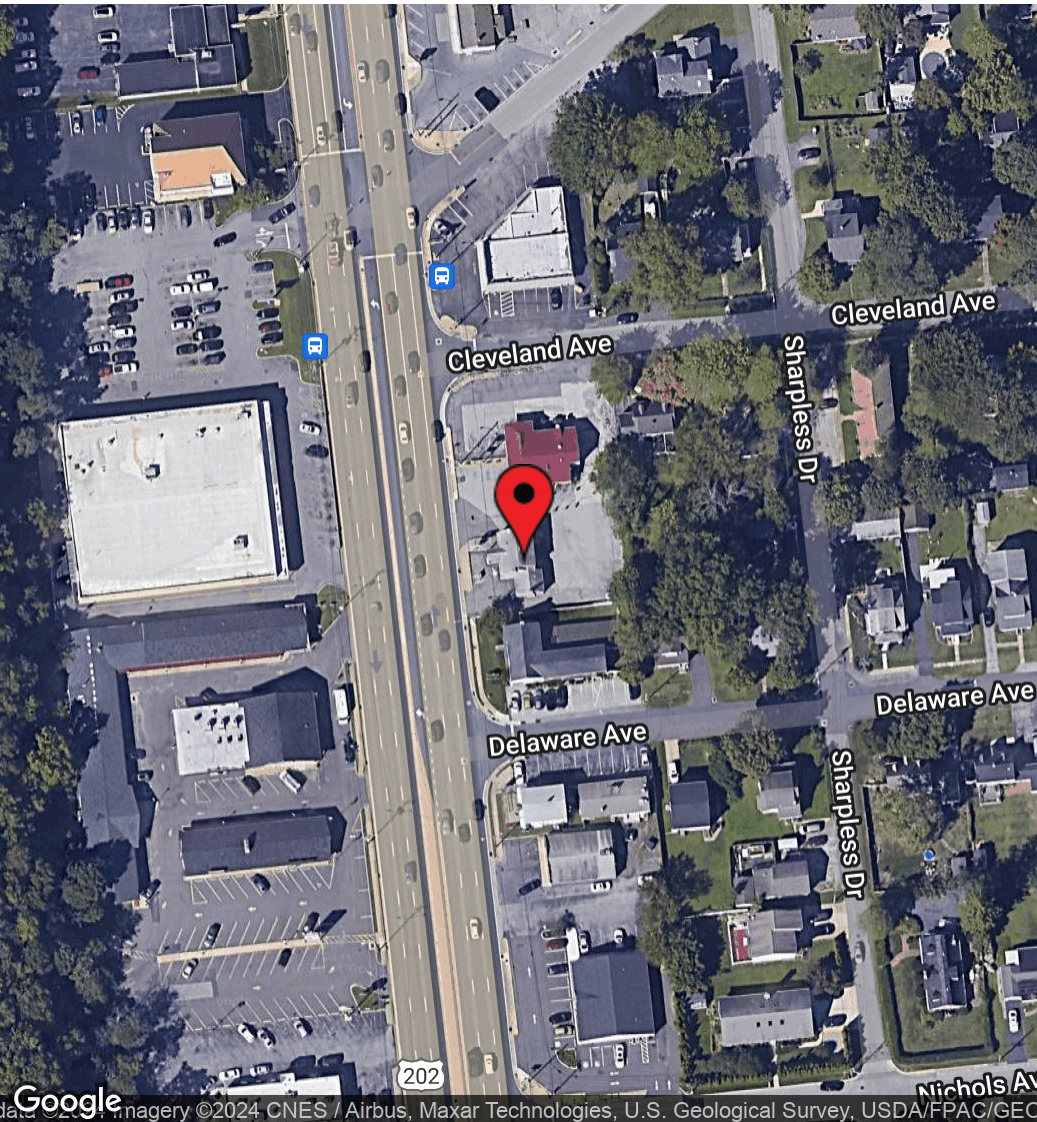
Andy Fox
afox@dsmre.com
302.283.1800 Office
302.229.1304 Cell

DSM Commercial
Real Estate Services
3304 Old Capitol Trail
Wilmington, DE 19808
dsmre.com



3003 Concord Pike
Wilmington, DE 19803

RETAIL PROPERTY FOR LEASE



For More Information, Contact:

Andy Fox
afox@dsmre.com
302.283.1800 Office
302.229.1304 Cell

DSM Commercial
Real Estate Services
3304 Old Capitol Trail
Wilmington, DE 19808
dsmre.com