

SALE

Plaza Del Sol

PAD SITES NEAR 700 SIXTH ST.

Socorro, NM 87801

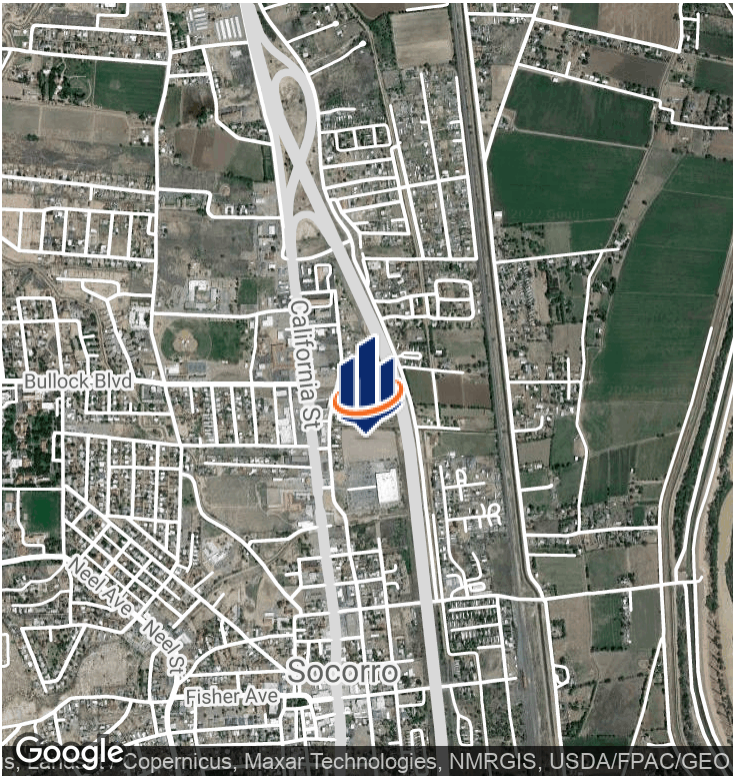
PRESENTED BY:

WALT ARNOLD, CCIM, SIOR
Managing Director
O: 505.256.1255
C: 505.269.9358
walt.arnold@svn.com

STEVE LYON, CCIM
Senior Advisor
O: 505.256.7573 x1111
C: 505.934.9994
steve.lyon@svn.com



PROPERTY SUMMARY



OFFERING SUMMARY

SALE PRICE:	\$217,105 - \$2,700,720
LOT SIZE:	8.694 Acres
MARKET:	Socorro
APN:	001-092-0049.0B

WALT ARNOLD, CCIM, SIOR
Managing Director
O: 505.256.1255 | C: 505.269.9358
walt.arnold@svn.com

STEVE LYON, CCIM
Senior Advisor
O: 505.256.7573 x1111 | C: 505.934.9994
steve.lyon@svn.com

PLAZA DEL SOL | Pad Sites Near 700 Sixth St. Socorro, NM 87801

We obtained the information above from sources we believe to be reliable. However, we have not verified its accuracy and make no guarantee, warranty or representation about it. It is submitted subject to the possibility of errors, omissions, change of price, rental or other conditions, prior sale, lease or financing, or withdrawal without notice. We include projections, opinions, assumptions or estimates for example only, and they may not represent current or future performance of the property. You and your tax and legal advisors should conduct your own investigation of the property and transaction. All SVN offices are independently owned and operated.

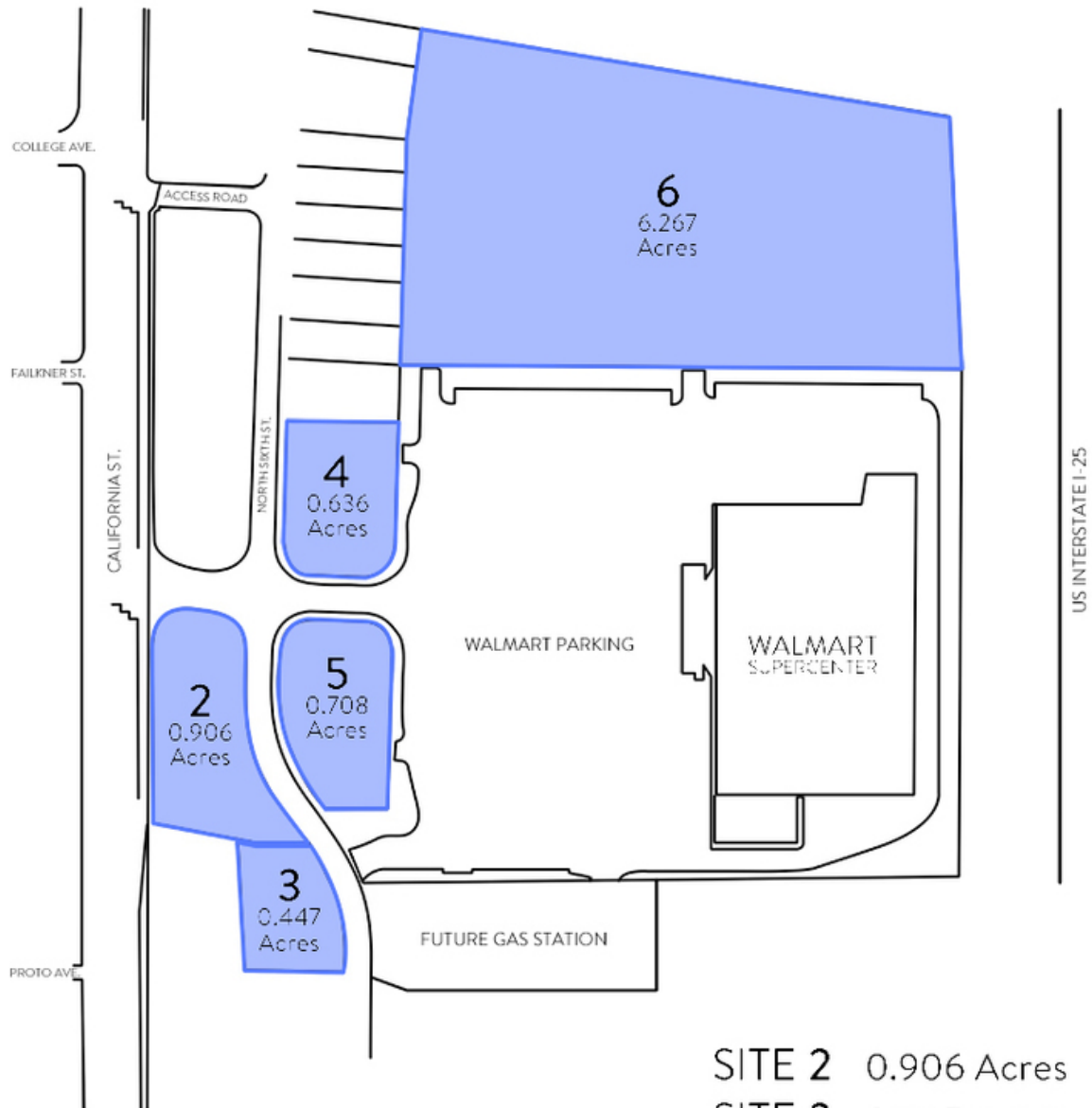
PROPERTY OVERVIEW

Plaza del Sol is located directly in the center of Socorro New Mexico's commercial district. There are a total of seven (7) pad sites. Wal-Mart anchors pad site seven, the largest pad (13+ acres). With the opening of Socorro's Subway in January, there are five (5) remaining pad sites: (all measurements are approximate) All pad sites offer incredible exposure to Interstate 25, I-25, and California Street, which is Socorro's main street.

PROPERTY HIGHLIGHTS

- In the center of Socorro New Mexico's commercial district
- Five (5) available pad sites
- Largest available pad (6.267 acres)
- Opening of Socorro Subway
- Incredible exposure to Interstate 25, I-25, and California Street

SITE PLAN

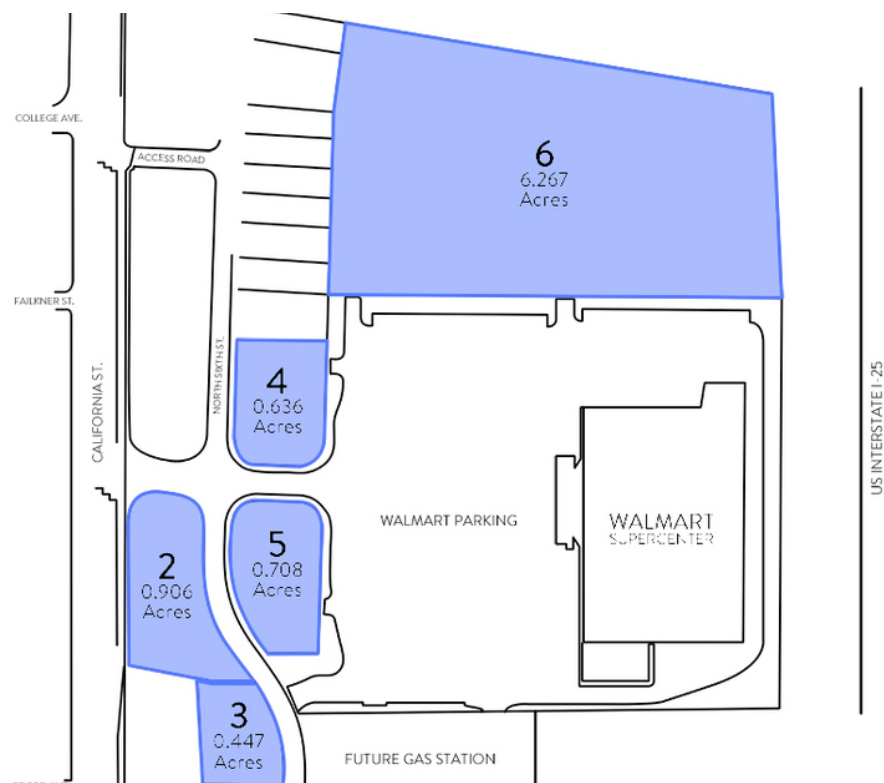


SITE 2 0.906 Acres
 SITE 3 0.447 Acres
 SITE 4 0.636 Acres
 SITE 5 0.708 Acres
 SITE 6 6.267 Acres

WALT ARNOLD, CCIM, SIOR
 Managing Director
 O: 505.256.1255 | C: 505.269.9358
 walt.arnold@svn.com

STEVE LYON, CCIM
 Senior Advisor
 O: 505.256.7573 x1111 | C: 505.934.9994
 steve.lyon@svn.com

LAND LOTS



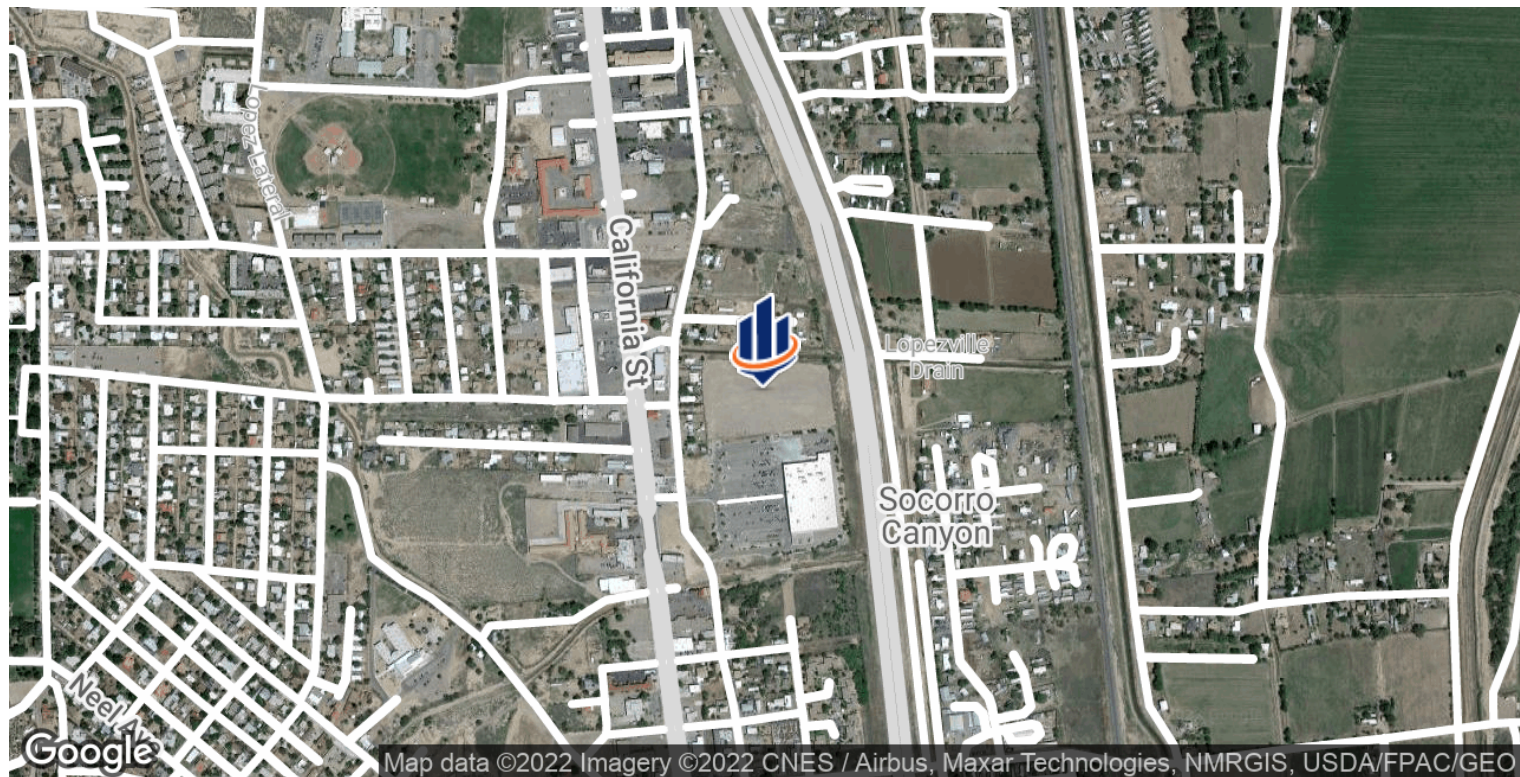
OF LOTS 5 | TOTAL LOT SIZE 0.447 - 6.267 ACRES | TOTAL LOT PRICE \$217,105 - \$2,700,720 | BEST USE -

STATUS	LOT #	SIZE	PRICE
Available	2	0.906 Acres	\$600,000
Available	3	0.447 Acres	\$217,105
Available	4	0.636 Acres	\$311,672
Available	5	0.708 Acres	\$350,039
Available	6	6.267 Acres	\$2,700,720

WALT ARNOLD, CCIM, SIOR
Managing Director
O: 505.256.1255 | C: 505.269.9358
walt.arnold@svn.com

STEVE LYON, CCIM
Senior Advisor
O: 505.256.7573 x1111 | C: 505.934.9994
steve.lyon@svn.com

LOCATION MAP



WALT ARNOLD, CCIM, SIOR
 Managing Director
 O: 505.256.1255 | C: 505.269.9358
 walt.arnold@svn.com

STEVE LYON, CCIM
 Senior Advisor
 O: 505.256.7573 x1111 | C: 505.934.9994
 steve.lyon@svn.com

KEY FACTS

0

Population



Average Household Size

0.0

Median Age

\$0

Median Household Income

EDUCATION

N/A%

No High School Diploma



N/A%

High School Graduate



N/A%

Some College



N/A%

Bachelor's/Grad/Prof Degree

BUSINESS



29

Total Businesses



296

Total Employees

EMPLOYMENT

White Collar

Blue Collar

Services

0.0%

Unemployment Rate

INCOME



\$0

Median Household Income



\$0

Per Capita Income



\$0

Median Net Worth

Households By Income

The largest group: <\$15,000 (0.0%)

The smallest group: <\$15,000 (0.0%)

Indicator	Value	Difference	
<\$15,000	0.0%	-21.6%	
\$15,000 - \$24,999	0.0%	-16.9%	
\$25,000 - \$34,999	0.0%	-14.4%	
\$35,000 - \$49,999	0.0%	-14.6%	
\$50,000 - \$74,999	0.0%	-13.7%	
\$75,000 - \$99,999	0.0%	-7.3%	
\$100,000 - \$149,999	0.0%	-7.4%	
\$150,000 - \$199,999	0.0%	-3.2%	
\$200,000+	0.0%	-0.9%	

Bars show deviation from Socorro County

KEY FACTS

1,041

Population



Average
Household Size

33.9

Median Age

\$31,490

Median Household
Income

EDUCATION

18%

No High
School
Diploma



28%

High School
Graduate



26%

Some College



27%

Bachelor's/Grad/Prof
Degree

BUSINESS



186

Total Businesses



1,725

Total Employees

EMPLOYMENT



77%

White Collar



12%

Blue Collar



10%

Services

3.9%

Unemployment
Rate

INCOME



\$31,490

Median Household
Income



\$18,893

Per Capita Income



\$19,489

Median Net Worth

Households By Income

The largest group: <\$15,000 (22.0%)

The smallest group: \$200,000+ (0.2%)

Indicator	Value	Difference	
<\$15,000	22.0%	+0.4%	
\$15,000 - \$24,999	18.4%	+1.5%	
\$25,000 - \$34,999	13.6%	-0.8%	
\$35,000 - \$49,999	11.8%	-2.8%	
\$50,000 - \$74,999	16.8%	+3.1%	
\$75,000 - \$99,999	6.4%	-0.9%	
\$100,000 - \$149,999	6.2%	-1.2%	
\$150,000 - \$199,999	4.8%	+1.6%	
\$200,000+	0.2%	-0.7%	

Bars show deviation from
Socorro County

KEY FACTS

5,232

Population



2.1

Average Household Size

34.6

Median Age

\$31,460

Median Household Income

EDUCATION

20%

No High School Diploma



31%

High School Graduate



26%

Some College



24%

Bachelor's/Grad/Prof Degree

BUSINESS



286

Total Businesses



2,742

Total Employees

EMPLOYMENT



70%

White Collar



15%

Blue Collar



15%

Services

5.7%

Unemployment Rate

INCOME



\$31,460

Median Household Income



\$18,942

Per Capita Income



\$18,873

Median Net Worth

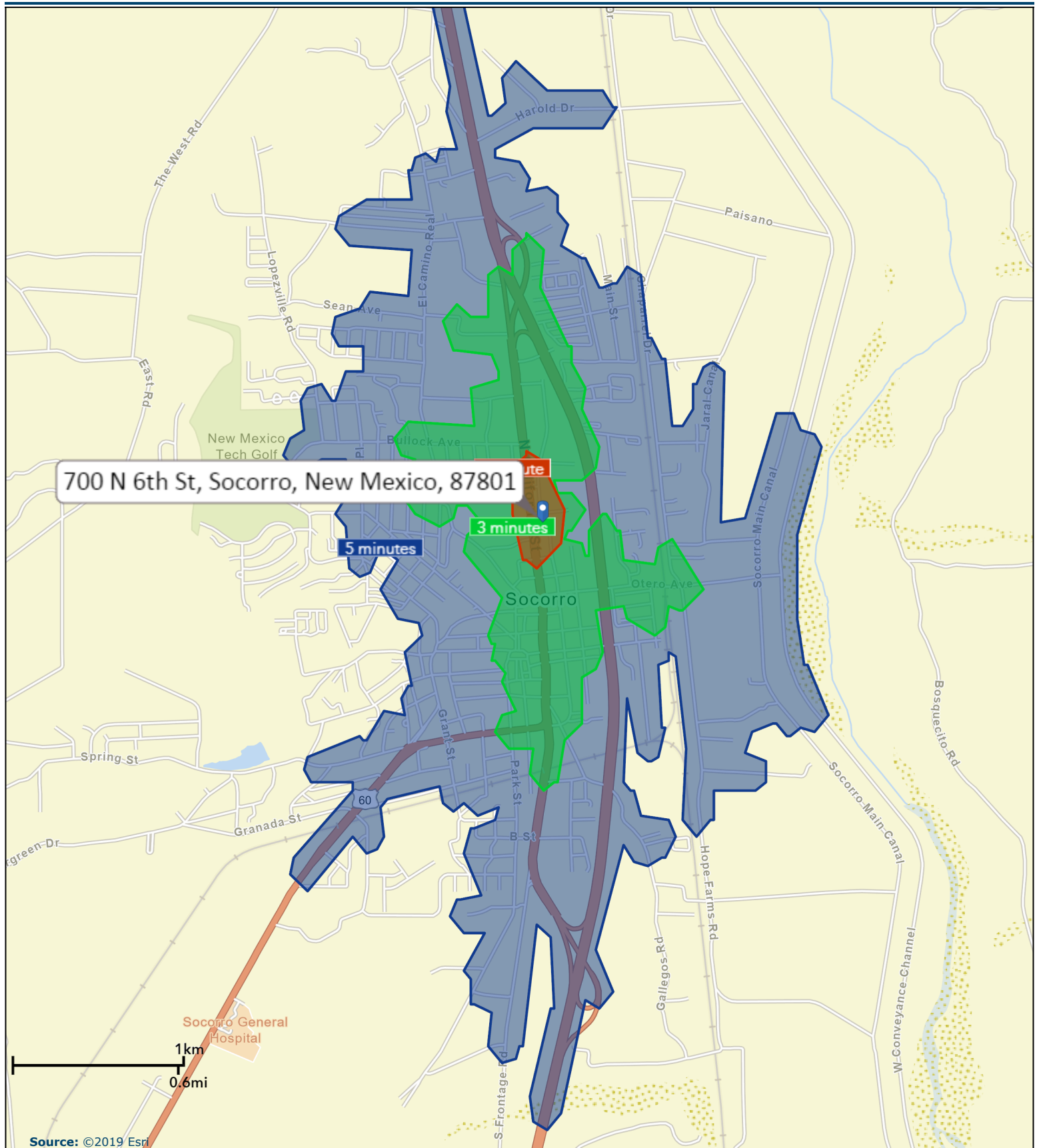
Households By Income

The largest group: <\$15,000 (23.2%)

The smallest group: \$200,000+ (0.4%)

Indicator	Value	Difference	
<\$15,000	23.2%	+1.6%	
\$15,000 - \$24,999	16.8%	-0.1%	
\$25,000 - \$34,999	14.0%	-0.4%	
\$35,000 - \$49,999	13.9%	-0.7%	
\$50,000 - \$74,999	14.4%	+0.7%	
\$75,000 - \$99,999	6.1%	-1.2%	
\$100,000 - \$149,999	7.1%	-0.3%	
\$150,000 - \$199,999	4.0%	+0.8%	
\$200,000+	0.4%	-0.5%	

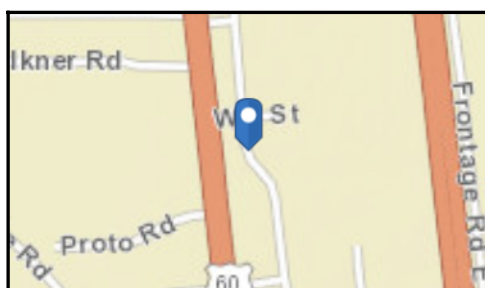
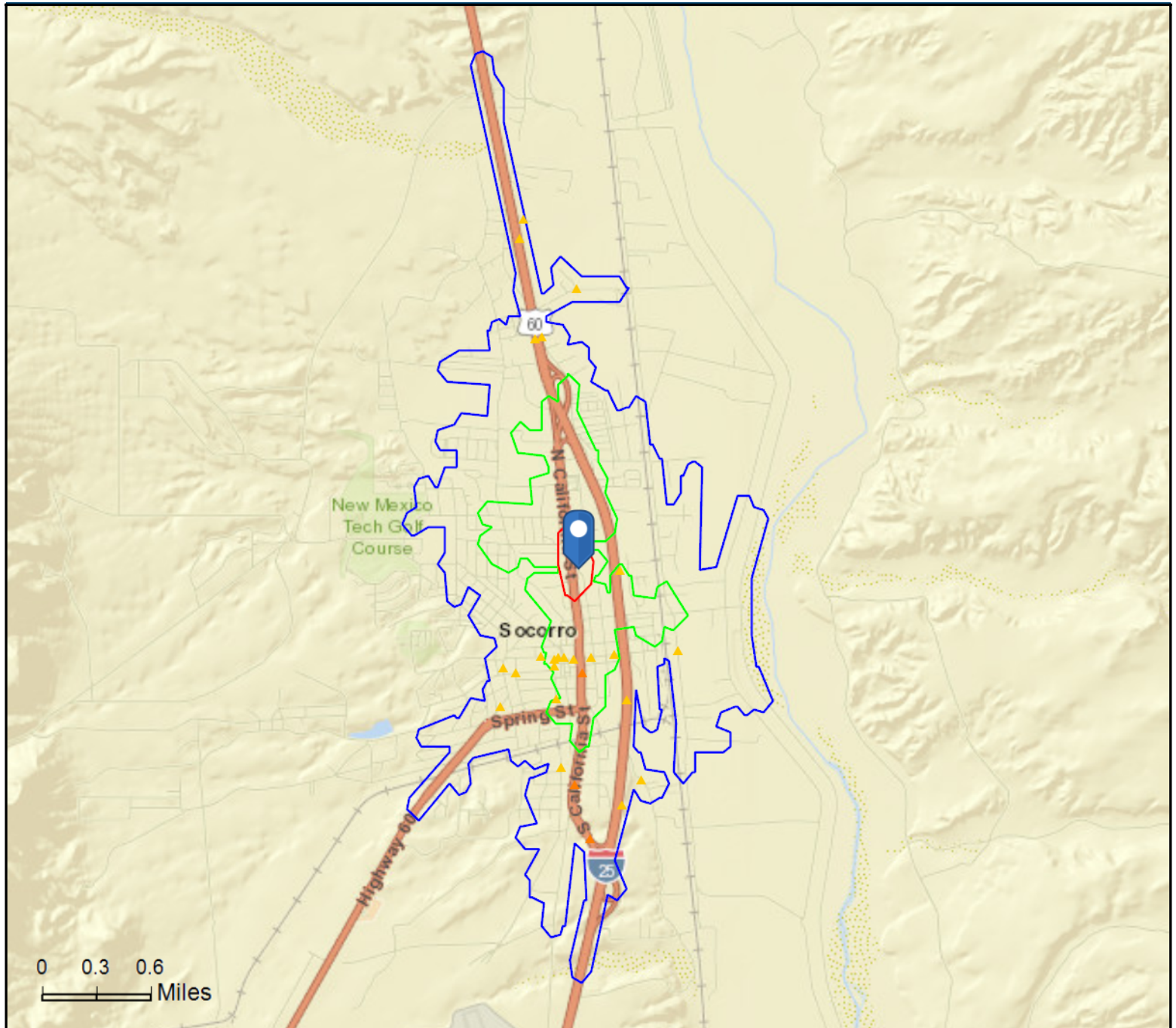
Bars show deviation from Socorro County



Traffic Count Map

700 N 6th St, Socorro, New Mexico, 87801
Drive Time: 1, 3, 5 minute radii

Prepared by Esri
Latitude: 34.06438
Longitude: -106.89176



Average Daily Traffic Volume
 ▲ Up to 6,000 vehicles per day
 ▲ 6,001 - 15,000
 ▲ 15,001 - 30,000
 ▲ 30,001 - 50,000
 ▲ 50,001 - 100,000
 ▲ More than 100,000 per day



Source: ©2019 Kalibrate Technologies (Q3 2019).

February 26, 2020