

RETAIL PROPERTY FOR LEASE

EDINBURGH SPACE FOR LEASE

200 CARMICHAEL WAY, CHESAPEAKE, VA 23322



Presented By:
Chris Arney
Sales & Leasing Associate
757.472.2648
chris@katsias.com

John Katsias
President
757.490.3585
jk@katsias.com

EDINBURGH SPACE FOR LEASE

200 CARMICHAEL WAY, CHESAPEAKE, VA 23322

EXECUTIVE SUMMARY



OFFERING SUMMARY

Available SF: 1,433 - 4,473 SF

Lease Rate: Negotiable

Year Built: 2009

Building Size: 13,141 SF



PROPERTY HIGHLIGHTS

- Great location with direct access off the Chesapeake Express Way
- Great Visibility
- Chic Fil-A and Buffalo Wild Wings are adjacent to the shopping center
- Anchor Tenants in the Edinborough complex include Target, Wal Mart, and Home Depot.
- Other Tenants include Verizon, Mattress Firm, Kay Jewelers, Anytime Fitness, Virginia ABC, Cracker Barrel, McDonalds, Wendy's, Wa Wa, and many local and regional Tenants.

DEMOGRAPHICS	1 Mile	5 Miles	10 Miles
Total Households:	737	19,726	75,812
Total Population:	2,072	59,303	213,936
Average HH Income:	\$108,193	\$105,050	\$85,780



Brokerage with vision. Real estate with results.

Presented By:

Chris Arney | Sales & Leasing Associate
757.472.2648
chris@katsias.com

John Katsias | President
757.490.3585
jk@katsias.com

2901 S. Lynnhaven Road Suite 340, Virginia Beach, VA 23452 | 757.472.2648 | www.katsias.com

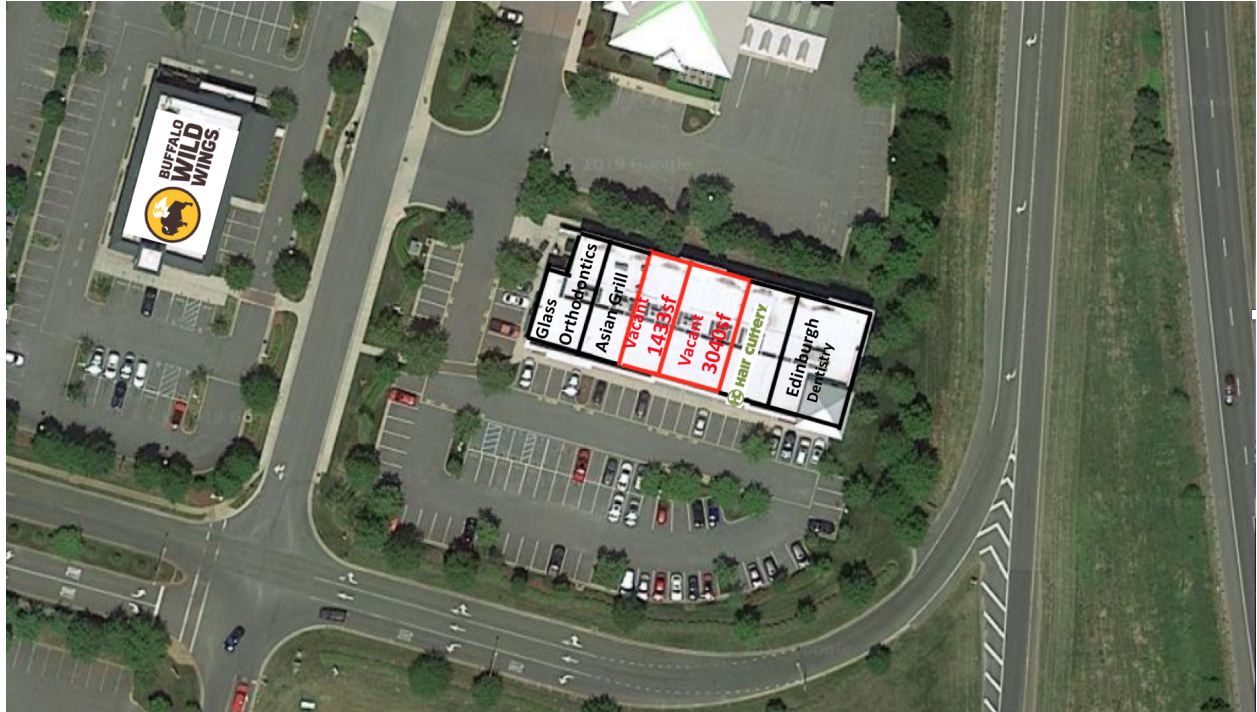
We have in preparing this information used our best endeavors to ensure that the information contained herein is true and accurate, but accept no responsibility and disclaim all liability in respect of any errors, inaccuracies or misstatements contained herein. Prospective purchasers and/or lessors should make their own inquiries to verify the information contained herein.

RETAIL PROPERTY FOR LEASE

EDINBURGH SPACE FOR LEASE

200 CARMICHAEL WAY, CHESAPEAKE, VA 23322

AVAILABLE SPACES



SPACE	SUITE	LEASE RATE	SIZE (SF)	CAM CHARGE/SF
200 Carmichael Way	604	NEGOTIABLE	1,433 - 4,473 SF	
200 Carmichael Way	606-8	NEGOTIABLE	1,500 - 4,473 SF	



Brokerage with vision. Real estate with results.

Presented By:

Chris Arney | Sales & Leasing Associate
757.472.2648
chris@katsias.com

John Katsias | President
757.490.3585
jk@katsias.com

2901 S. Lynnhaven Road Suite 340, Virginia Beach, VA 23452 | 757.472.2648 | www.katsias.com

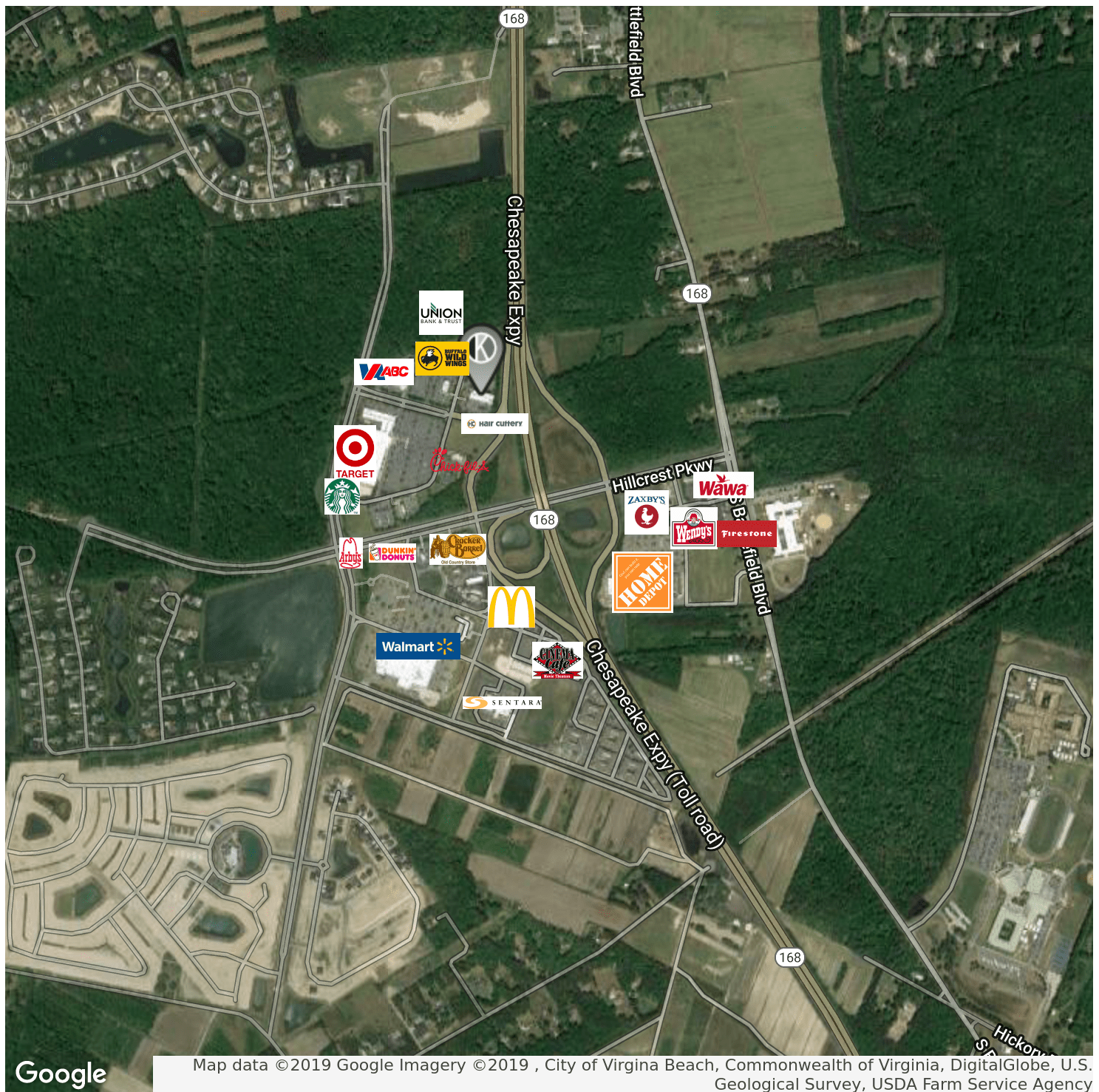
We have in preparing this information used our best endeavors to ensure that the information contained herein in true and accurate, but accept no responsibility and disclaim all liability in respect of any errors, inaccuracies or misstatements contained herein. Prospective purchasers and/or lessors should make their own inquiries to verify the information contained herein.

RETAIL PROPERTY FOR LEASE

EDINBURGH SPACE FOR LEASE

200 CARMICHAEL WAY, CHESAPEAKE, VA 23322

RETAILER MAP



Brokerage with vision. Real estate with results.

Presented By:

Chris Arney | Sales & Leasing Associate

757.472.2648

chris@katsias.com

John Katsias | President

757.490.3585

jk@katsias.com

2901 S. Lynnhaven Road Suite 340, Virginia Beach, VA 23452 | 757.472.2648 | www.katsias.com

We have in preparing this information used our best endeavors to ensure that the information contained herein in true and accurate, but accept no responsibility and disclaim all liability in respect of any errors, inaccuracies or misstatements contained herein. Prospective purchasers and/or lessors should make their own inquiries to verify the information contained herein.

RETAIL PROPERTY FOR LEASE

EDINBURGH SPACE FOR LEASE

200 CARMICHAEL WAY, CHESAPEAKE, VA 23322

SITE PLAN



Brokerage with vision. Real estate with results.

Presented By:

Chris Arney | Sales & Leasing Associate

757.472.2648

chris@katsias.com

John Katsias | President

757.490.3585

jk@katsias.com

2901 S. Lynnhaven Road Suite 340, Virginia Beach, VA 23452 | 757.472.2648 | www.katsias.com

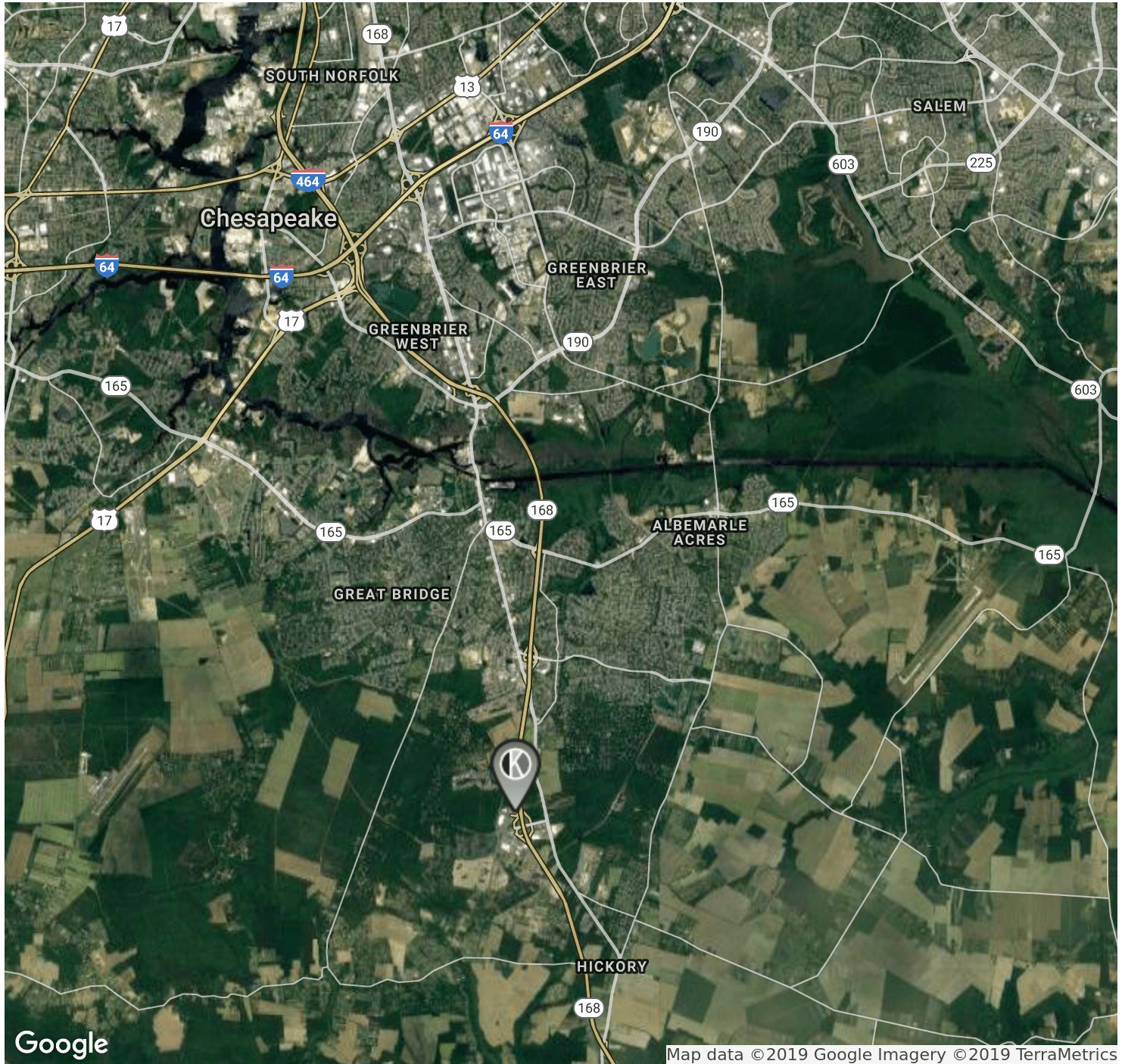
We have in preparing this information used our best endeavors to ensure that the information contained herein in true and accurate, but accept no responsibility and disclaim all liability in respect of any errors, inaccuracies or misstatements contained herein. Prospective purchasers and/or lessors should make their own inquiries to verify the information contained herein.

RETAIL PROPERTY FOR LEASE

EDINBURGH SPACE FOR LEASE

200 CARMICHAEL WAY, CHESAPEAKE, VA 23322

LOCATION MAP



Brokerage with vision. Real estate with results.

Presented By:

Chris Arney | Sales & Leasing Associate

757.472.2648

chris@katsias.com

John Katsias | President

757.490.3585

jk@katsias.com

2901 S. Lynnhaven Road Suite 340, Virginia Beach, VA 23452 | 757.472.2648 | www.katsias.com

We have in preparing this information used our best endeavors to ensure that the information contained herein is true and accurate, but accept no responsibility and disclaim all liability in respect of any errors, inaccuracies or misstatements contained herein. Prospective purchasers and/or lessors should make their own inquiries to verify the information contained herein.