



Standard
Change-Makers, Inc.

P.O. Box 36550
Indianapolis, IN 46236-0550
3130 N. Mitthoeffer Rd.
Indianapolis, IN 46235-0550
(317) 899-6966
FAX (317) 899-6977
WEB: www.standardchange.com

MODULAR MACHINE SERIES

Models Included:

MC100, MC200,
MC300, MC400 -RL
MC500, MC700,
MC900's, BX and
BCX Series.

Installation & Instruction Manual

8M00420 REV. 20

Hamilton Manufacturing Corporation

1026 Hamilton Dr. Holland, OH 43528 • Phone: 419-867-4858/800-837-5561 • Fax: 419-867-4867 • www.hamiltonmfg.com

XE Validator Operational Manual

Hamilton Manufacturing Corp.

1026 Hamilton Dr. Holland, OH 43528 • Phone: 419-867-4858/800-837-5561 • Fax: 419-867-4857 • www.hamiltonmfg.com

Gold Line® ACW Credit Card System Operations, Setup & Programming Manual

Hamilton Manufacturing Corporation

1026 Hamilton Dr. Holland, OH 43528 • Phone: 419-867-4858/800-837-5561 • Fax: 419-867-4867 • www.hamiltonmfg.com

HSH Hopper Operational Manual

Hamilton Manufacturing Corporation

1026 Hamilton Dr. Holland, OH 43528 • Phone: 419-867-4858/800-837-5561 • Fax: 419-867-4867 • www.hamiltonmfg.com

Single Stacker Operational Manual



CARWASH SYSTEMS AND EQUIPMENT

PARTS

AUTO ACCESSORIES

PROFESSIONAL DETAILING

[Shop Online](#)[New Customer?](#)[Request a Catalog](#)[About Us](#)[Customer Service](#)[News And Events](#)[Resources](#)[Service & Support](#)[Contact Us](#)[Search](#)

Complete Carwash Systems and Equipment

Find Equipment

Equipment And Systems Search

[Find](#)

Complete Systems Small

Car Wash System 35-DTP
Car Wash System 45-CP
Car Wash System 60-47
Car Wash System 60-TB

Medium

Car Wash System 90-07
Car Wash System 90-55
Car Wash System 95-TB

Large

Car Wash System 95-10
Car Wash System 110-06
Car Wash System 110-07
Car Wash System 120-06
Car Wash System 130-TB

Fleet Systems

Fleet-o-Matic

Equipment

Tunnel Equipment

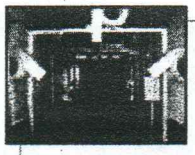
Air Dryers
Arches
Controls
Conveyor
Correlators
Foamers
High Pressure Wash
Mitters
Rain Arches
Side Washers
Tire Treatments
Top Brushes
Under Body Washes
Wipe-O-Matic
Wrap Arounds

Support Equipment

Air Compressors
Chemical Mixing Tank
Detailing
Dispenser Station
H. Press. Pump Stations
Hot Water Heaters
Hydraulic Power Packs
L. Press. Pump Stations
Prep Unit
Spot Free Rinsing
Vacuums
Washer Extractors
Water Reclaim System

FACTORY-DIRECT VALUE AND BENEFITS

Our car wash systems are one of the best in the industry and are sold factory-direct to our customers. But most importantly, they are supported with an unprecedented service and customer care before and after the sale.



Product Videos

Click here for a complete listing of all product videos.



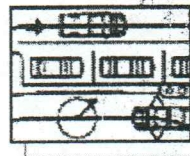
Product Manuals

Click here for a complete listing of all product manuals.



Product Gallery

Click here to see pictures of our equipment in action.



Sample Car Wash Layouts

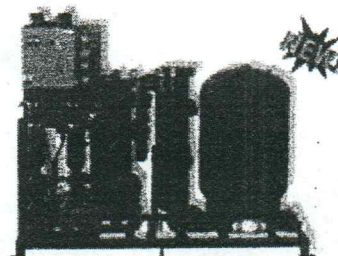
Click here to view sample car wash layouts.

Featured Products

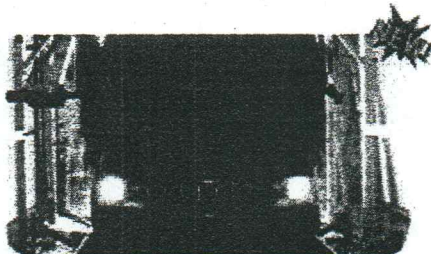
[Click here to see a list of new products and product features.](#)



Sonny's Spot Free Rinse System
Starting From: \$6,723.00



Sonny's Reclaim System
Value Price: \$23,995.00



LightTouch Top Brush
Introductory price: \$10,995.00



Turbo Blaster Spinner
Value Price: \$999.00

Good website

What type of car wash is right for **YOU?**

[Click Here to find out](#)

To print this article, click on the printer icon below. Then, use the print function in your browser.

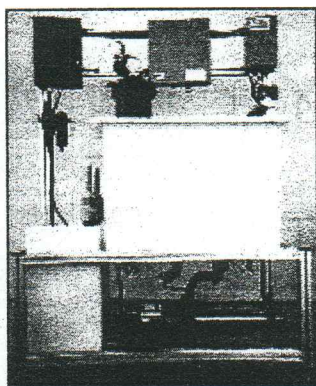


A FEATURED ARTICLE FROM
AutoLaundry
 MARCH 2002

Water Treatment

Chief's Manufacturing & Equipment

South Euclid, Ohio



Chief's Manufacturing has been an innovator in high-pressure arches and components and water reclamation systems since 1985.

What's New/Best Seller The Water Genie is a patented, self-cleaning best-selling water reclaim system.

Advantages/Features Water Genie comes in 25, 50, 75, and 100 gallon-per-minute versions. All systems produce five-micron water. This water can be used for prep-guns, high-pressure arches and components, cloth equipment, and self-serve washes. Fresh water is required only for waxes, rinses and foamers. The key to the Water

Genie is its patented self-cleaning filters. These eliminate the need for carbon or sand filters and no back flushing is required. The product has no computers and few moving parts.

Customer/Operator Support As both an operator and manufacturer, customer support is available seven days a week. All equipment comes with a one-year warranty. As service operators, Water Genie pumps and most parts are available at W.W. Grainger's.

Delivery/Installation Delivery of Water Genie reclaim systems is four to six weeks. Installation time is approximately four hours.

Contact Chief's Manufacturing and Equipment Co. (Bill Consolo), 4325 Monticello Blvd., South Euclid, OH 44121. Toll Free: (800) 433-7758. Fax: (216) 291-4222. E-mail: bconsolo@aol.com.

Waste Water Management Inc.

Jupiter, Florida

Waste Water Management Inc. is a leading water treatment firm that engineers and manufactures systems that reduce sewer costs and water consumption.

WASH TECH

3249 Woodsen Circle
West Columbia, S.C. 29170
803-917-8798

Professional Car Wash Consultants

Office: 803-791-0840
1-888-CLEAN-88
Fax: 803-936-9378

Better Car Wash Equipment & Supply

"The only company good enough to be named Better"

Pete's 2404 Augusta Road
son West Columbia, SC 29169 *CPA*

Rhett Denton
Mobile: 803-920-3928

Pete Denton
Mobile: 803-920-2841