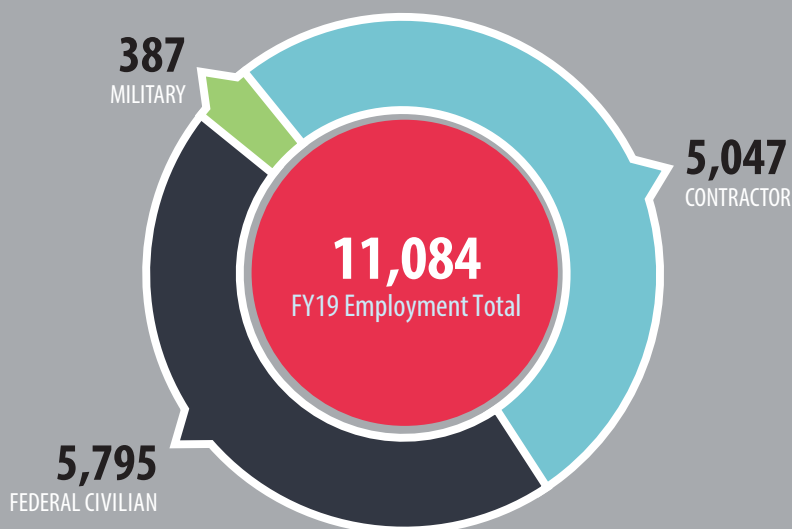




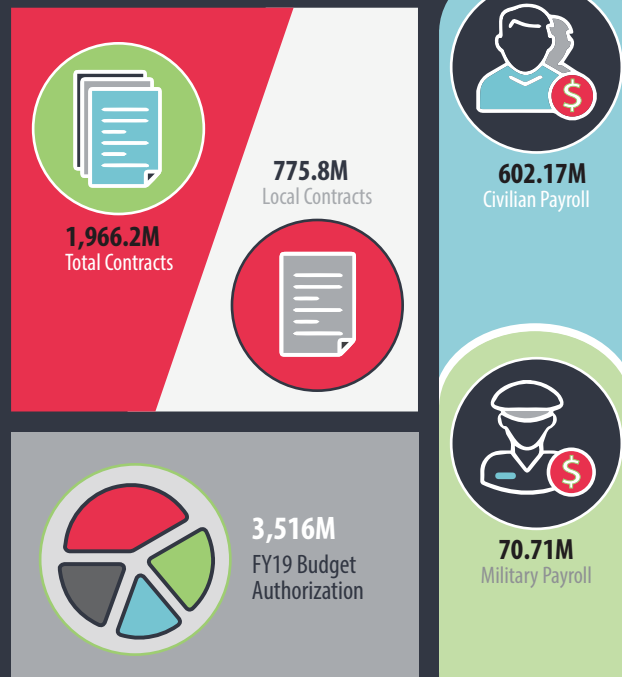
NAVAL SUPPORT FACILITY DAHLGREN, VIRGINIA – 2020 IMPACT SUMMARY

NAVAL SUPPORT FACILITY (NSF) DAHLGREN, established in 1918, includes host command Naval Support Activity South Potomac (NSASP) and major tenant commands Naval Surface Warfare Center Dahlgren Division (NSWCDD), the AEGIS Training and Readiness Center (ATRC), the Center for Surface Combat Systems (CSCS), the Sea-Based Weapons Systems component of the Missile Defense Agency (MDA), the Air Force 18th Space Control Squadron Detachment One (SPCS Det 1), the Naval Surface and Mine Warfighting Development Center (SMWDC) Detachment Dahlgren and the Joint Warfare Analysis Center (JWAC). Also on the installation are support commands Naval Facilities Engineering Command (NAVFAC) Washington Public Works Dahlgren Site, Naval Supply Systems Command Fleet Logistics Center Norfolk Dahlgren office (NAVSUP FLCN-DL), Naval Branch Health Clinic Dahlgren, Navy Exchange, Commissary and Dahlgren School.

EMPLOYMENT DATA



ECONOMIC IMPACT SUMMARY



NOTES:

- Naval Support Activity South Potomac personnel numbers, payroll, budget and contracts encompass both NSF Dahlgren and NSF Indian Head.
- NSWC Dahlgren Division numbers encompass Dahlgren site only.
- AEGIS Training & Readiness Center (ATRC) military payroll for permanent duty station personnel assigned to the command; payroll data does not include more than 1,800 students who trained at ATRC in FY19.
- Center for Surface Combat Systems (CSCS) is the parent command of the AEGIS Training and Readiness Center (ATRC); CSCS is assigned an overall budget for all of its learning sites and detachments.
- Contractor personnel utilizing on- and/or off-base work spaces.
- Dahlgren School numbers do not include substitute teachers.

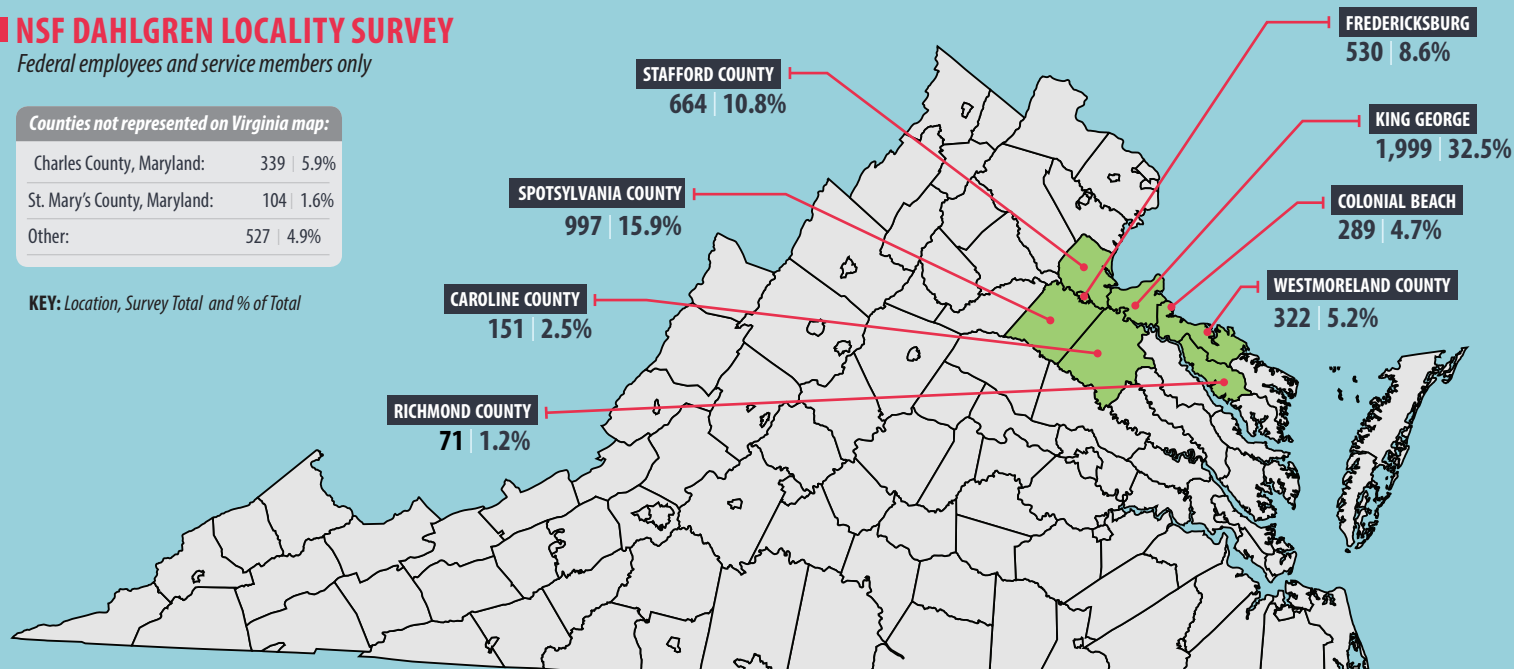
NSF DAHLGREN LOCALITY SURVEY

Federal employees and service members only

Counties not represented on Virginia map:

Charles County, Maryland:	339 5.9%
St. Mary's County, Maryland:	104 1.6%
Other:	527 4.9%

KEY: Location, Survey Total and % of Total

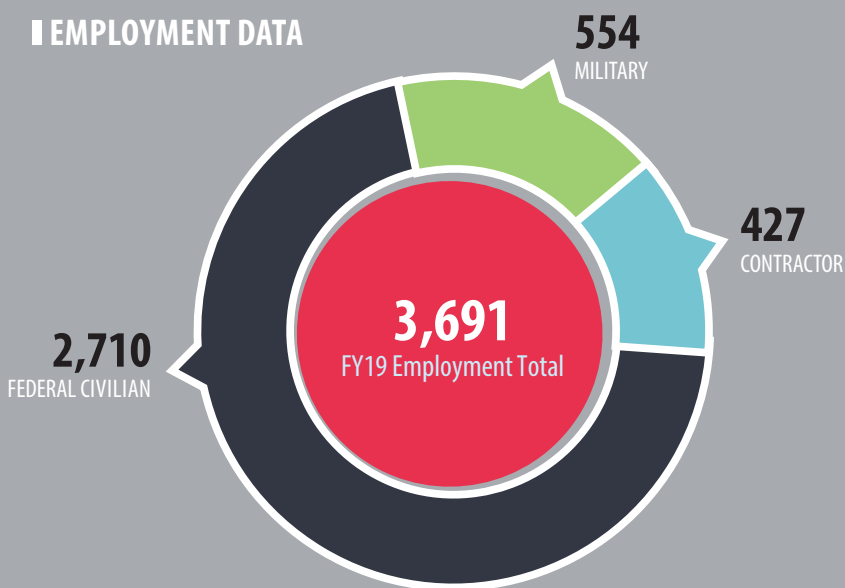




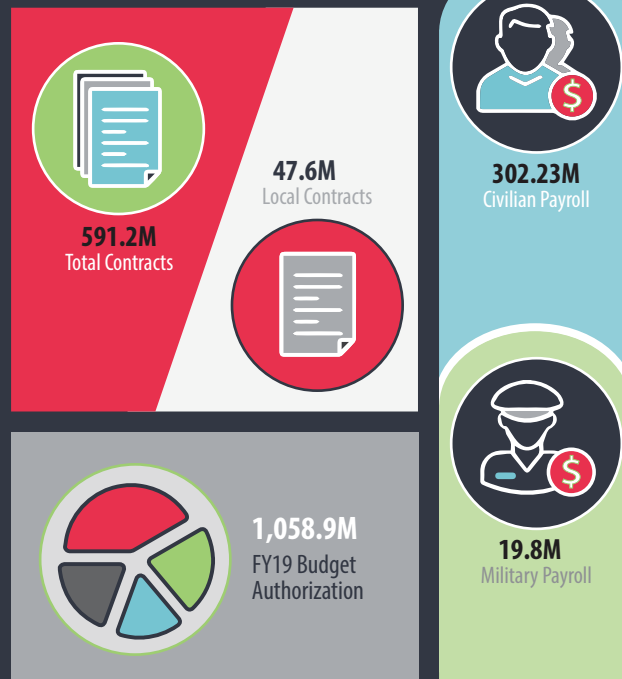
NAVAL SUPPORT FACILITY INDIAN HEAD – 2020 IMPACT SUMMARY

NAVAL SUPPORT FACILITY (NSF) INDIAN HEAD, established in 1890, includes host command Naval Support Activity South Potomac (NSASP) and major tenant commands Naval Surface Warfare Center Indian Head Explosive Ordnance Disposal Technology Division (NSWC IHEODTD), the Marine Corps Chemical Biological Incident Response Force (CBIRF), the Naval Ordnance Safety and Security Activity (NOSSA) and Naval Sea Logistics Center (NAVSEALOGCEN) Indian Head. Also on the installation are support commands Naval Facilities Engineering Command (NAVFAC) Washington Public Works Indian Head Site, Naval Supply Systems Command Fleet Logistics Center Norfolk Indian Head office (NAVSUP FLCN-IH), Naval Branch Health Clinic Indian Head and Navy Exchange.

EMPLOYMENT DATA

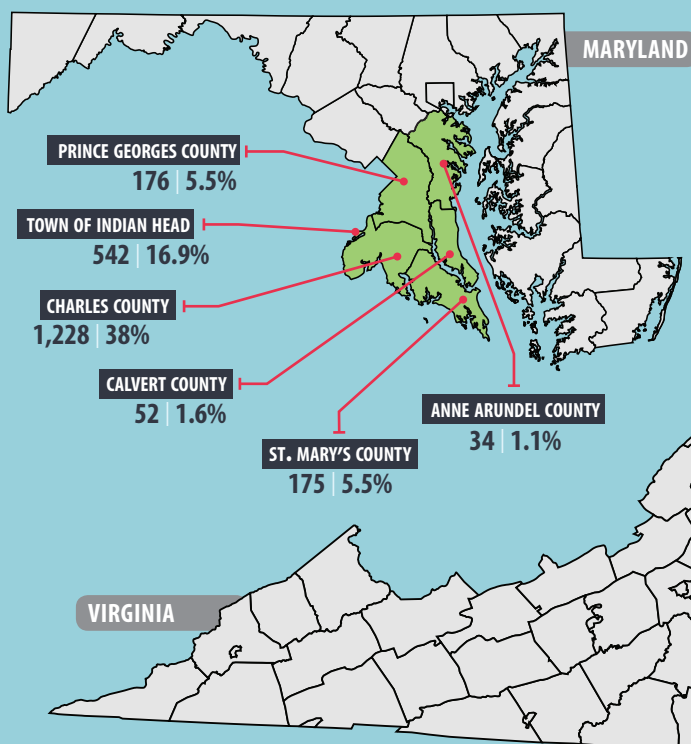


ECONOMIC IMPACT SUMMARY



NOTES:

- Naval Support Activity South Potomac personnel numbers, payroll, budget and contracts encompass both NSF Dahlgren and NSF Indian Head.
- NSWC IHEODTD numbers encompass Indian Head site only.
- Contractor personnel utilizing on- and/or off-base work spaces.

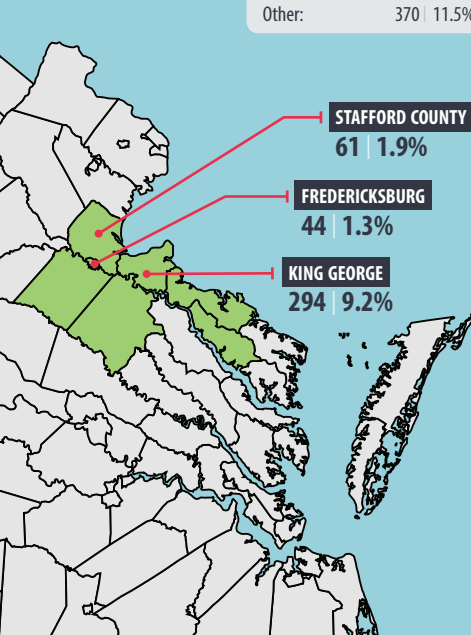


NSF INDIAN HEAD LOCALITY SURVEY

Federal employees and service members only

Not represented on the maps:

Other: 370 | 11.5%



KEY: Location, Survey Total and % of Total