

For Sale/Lease/Build to Suit

Hastings Subdivision

Everest Lane, Meridian, ID 83642



N. Linder Rd.

Linder Road

Fred Meyer

W. Chinden Blvd.



**WinCo
FOODS**

meridian
library
district

Matt Mahoney
Managing Principal
Cell: 208.340.9780
mattm@leeidaho.com

Austin Hopkins
Associate
Cell: 208.995.5944
austinh@leeidaho.com



COMMERCIAL REAL ESTATE SERVICES
LEE & ASSOCIATES IDAHO, LLC

HASTINGS SUBDIVISION - MERIDIAN, ID 83642

Lot & Location Info

Lot	Proposed Lot Size	Proposed Building Size	Proposed Pricing
9	12,728 SF	2,295 SF	SOLD
10	13,055 SF	3,250 SF	SOLD
11	12,946 SF	3,250 SF	SOLD
12	19,000 SF	3,500 SF	SOLD
13	10,902 SF	3,250 SF	\$14.50
14	11,711 SF	3,250 SF	SOLD
15	11,417 SF	3,250 SF	SOLD
16	11,986 SF	3,250 SF	SOLD
17	12,294 SF	3,500 SF	SOLD
18	12,191 SF	3,250 SF	SOLD
19	19,062 SF	5,550 SF	\$15.00

Submarket:	Meridian
Date Available:	Immediately
Building Type:	Land
Building Size:	Varies, See Site Plan
Available Parcels:	Lot #19
Zoning:	L-O
Parcel ID:	R5299430880
Shadow Anchor:	Fred Meyer

Neighboring Tenants:

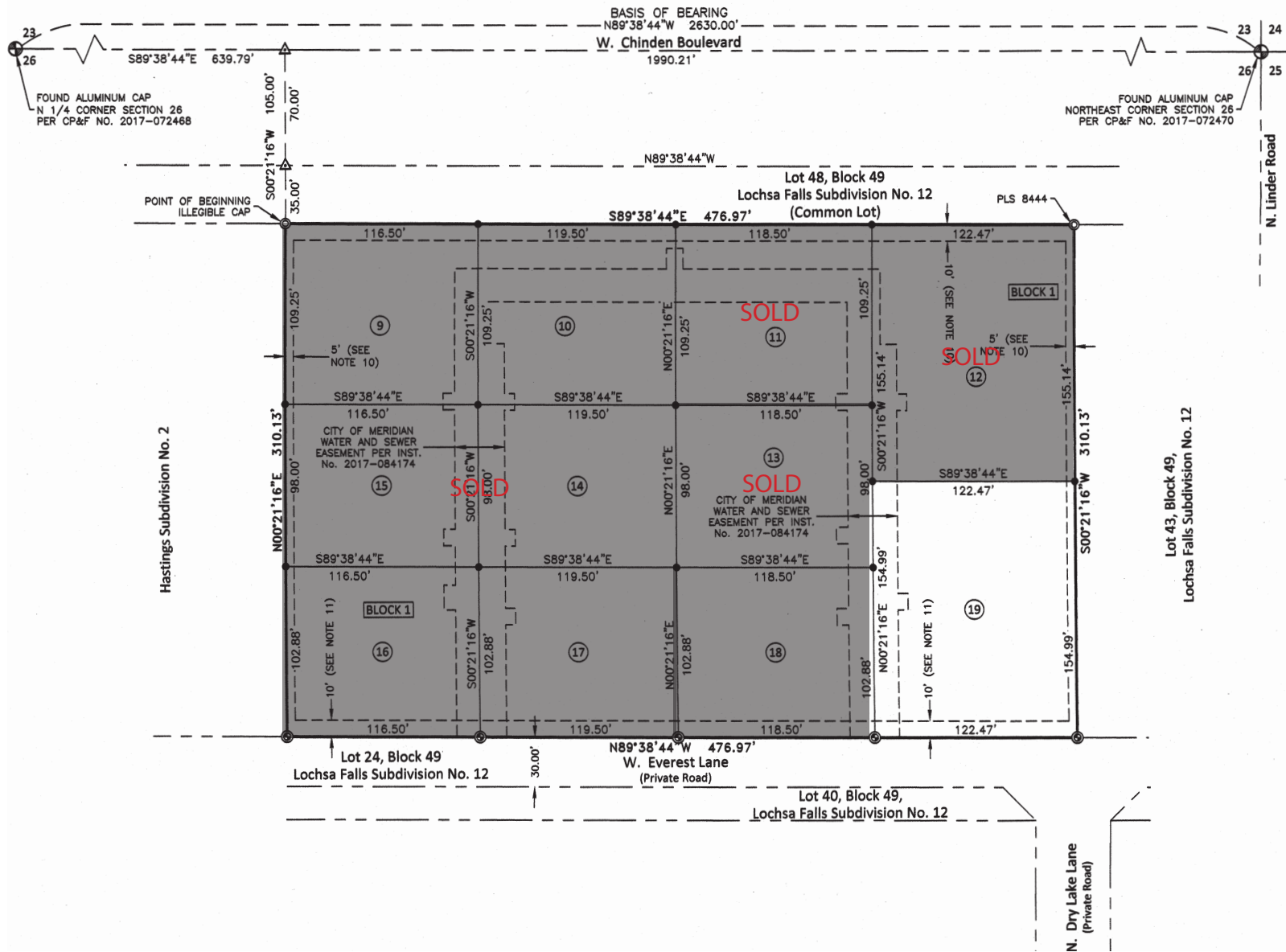
Challenger School
Spurwing Golf Course
LDS Temple
Primary Health Medical Group
River City Veterinary Hospital
Kids Choice Child Care Center
Body Renew Fitness and Training
Idaho Central Credit Union
Taco Bell
McDonald's
Flatbread Neopolitan Pizzeria

Matt Mahoney
Managing Principal
Cell: 208 340 9780
mattm@leeidaho.com

Austin Hopkins
Associate
Cell: 208.995.5944
austinh@leeidaho.com

 **LEE & ASSOCIATES**
COMMERCIAL REAL ESTATE SERVICES
LEE & ASSOCIATES IDAHO, LLC

HASTINGS SUBDIVISION - MERIDIAN, ID 83642



Matt Mahoney
Managing Principal
Cell: 208 340 9780
mattm@leeidaho.com

Austin Hopkins
Associate
Cell: 208.995.5944
austinh@leeidaho.com

LEE & ASSOCIATES
COMMERCIAL REAL ESTATE SERVICES
LEE & ASSOCIATES IDAHO, LLC