

OFFICE BUILDING NEAR AIRPORT

2917 INTERNATIONAL LANE, MADISON, WI

// EXECUTIVE SUMMARY



OFFERING SUMMARY

Available SF: 4,000 - 34,960 SF

Lease Rate: \$15.00 SF/yr (Gross)

Zoning: SE

Cross Streets: International Ln &
Darwin Rd

Traffic Count: 10,350

PROPERTY OVERVIEW

39,960 SF three story class "B" multi-tenant office building on International Lane in Madison Wisconsin. Large number of windows on every floor provides great natural light and fantastic views. Building is in the process of being converting to a multi-tenant property. Each floor is approx. 13,320 SF. Currently have space option ranging from 4,000 - 34,960 SF. Building is elevator served, ADA compliant and has nice covered main entrance. 9' ceiling heights with full wet sprinkler system. New owners are in the process of remodeling the property. On-site parking included. New Landlord is open to building modifications to fit Tenant needs. All Tenant Improvements allowances are negotiable. Asking rate is \$15 SF gross which includes utilities. Tenant responsible for in-suite janitorial, phone/internet and adequate liability insurance.

LOCATION OVERVIEW

Located near the corner of International Lane and Darwin Rd, this property is very close to the entrance to the Dane County Regional Airport and Madison College in the Air Park Business Center.

OFFICE PROPERTY FOR LEASE

OFFICE BUILDING NEAR AIRPORT

2917 INTERNATIONAL LANE, MADISON, WI

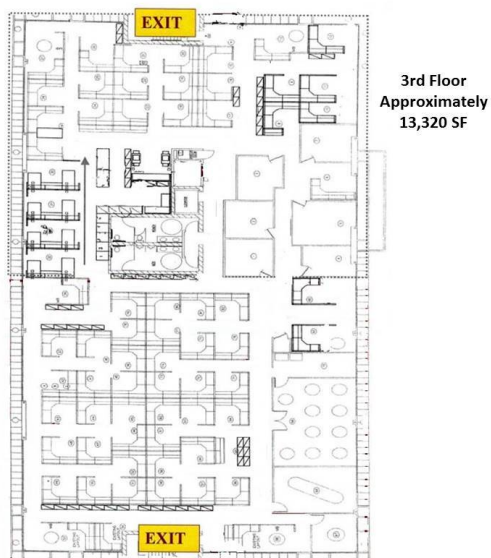
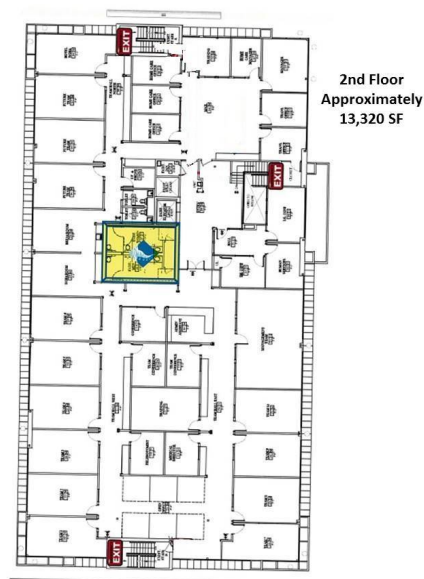
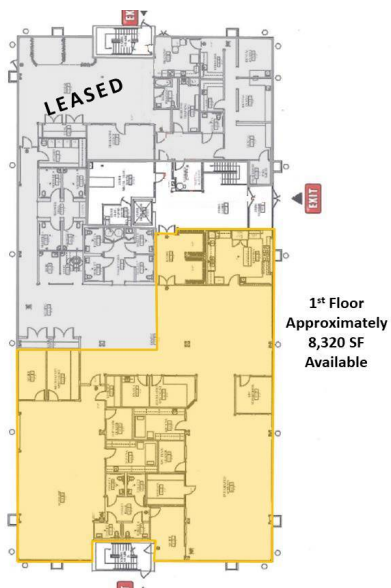
// ADDITIONAL PHOTOS



OFFICE BUILDING NEAR AIRPORT

2917 INTERNATIONAL LANE, MADISON, WI

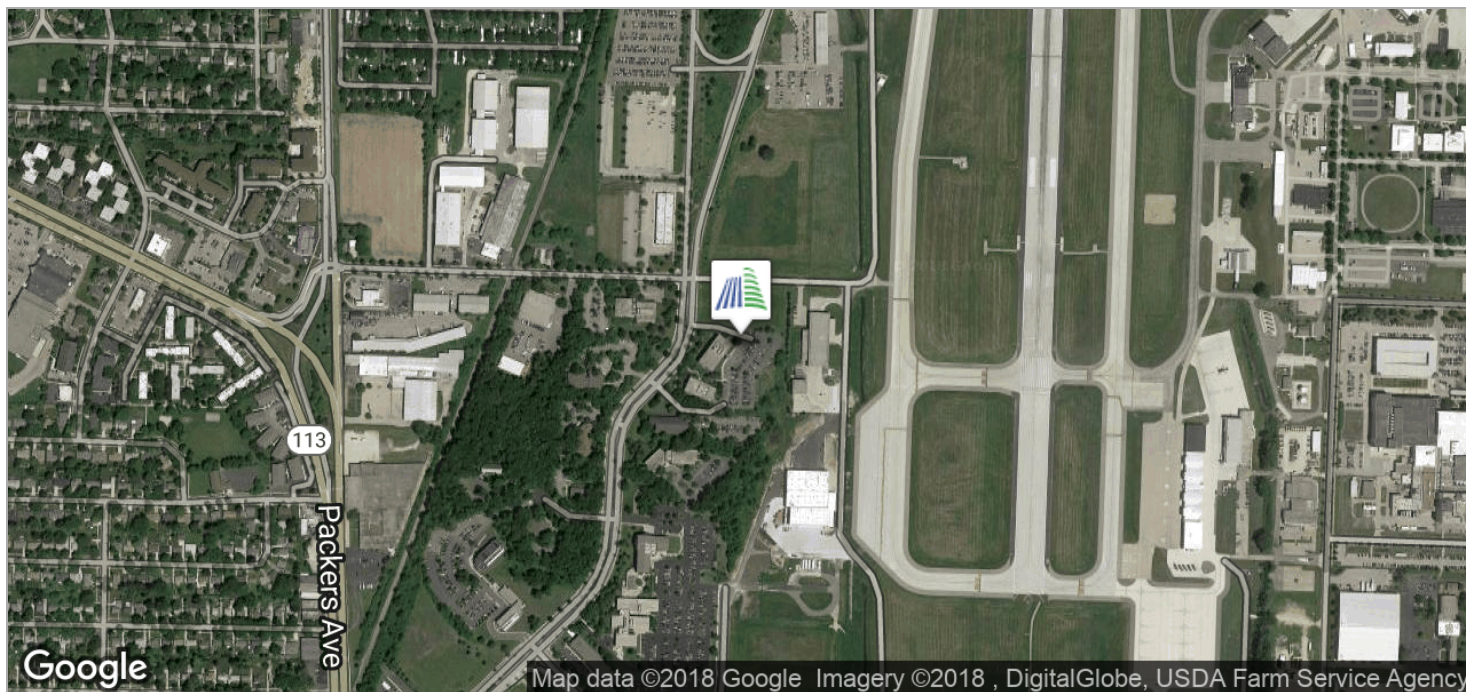
// FLOOR PLANS



OFFICE BUILDING NEAR AIRPORT

2917 INTERNATIONAL LANE, MADISON, WI

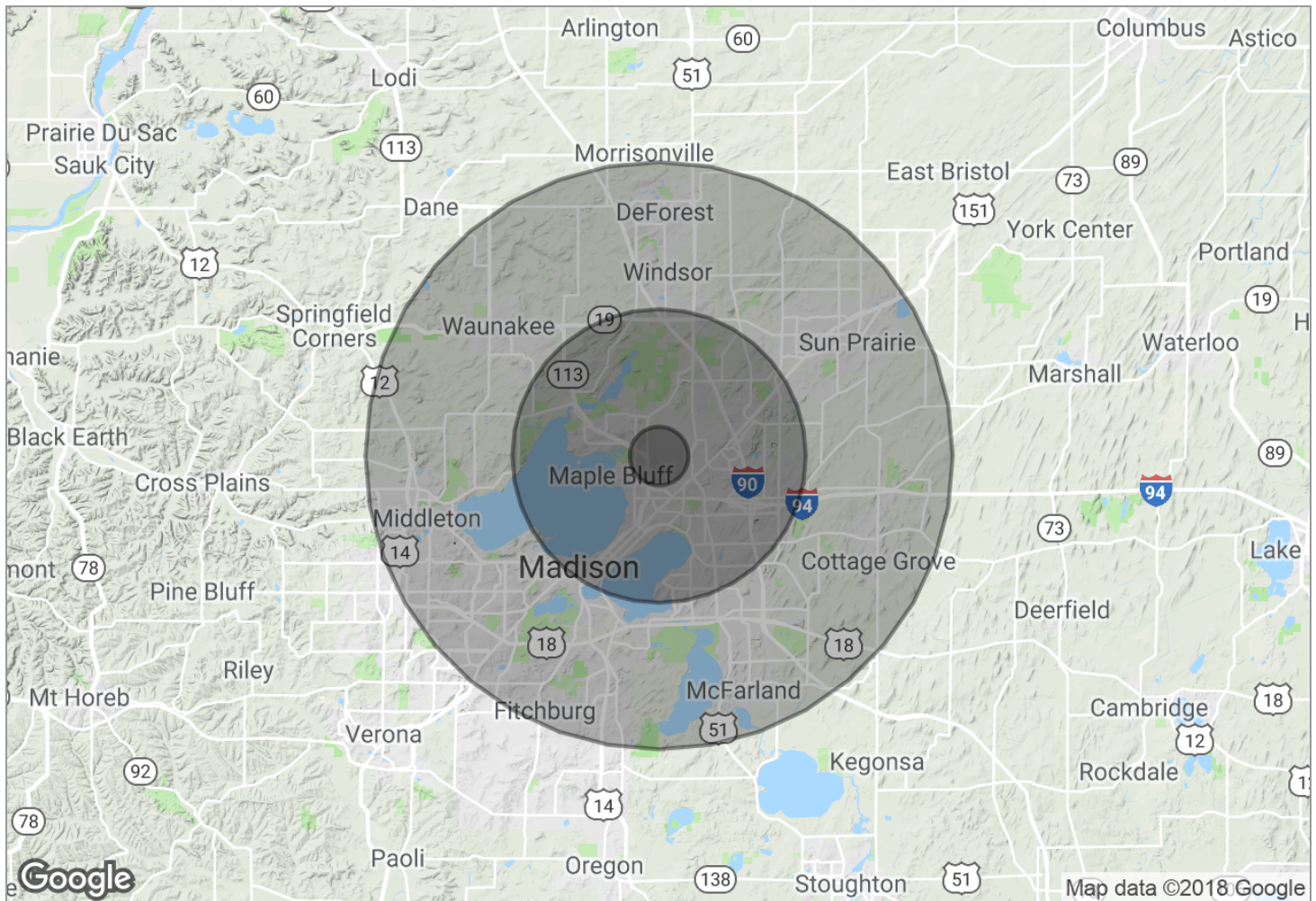
// LOCATION MAPS



OFFICE BUILDING NEAR AIRPORT

2917 INTERNATIONAL LANE, MADISON, WI

// DEMOGRAPHICS MAP



POPULATION	1 MILE	5 MILES	10 MILES
TOTAL POPULATION	3,812	130,264	350,786
MEDIAN AGE	39.1	34.9	34.0
MEDIAN AGE (MALE)	34.8	33.6	33.2
MEDIAN AGE (FEMALE)	41.8	36.0	34.8
HOUSEHOLDS & INCOME	1 MILE	5 MILES	10 MILES
TOTAL HOUSEHOLDS	1,879	59,314	146,965
# OF PERSONS PER HH	2.0	2.2	2.4
AVERAGE HH INCOME	\$47,071	\$60,486	\$68,824
AVERAGE HOUSE VALUE	\$123,378	\$229,130	\$265,634

OFFICE BUILDING NEAR AIRPORT

2917 INTERNATIONAL LANE, MADISON, WI

BROKER DISCLOSURE

WISCONSIN REALTORS® ASSOCIATION

4801 Forest Run Road
Madison, Wisconsin 53704

Altus Comm R/E Inc

BROKER DISCLOSURE TO NON-RESIDENTIAL CUSTOMERS

1 Prior to negotiating on your behalf the Broker must provide you the following disclosure statement:

2 **BROKER DISCLOSURE TO CUSTOMERS**3 You are a customer of the broker. The broker is either an agent of another party in the transaction or a subagent of another broker
4 who is the agent of another party in the transaction. The broker, or a salesperson acting on behalf of the broker, may provide
5 brokerage services to you. Whenever the broker is providing brokerage services to you, the broker owes you, the customer, the
6 following duties:

7 ■ The duty to provide brokerage services to you fairly and honestly.

8 ■ The duty to exercise reasonable skill and care in providing brokerage services to you.

9 ■ The duty to provide you with accurate information about market conditions within a reasonable time if you request it, unless
10 disclosure of the information is prohibited by law.11 ■ The duty to disclose to you in writing certain material adverse facts about a property, unless disclosure of the information is
12 prohibited by law (**See Lines 47-55**).13 ■ The duty to protect your confidentiality. Unless the law requires it, the broker will not disclose your confidential information or the
14 confidential information of other parties (**See Lines 22-39**).

15 ■ The duty to safeguard trust funds and other property the broker holds.

16 ■ The duty, when negotiating, to present contract proposals in an objective and unbiased manner and disclose the advantages and
17 disadvantages of the proposals.18 Please review this information carefully. A broker or salesperson can answer your questions about brokerage services, but if you
19 need legal advice, tax advice, or a professional home inspection, contact an attorney, tax advisor, or home inspector.20 This disclosure is required by section 452.135 of the Wisconsin statutes and is for information only. It is a plain-language summary of
21 a broker's duties to a customer under section 452.133 (1) of the Wisconsin statutes.22 **CONFIDENTIALITY NOTICE TO CUSTOMERS**23 BROKER WILL KEEP CONFIDENTIAL ANY INFORMATION GIVEN TO BROKER IN CONFIDENCE, OR ANY INFORMATION
24 OBTAINED BY BROKER THAT HE OR SHE KNOWS A REASONABLE PERSON WOULD WANT TO BE KEPT CONFIDENTIAL,
25 UNLESS THE INFORMATION MUST BE DISCLOSED BY LAW OR YOU AUTHORIZE THE BROKER TO DISCLOSE PARTICULAR
26 INFORMATION. A BROKER SHALL CONTINUE TO KEEP THE INFORMATION CONFIDENTIAL AFTER BROKER IS NO LONGER
27 PROVIDING BROKERAGE SERVICES TO YOU.

28 THE FOLLOWING INFORMATION IS REQUIRED TO BE DISCLOSED BY LAW:

29 1. MATERIAL ADVERSE FACTS, AS DEFINED IN SECTION 452.01 (5g) OF THE WISCONSIN STATUTES (**SEE LINES 47-55**).30 2. ANY FACTS KNOWN BY THE BROKER THAT CONTRADICT ANY INFORMATION INCLUDED IN A WRITTEN INSPECTION
31 REPORT ON THE PROPERTY OR REAL ESTATE THAT IS THE SUBJECT OF THE TRANSACTION.32 TO ENSURE THAT THE BROKER IS AWARE OF WHAT SPECIFIC INFORMATION YOU CONSIDER CONFIDENTIAL, YOU MAY LIST
33 THAT INFORMATION BELOW (**SEE LINES 35-36**). AT A LATER TIME, YOU MAY ALSO PROVIDE THE BROKER WITH OTHER
34 INFORMATION YOU CONSIDER TO BE CONFIDENTIAL.35 **CONFIDENTIAL INFORMATION:** _____36
37 **NON-CONFIDENTIAL INFORMATION** (The following information may be disclosed by Broker): _____38
39 *(INSERT INFORMATION YOU AUTHORIZE THE BROKER TO DISCLOSE SUCH AS FINANCIAL QUALIFICATION INFORMATION.)*40 **CONSENT TO TELEPHONE SOLICITATION**41 I/We agree that the Broker and any affiliated settlement service providers (for example, a mortgage company or title company) may
42 call our/my home or cell phone numbers regarding issues, goods and services related to the real estate transaction until I/we
43 withdraw this consent in writing. **List Home/Cell Numbers:** _____44 **SEX OFFENDER REGISTRY**45 Notice: You may obtain information about the sex offender registry and persons registered with the registry by contacting the
46 Wisconsin Department of Corrections on the Internet at: <http://offender.doc.state.wi.us/public/> or by phone at 608-240-5830.47 **DEFINITION OF MATERIAL ADVERSE FACTS**48 A "material adverse fact" is defined in Wis. Stat. § 452.01(5g) as an adverse fact that a party indicates is of such significance, or that
49 is generally recognized by a competent licensee as being of such significance to a reasonable party, that it affects or would affect
50 the party's decision to enter into a contract or agreement concerning a transaction or affects or would affect the party's decision
51 about the terms of such a contract or agreement. An "adverse fact" is defined in Wis. Stat. § 452.01(1e) as a condition or occurrence
52 that a competent licensee generally recognizes will significantly and adversely affect the value of the property, significantly reduce
53 the structural integrity of improvements to real estate, or present a significant health risk to occupants of the property; or information
54 that indicates that a party to a transaction is not able to or does not intend to meet his or her obligations under a contract or
55 agreement made concerning the transaction.

No representation is made as to the legal validity of any provision or the adequacy of any provision in any specific transaction.

Copyright 2007 by Wisconsin REALTORS® Association

Altus Comm R/E Inc, 6527 Normandy Ln, Ste 201 Madison, WI 53719
Jeff JansenProduced with ZipForm® by zipLogix 18070 Fifteen Mile Road, Fraser, Michigan 48026 www.zipLogix.com

Phone: 608-338-0055

Fax: 608-821-1402

Cancellation

Drafted by Attorney Debra Peterson Conrad

FOR MORE INFORMATION CONTACT:

CHUCK POLENZ Sr. Broker

chuck.polenz@altuscre.com (P) 608.338.0536 (C) 608.345.2042